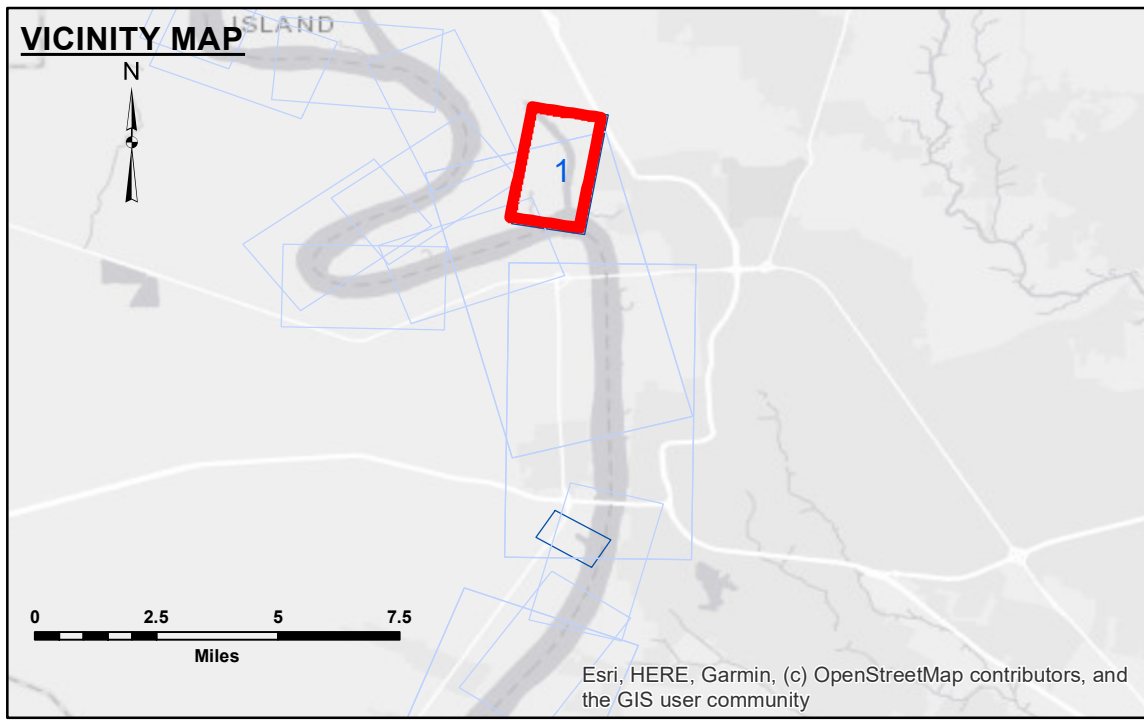


TABLE OF COORDINATES

POINT NO.	X	Y
1	3320263.990	735657.752
2	3319967.816	738187.185
3	3320071.675	740217.209
4	3320382.865	741618.264
5	3319710.959	744354.696
6	3317097.260	747457.144

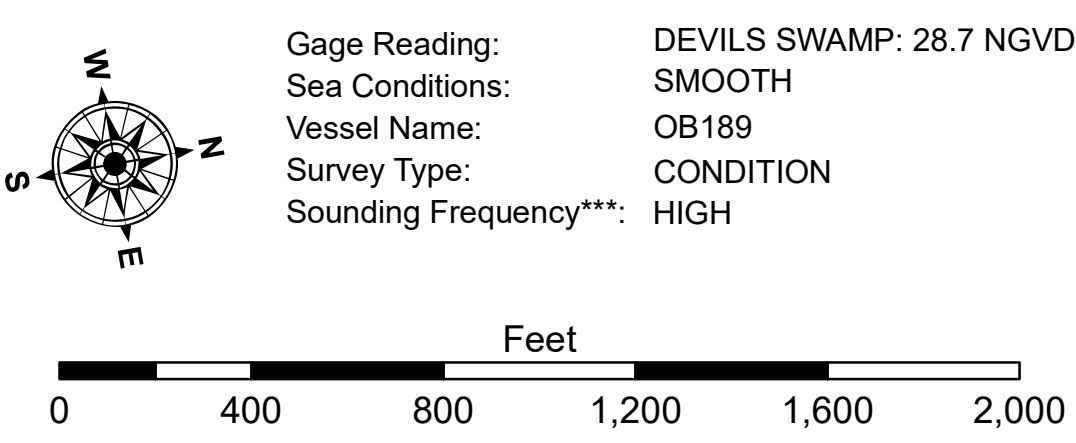
CURVE #1 DATA
 $\Delta = 19^\circ 11' 16.58''$
 $D = 0^\circ 56' 22.44''$
 $R = 6098.1$
 $T = 1030.8$
 $L = 2042.2$
 $LC = 2032.7$

CURVE #2 DATA
 $\Delta = 52^\circ 38' 11.32''$
 $D = 1^\circ 48' 10.98''$
 $R = 3177.7$
 $T = 1571.8$
 $L = 2919.3$
 $LC = 2817.7$



LEGEND

--- Federal Navigation Channel	○ Cable Area	□ Borrow Area
— Federal Navigation Center Line	■ Placement Area	● Shoalest Sounding**
— As-built Pipeline/Cable	□ Anchorage Area	☆ Beacon, General
..... Unconfirmed Pipeline/Cable	⊗ Obstruction Point	◆ Red Navigation Buoy
— Project Depth Contour	✈ Wrecks-Submerged	◆ Green Navigation Buoy



NOTES:
 Horizontal Coordinate System: North American Datum of 1983 (NAD83), projected to the State Plane Coordinate System (SPCS), Louisiana South Zone. Distance units in U.S. Survey Feet.
 Vertical Datum: Soundings are shown in feet and indicate depths below National Geodetic Vertical Datum of 1929 (NGVD29).
 Distances on the Mississippi River, above and below Head of Passes are shown at 1 mile intervals.
 The location of navigation aids are base on and provided by the U.S. Coast Guard.
 2015 Aerial Photography data source: NAIP
 Reference is N.O.A.A. Navigation Chart No. 11370.
 ** Shoalest Sounding per Quarter per Reach.



DISCLAIMER
 The information depicted on this map represents the results of a survey conducted by the U.S. Army Corps of Engineers. It is not intended to be used for any purpose other than that for which it was prepared. The user is responsible for the accuracy, completeness, readability, usability or suitability, for any particular purpose of the information. The user is responsible for the accuracy, completeness, readability, usability or suitability, for any particular purpose of the information. The user is responsible for the accuracy, completeness, readability, usability or suitability, for any particular purpose of the information. The user is responsible for the accuracy, completeness, readability, usability or suitability, for any particular purpose of the information.

**U.S. ARMY CORPS OF ENGINEERS
 NEW ORLEANS DISTRICT**

Submitted:	Surveyed By: DJS/JDH
Recommended:	Plotted By: AO
Approved:	Checked By: AC

**BATON ROUGE HARBOR
 BATON ROUGE HARBOR
 BH_01_DEV_20190815_CS
 15 August 2019**

**Sheet Reference Number
 1 of 1**