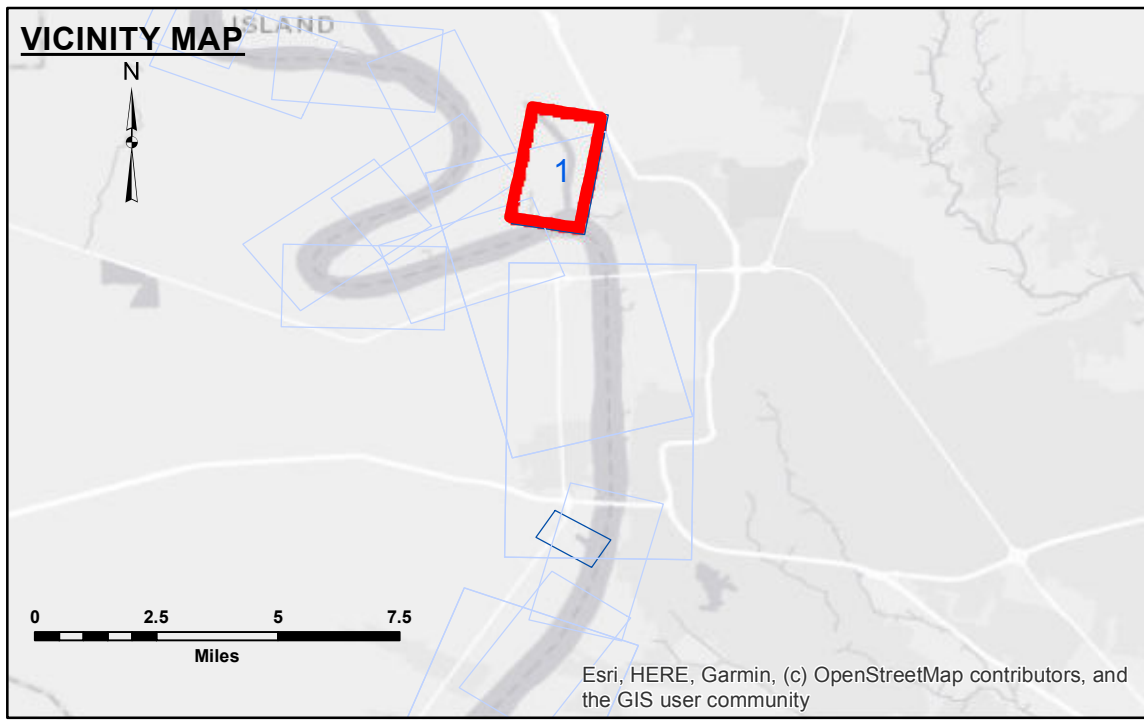


**DISCLAIMER**  
 The information depicted on this map represents the results of a survey conducted on the general condition existing at that time. It is not intended to represent the general condition existing at that time. The user is responsible for the accuracy, completeness, and reliability of the data for other than its intended purpose. The user is responsible for the accuracy, completeness, and reliability of the data for other than its intended purpose. The user is responsible for the accuracy, completeness, and reliability of the data for other than its intended purpose. The user is responsible for the accuracy, completeness, and reliability of the data for other than its intended purpose.

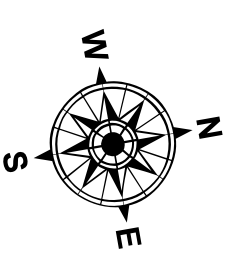
Submitted:	RYLAND/ADAMS
Recommended:	Chet, Survey Section
Approved:	Chet, Waterways Maintenance Section
Surveyed By:	RYLAND/ADAMS
Plotted By:	AO
Checked By:	AO

**BATON ROUGE HARBOR**  
**BATON ROUGE HARBOR**  
**BH\_01\_DEV\_20201120\_CS**  
**20 November 2020**

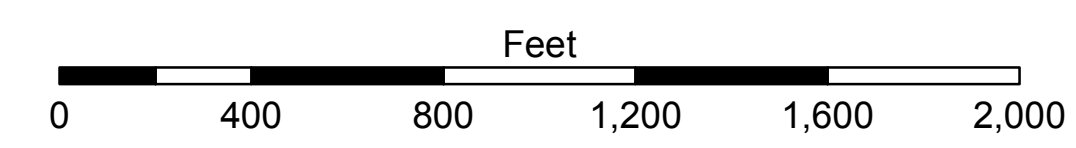


**LEGEND**

--- Federal Navigation Channel	○ Cable Area	□ Borrow Area
— Federal Navigation Center Line	□ Placement Area	● Shoalest Sounding**
— As-built Pipeline/Cable	□ Anchorage Area	☆ Beacon, General
..... Unconfirmed Pipeline/Cable	⊗ Obstruction Point	◆ Red Navigation Buoy
— Project Depth Contour	✈ Wrecks-Submerged	◆ Green Navigation Buoy



Gage Reading: RR:26.5BR:11.5 USED:13.2 NGVD  
 Sea Conditions: CALM  
 Vessel Name: M/V OB 189  
 Survey Type: CONDITION  
 Sounding Frequency\*\*\*: HIGH



**NOTES:**  
 Horizontal Coordinate System: North American Datum of 1983 (NAD83), projected to the State Plane Coordinate System (SPCS), Louisiana South Zone. Distance units in U.S. Survey Feet.  
 Vertical Datum: Soundings are shown in feet and indicate depths below National Geodetic Vertical Datum of 1929 (NGVD29).  
 Distances on the Mississippi River, above and below Head of Passes are shown at 1 mile intervals.  
 The location of navigation aids are base on and provided by the U.S. Coast Guard.  
 2015 Aerial Photography data source: NAIP  
 Reference is N.O.A.A. Navigation Chart No. 11370.  
 \*\* Shoalest Sounding per Quarter per Reach.  
 \*\*\* High frequency (200 kHz) survey data represents the first signal return at a sounding location and will include suspended solids, known as "fluff", if present. Low frequency (20 kHz) survey data normally penetrates through this "fluff" layer to depict elevations of consolidated bottom material. Low frequency accuracies may vary depending on channel conditions and fathometer settings.

**Sheet Reference Number**  
**1 of 1**  
 Revision Number: 4-1-2019/115