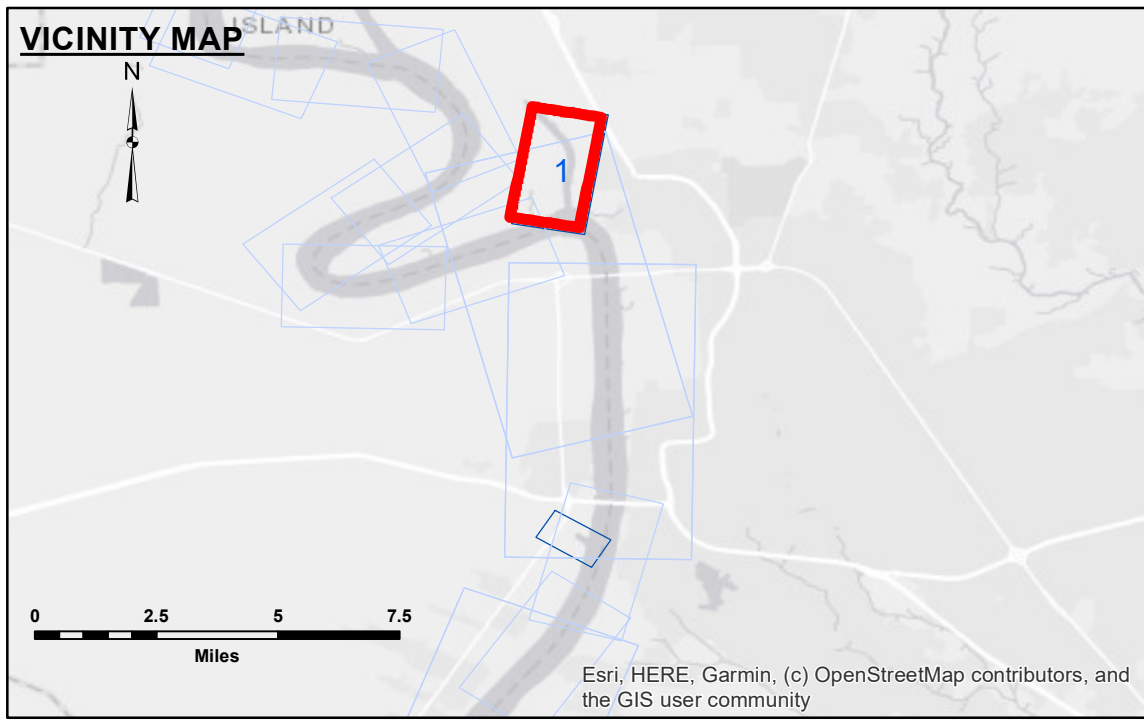
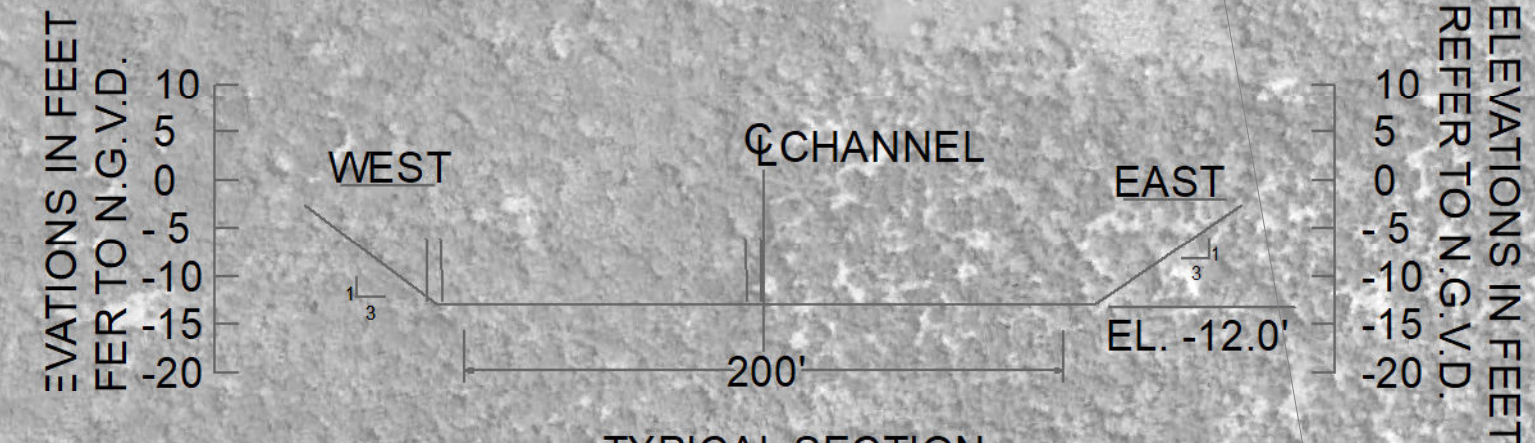


TABLE OF COORDINATES

POINT NO.	X	Y
1	3320263.990	735657.752
2	3319967.816	738187.185
3	3320071.675	740217.209
4	3320382.865	741618.264
5	3319710.959	744354.696
6	3317097.260	747457.144

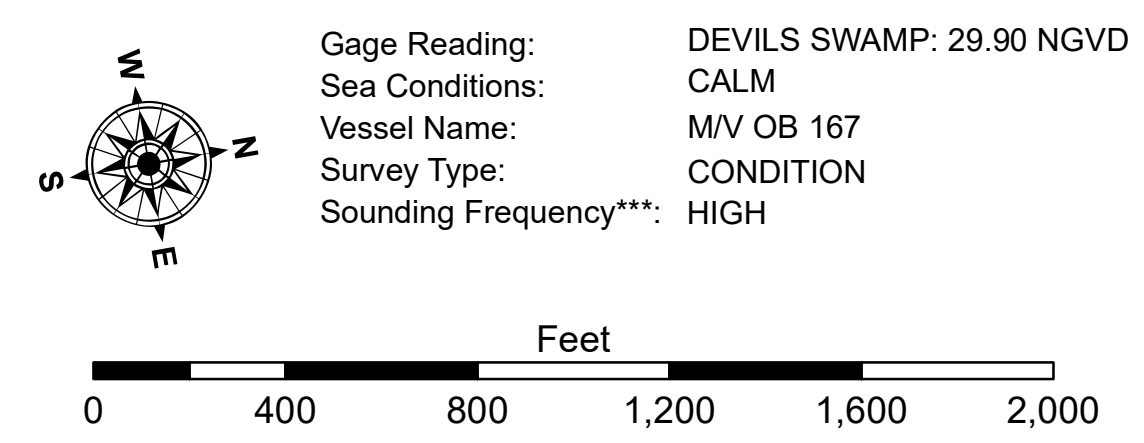
CURVE #1 DATA
 $\Delta = 19^\circ 11' 16.58''$
 $D = 0^\circ 56' 22.44''$
 $R = 6098.1$
 $T = 1030.8$
 $L = 2042.2$
 $LC = 2032.7$

CURVE #2 DATA
 $\Delta = 52^\circ 38' 11.32''$
 $D = 1^\circ 48' 10.98''$
 $R = 3177.7$
 $T = 1571.8$
 $L = 2919.3$
 $LC = 2817.7$



LEGEND

--- Federal Navigation Channel	○ Cable Area	□ Borrow Area
— Federal Navigation Center Line	□ Placement Area	● Shoalest Sounding**
— As-built Pipeline/Cable	□ Anchorage Area	☆ Beacon, General
..... Unconfirmed Pipeline/Cable	⊗ Obstruction Point	◆ Red Navigation Buoy
— Project Depth Contour	✈ Wrecks-Submerged	◆ Green Navigation Buoy
		■ -8' and above
		■ -8' to -10'
		■ -10' to -12'
		■ -12' and below



NOTES:

Horizontal Coordinate System: North American Datum of 1983 (NAD83), projected to the State Plane Coordinate System (SPCS), Louisiana South Zone. Distance units in U.S. Survey Feet.

Vertical Datum: Soundings are shown in feet and indicate depths below National Geodetic Vertical Datum of 1929 (NGVD29).

Distances on the Mississippi River, above and below Head of Passes are shown at 1 mile intervals.

The location of navigation aids are base on and provided by the U.S. Coast Guard.

2015 Aerial Photography data source: NAIP

Reference is N.O.A. Navigation Chart No. 11370.

** Shoalest Sounding per Quarter per Reach.

*** High frequency (200 kHz) survey data represents the first signal return at a sounding location and will include suspended solids, known as "fluff", if present. Low frequency (20 kHz) survey data normally penetrates through this "fluff" layer to depict elevations of consolidated bottom material. Low frequency accuracies may vary depending on channel conditions and fathometer settings.



Distribution Liability: The data represents the results of data collection/processing for a specific US Army Corps of Engineers project. It is only valid for its intended use, content, time and accuracy specifications. The user is responsible for the results of any application of the data for other than its intended purpose.

Data Constants: Hydrographic survey data is subject to change rapidly due to several factors including, but not limited to, changing hydrographic conditions which develop after the date of the survey. The US Army Corps of Engineers accepts no responsibility for changes in the hydrographic conditions which develop after the date of the survey. Prudent mariners should not rely solely upon this information.

U.S. ARMY CORPS OF ENGINEERS
NEW ORLEANS DISTRICT

Submitted:	Surveyed By: RYLAND/MOLLERE
Recommended:	Plotted By: JHL
Approved:	Checked By: JHL

BATON ROUGE HARBOR
 BATON ROUGE HARBOR
 BH_01_DEV_20220607_CS
 07 June 2022

Sheet Reference Number
 1 of 1

Revision Number:
 4.2-20200420