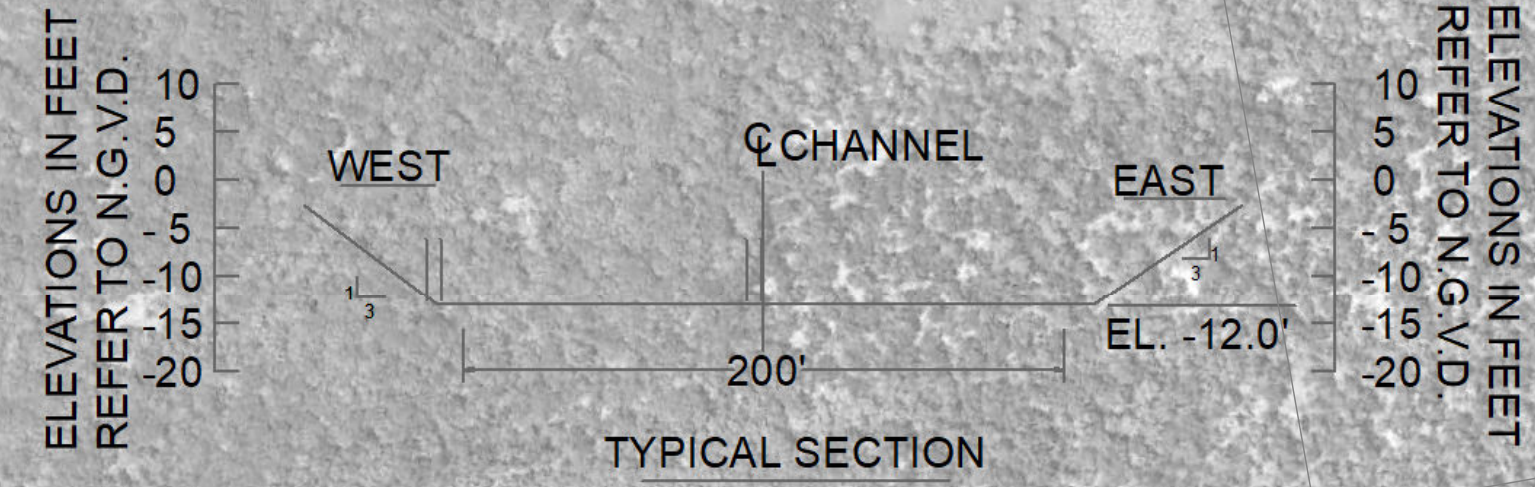


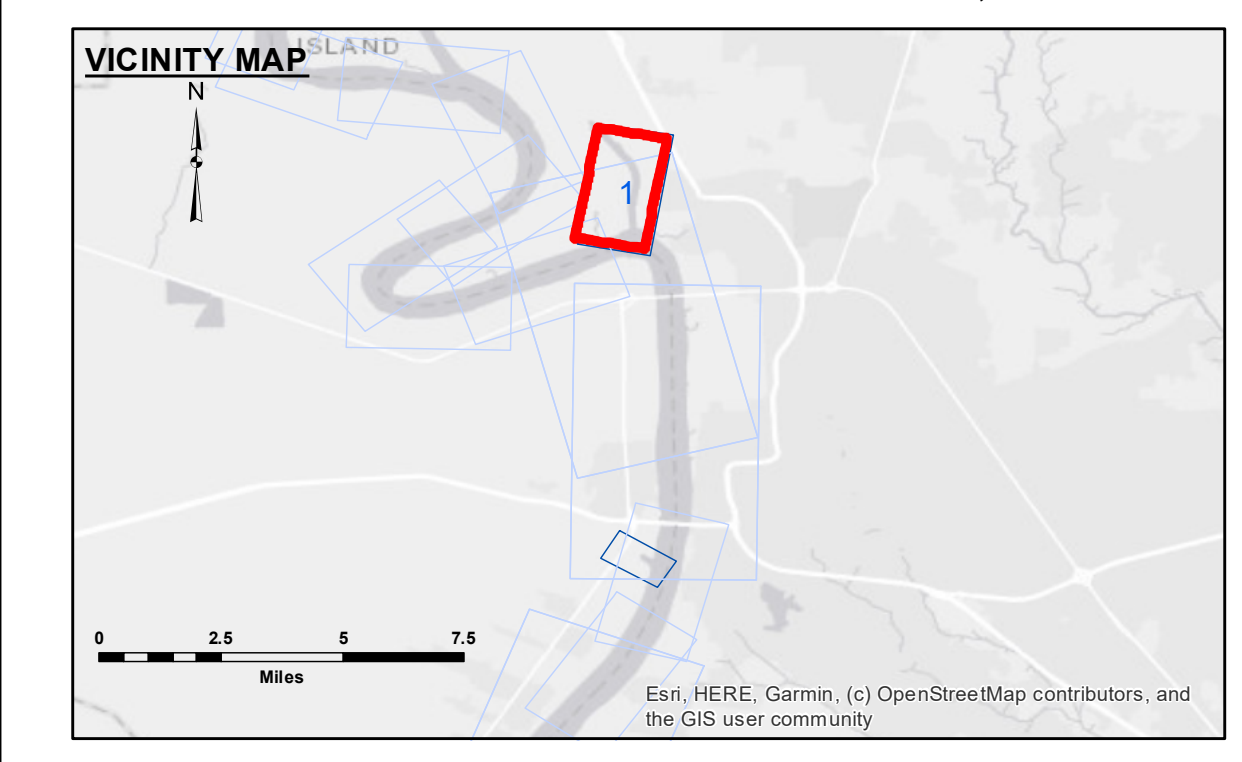
TABLE OF COORDINATES

POINT NO.	X	Y
1	3320263.990	736657.752
2	3319967.816	738187.185
3	3320071.675	740217.209
4	3320382.865	741618.264
5	3319710.959	744354.696
6	3317097.260	747457.144



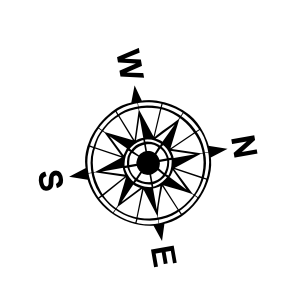
CURVE #1 DATA
 $\Delta = 19^\circ 11' 16.58''$
 $D = 0^\circ 56' 22.44''$
 $R = 6098.1$
 $T = 1030.8$
 $L = 2042.2$
 $LC = 2032.7$

CURVE #2 DATA
 $\Delta = 52^\circ 38' 11.32''$
 $D = 1^\circ 48' 10.98''$
 $R = 3177.7$
 $T = 1571.8$
 $L = 2919.3$
 $LC = 2817.7$



LEGEND

--- Federal Navigation Channel	○ Cable Area	□ Borrow Area
— Federal Navigation Center Line	▭ Placement Area	● Shoalest Sounding**
— As-built Pipeline/Cable	⊗ Anchorage Area	☆ Beacon, General
⋯ Unconfirmed Pipeline/Cable	⊗ Obstruction Point	♦ Red Navigation Buoy
— Project Depth Contour	⚓ Wrecks-Submerged	♦ Green Navigation Buoy
		■ -8' and above
		■ -8' to -10'
		■ -10' to -12'
		■ -12' and below



Gage Reading: DEVIL'S SWAMP: 11.7 NGVD
 Sea Conditions: CALM
 Vessel Name: OB-169
 Survey Type: CONDITION
 Sounding Frequency***: HIGH

Feet

0 400 800 1,200 1,600 2,000

NOTES:

Horizontal Coordinate System: North American Datum of 1983 (NAD83), projected to the State Plane Coordinate System (SPCS), Louisiana South Zone. Distance units in U.S. Survey Feet.

Vertical Datum: Soundings are shown in feet and indicate depths below National Geodetic Vertical Datum of 1929 (NGVD29).

Distances on the Mississippi River, above and below Head of Passes are shown at 1 mile intervals.

The location of navigation aids are based on and provided by the U.S. Coast Guard.

2015 Aerial Photography data source: NAIP

Reference is N.O.A.A. Navigation Chart No. 11370.

** Shoalest Sounding per Quarter per Reach.

*** High frequency (200 kHz) survey data represents the first signal return at a sounding location and will include suspended solids, known as "fluff", if present. Low frequency (20 kHz) survey data normally penetrates through this "fluff" layer to depict elevations of consolidated bottom material. Low frequency accuracies may vary depending on channel conditions and fathometer settings.



ACCESS LIMITS: The United States Government furnishes these data and the recipient accepts and uses them with the express understanding that they are for informational purposes only and are not to be used for any purpose other than that for which they were prepared. The user is responsible for the results of any use of the data. The application of the data for other than its intended purpose is prohibited. The user is responsible for the results of any use of the data. The application of the data for other than its intended purpose is prohibited.

Distribution Liability: The data represents the results of data collection processing for a specific US Army Corps of Engineers project. It is only valid for its intended use, content, time and accuracy specifications. The user is responsible for the results of any use of the data. The application of the data for other than its intended purpose is prohibited.

Data Constraints: Hydrographic survey data is subject to change due to several factors including but not limited to dredging activity, changes in channel conditions, and changes in the hydrographical conditions when developed after the date of the survey. The user is responsible for the results of any use of the data. The application of the data for other than its intended purpose is prohibited.

U.S. ARMY CORPS OF ENGINEERS
NEW ORLEANS DISTRICT

Submitted:	Surveyed By: SP-US
Recommended: Chief Survey Section	Plotted By: BD
Approved: Chief Waterways Maintenance Section	Checked By: AC

BATON ROUGE HARBOR
BATON ROUGE HARBOR
BH_01_DEV_20230613_CS
13 June 2023

Sheet Reference Number
1 of 1