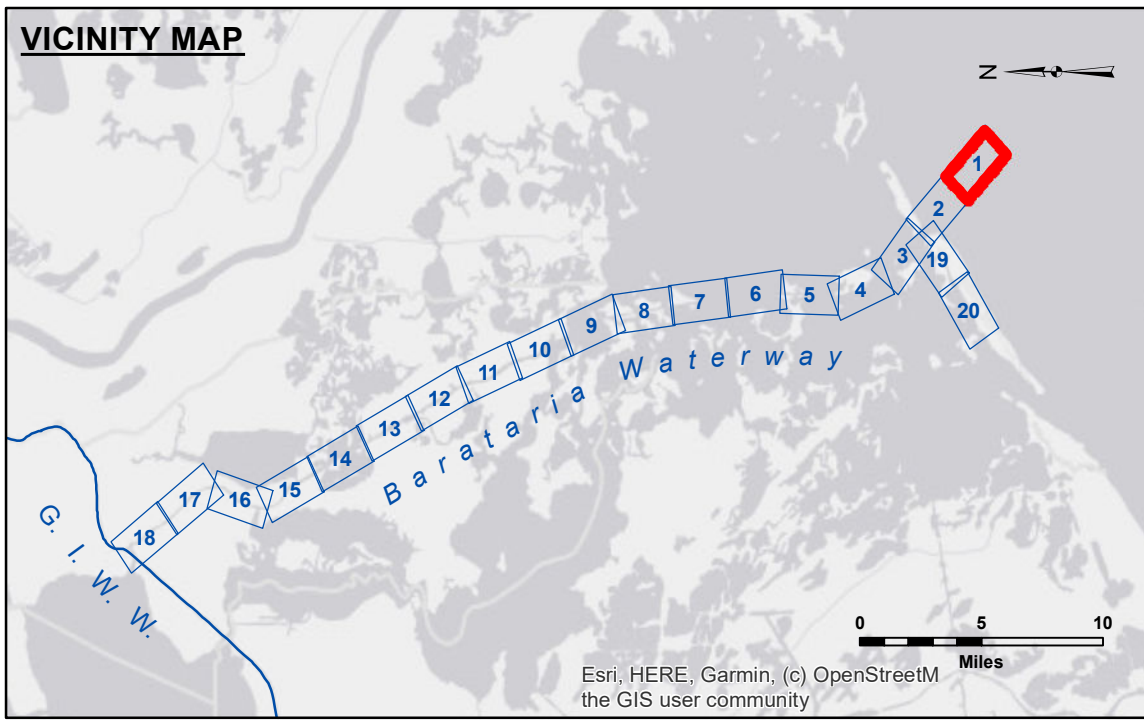


DISCLAIMER
 The United States Government furnishes these data and the recipient accepts and uses them with the express understanding that the data are not to be used for any purpose other than that for which they were originally collected, expressed, or implied concerning the accuracy, completeness, reliability, usability or suitability for any particular purpose of the recipient. The user is responsible for the results of any use of these data. The recipient agrees to indemnify and hold the United States Government harmless from and against all claims, damages, losses, and expenses, including reasonable attorney's fees, that may be asserted against the United States Government by any third party as a result of the use of these data. The recipient may not transfer these data to others without obtaining the permission of the United States Government. The recipient may not use the data for any purpose other than that for which they were originally collected, expressed, or implied. The recipient may not use the data to represent the general condition existing at that time.

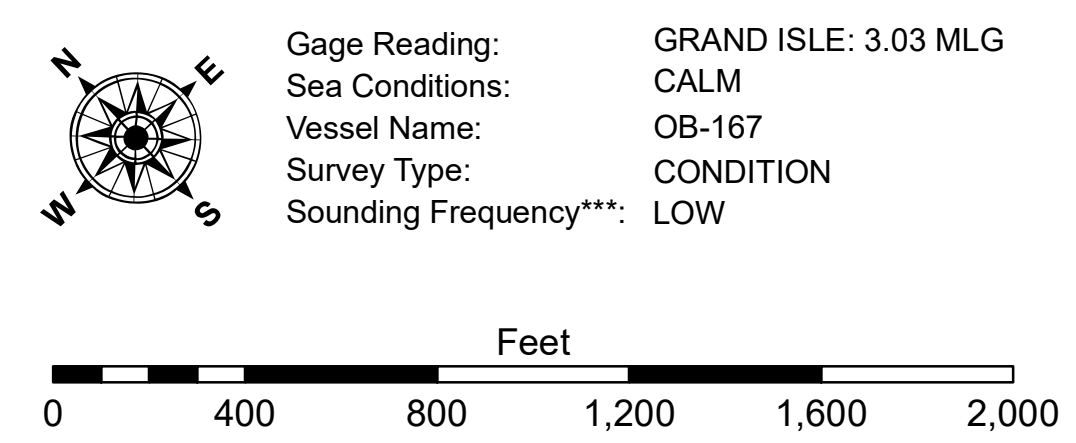
U.S. ARMY CORPS OF ENGINEERS NEW ORLEANS DISTRICT		
Submitted:	Surveyed By: SPPM	Plotted By: AO
Recommended:	Checked By: AO	Checked By: AO
Approved:	Chief, Waterways Maintenance Section	

**BARATARIA WATERWAY
 BAR CHANNEL
 BW_01_BAR_20200930_CS
 30 September 2020**



LEGEND

--- Federal Navigation Channel	○ Cable Area	□ Borrow Area	■ -8' and above
— Federal Navigation Center Line	□ Placement Area	● Shoalest Sounding**	■ -8' to -12'
— As-built Pipeline/Cable	□ Anchorage Area	★ Beacon, General	■ -12' to -15'
..... Unconfirmed Pipeline/Cable	⊗ Obstruction Point	◆ Red Navigation Buoy	■ -15' and below
— Project Depth Contour	⚓ Wrecks-Submerged	◆ Green Navigation Buoy	



NOTES:
 Horizontal Coordinate System: North American Datum of 1983 (NAD83), projected to the State Plane Coordinate System (SPCS), Louisiana South Zone. Distance units in U.S. Survey Feet.
 Vertical Datum: Soundings are shown in feet and indicate depths below Mean Low Gulf Datum (MLG).
 Distances on the Barataria Waterway are shown at 1 mile intervals.
 The location of navigation aids are based on and provided by the U.S. Coast Guard and USACE survey crews.
 2015 Aerial Photography data source: NAIP
 Reference is N.O.A.A. Navigation Chart No. 11365.
 ** Shoalest Sounding per Quarter per Reach.
 *** High frequency (200 kHz) survey data represents the first signal return at a sounding location and will include suspended solids, known as "fluff", if present. Low frequency (20 kHz) survey data normally penetrates through this "fluff" layer to depict elevations of consolidated bottom material. Low frequency accuracies may vary depending on channel conditions and fathometer settings.

**Sheet Reference Number
 1 of 20**