



US Army Corps of Engineers District: CEMVN

DISCLAIMER
 The United States Government furnishes these data and the recipient accepts and uses them with the express understanding that the data are not to be used for any purpose other than that for which they were originally collected, and that the data are not to be used for any purpose other than that for which they were originally collected. The user is responsible for the results of any use of the data for other than its intended purpose. The information depicted on this map represents the results of a survey conducted under the authority of the U.S. Army Corps of Engineers. The information is not to be used for any purpose other than that for which it was originally collected. The user is responsible for the results of any use of the data for other than its intended purpose. The information depicted on this map represents the results of a survey conducted under the authority of the U.S. Army Corps of Engineers. The information is not to be used for any purpose other than that for which it was originally collected. The user is responsible for the results of any use of the data for other than its intended purpose.

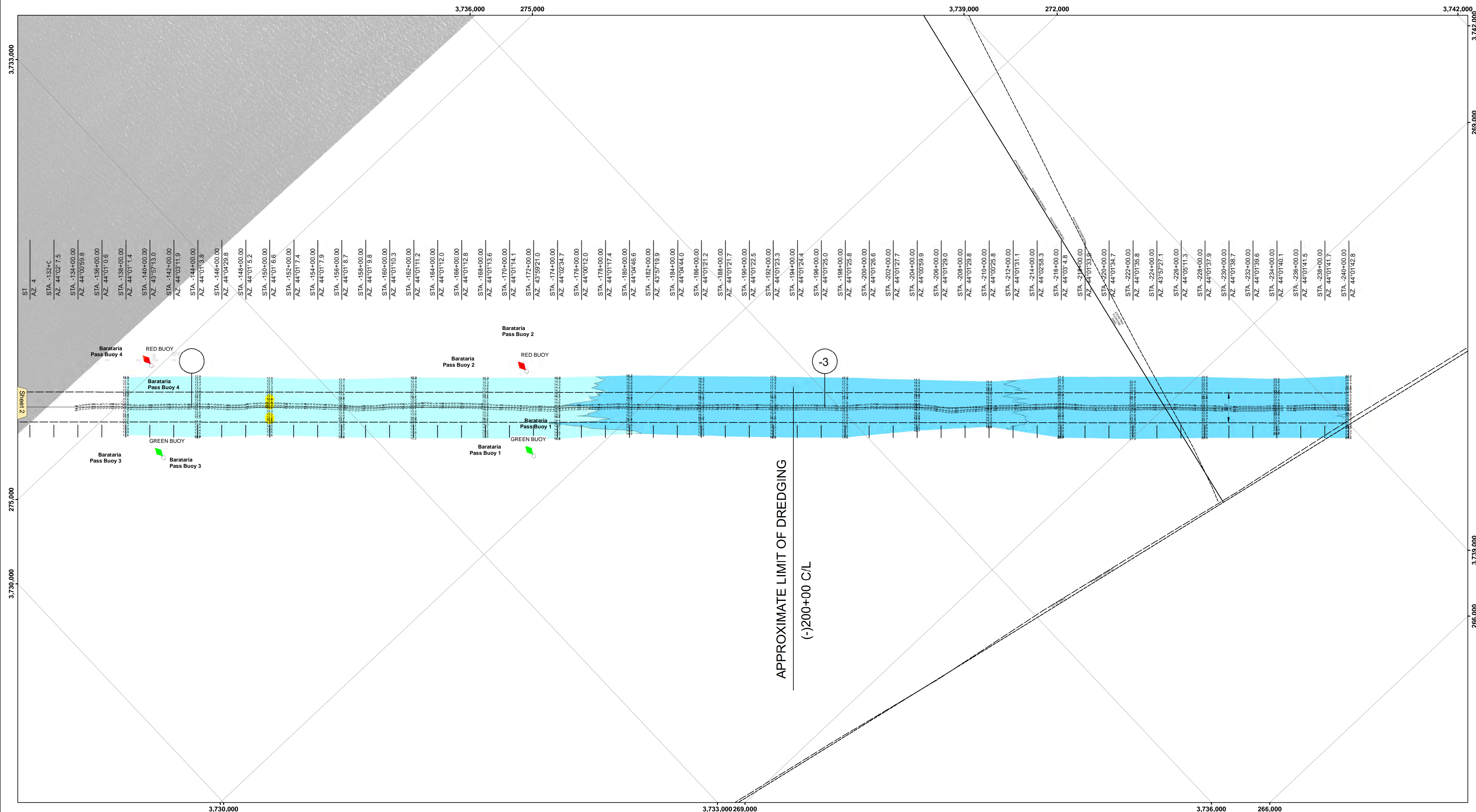
Submitted:	Surveyed By: RYLAND/MOLLERE
Recommended:	Plotted By: BD
Approved:	Checked By: AD/JH

U.S. ARMY CORPS OF ENGINEERS
NEW ORLEANS DISTRICT

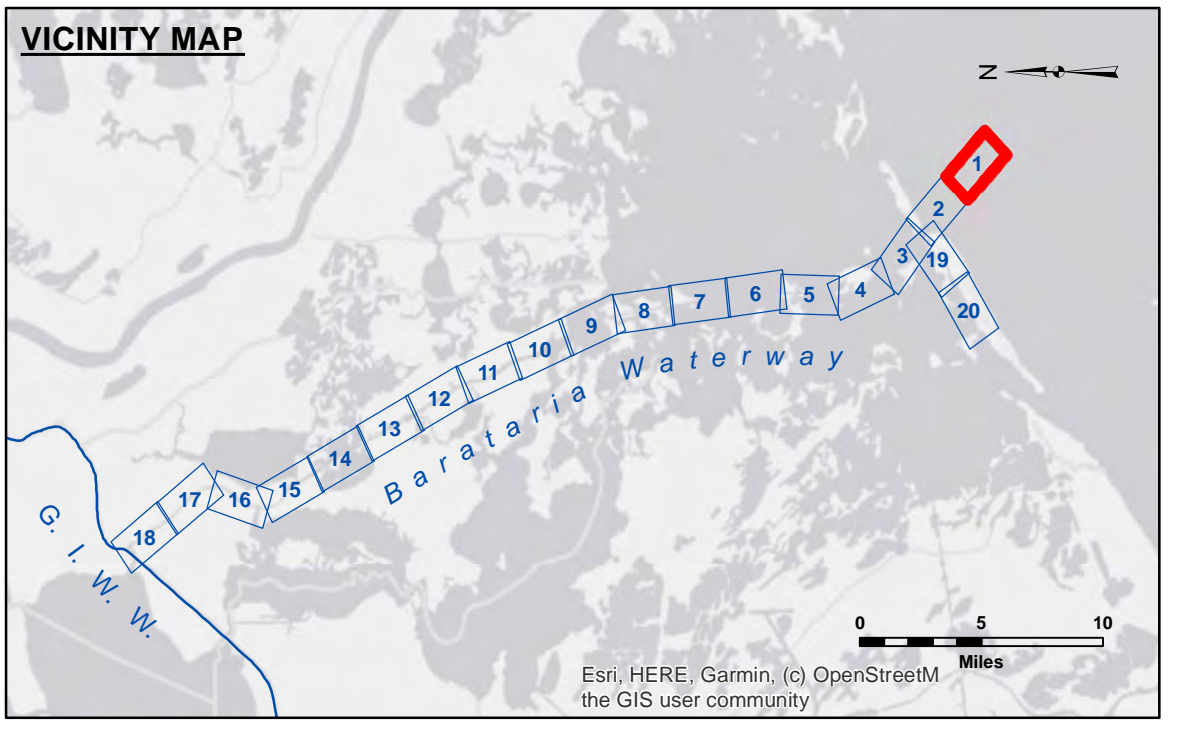
**BARATARIA WATERWAY
BAR CHANNEL
BW_01_BAR_20240501_AD
01 May 2024**

**Sheet Reference Number
1 of 20**

Revision Number:
4.2-3020M(2)

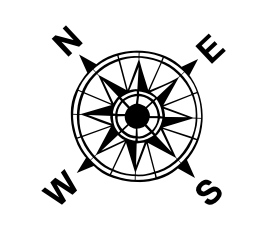


APPROXIMATE LIMIT OF DREDGING
(-200+00 C/I)

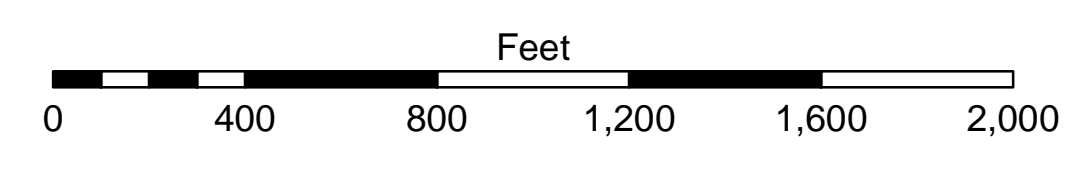


LEGEND

--- Federal Navigation Channel	○ Cable Area	□ Borrow Area	■ -8' and above
— Federal Navigation Center Line	□ Placement Area	● Shoalest Sounding**	■ -8' to -12'
— As-built Pipeline/Cable	□ Anchorage Area	★ Beacon, General	■ -12' to -15'
..... Unconfirmed Pipeline/Cable	⊗ Obstruction Point	♦ Red Navigation Buoy	■ -15' and below
— Project Depth Contour	⚓ Wrecks-Submerged	♦ Green Navigation Buoy	



Gage Reading: GRAND ISLE RTK: 3.32 MLG AVG.
 Sea Conditions: CALM
 Vessel Name: DUCARPE
 Survey Type: CS
 Sounding Frequency***: LOW



NOTES:
 Horizontal Coordinate System: North American Datum of 1983 (NAD83), projected to the State Plane Coordinate System (SPCS), Louisiana South Zone. Distance units in U.S. Survey Feet.
 Vertical Datum: Soundings are shown in feet and indicate depths below Mean Low Gulf Datum (MLG).
 Distances on the Barataria Waterway are shown at 1 mile intervals.
 The location of navigation aids are based on and provided by the U.S. Coast Guard and USACE survey crews.
 2015 Aerial Photography data source: NAIP
 Reference is N.O.A.A. Navigation Chart No. 11365.
 ** Shoalest Sounding per Quarter per Reach.
 *** High frequency (200 kHz) survey data represents the first signal return at a sounding location and will include suspended solids, known as "fluff", if present. Low frequency (20 kHz) survey data normally penetrates through this "fluff" layer to depict elevations of consolidated bottom material. Low frequency accuracies may vary depending on channel conditions and fathometer settings.