

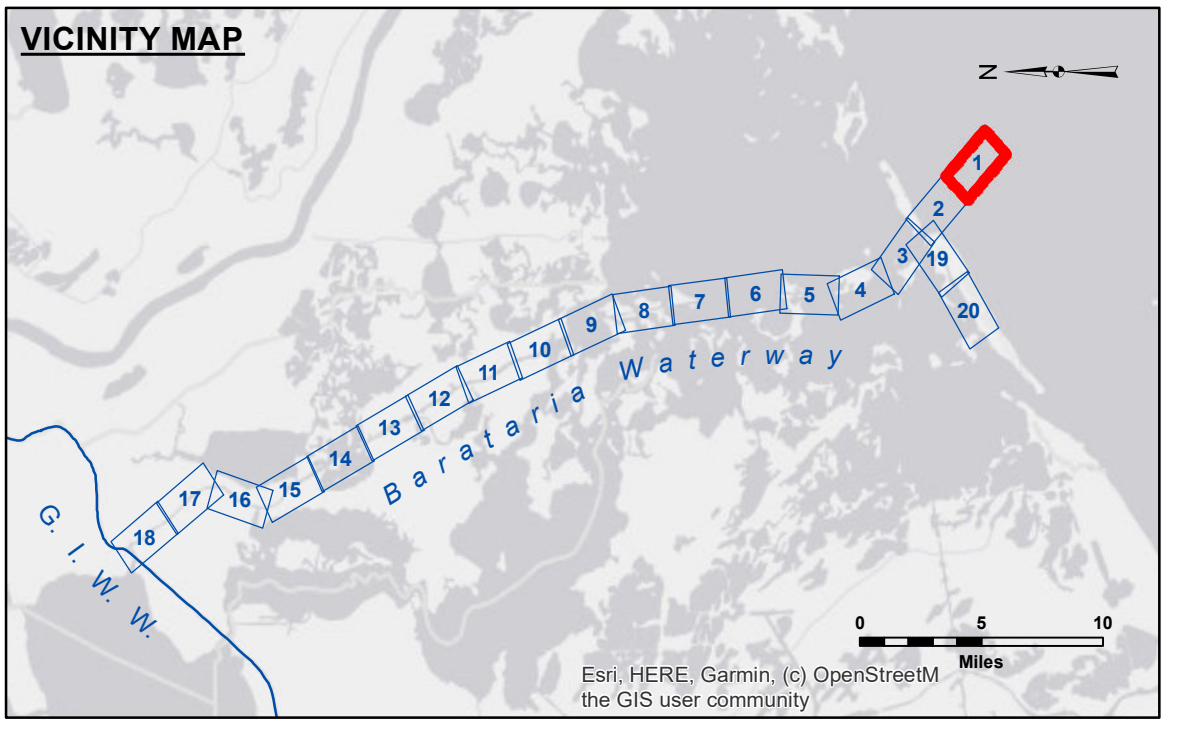
DISCLAIMER
 The United States Government furnishes these data and the recipient accepts and uses them with the express understanding that the data are not intended for any purpose other than that for which they were prepared, or implied concerning the accuracy, completeness, reliability, usability or suitability for any particular purpose of the recipient. The user is responsible for the results obtained from the use of these data. The recipient may not transfer these data to others without also transferring this disclaimer. The information depicted on the map represents the results of a survey and is not intended to be used for any purpose other than that for which it was prepared. The recipient may not transfer these data to others without also transferring this disclaimer. The information depicted on the map represents the results of a survey and is not intended to be used for any purpose other than that for which it was prepared. The recipient may not transfer these data to others without also transferring this disclaimer. The information depicted on the map represents the results of a survey and is not intended to be used for any purpose other than that for which it was prepared. The recipient may not transfer these data to others without also transferring this disclaimer.

U.S. ARMY CORPS OF ENGINEERS NEW ORLEANS DISTRICT		
Submitted:	Surveyed By: PM,LT	Plotted By: BD
Recommended:	Chief, Survey Section	Checked By: ADJ/H
Approved:	Chief, Waterways Maintenance Section	

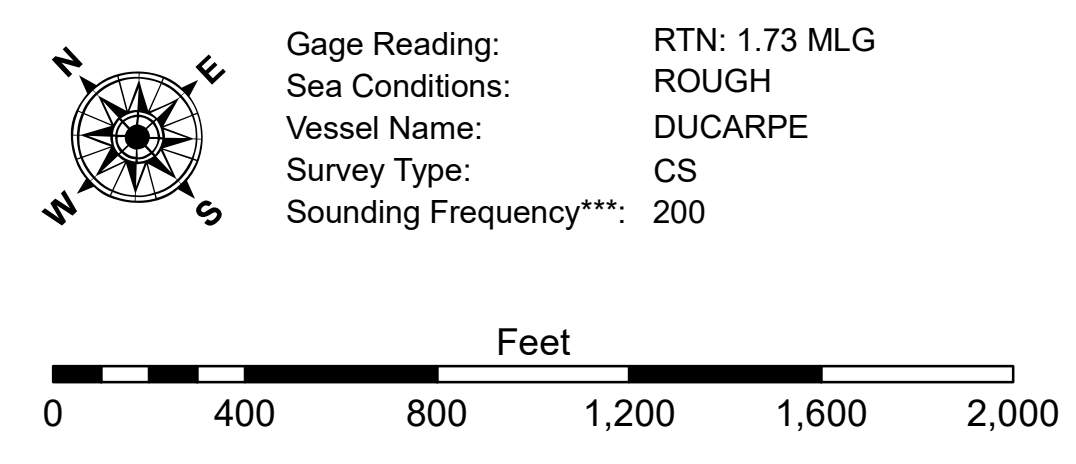
**BARATARIA WATERWAY
 BAR CHANNEL
 BW_01_BAR_20241022_CS
 22 October 2024**

**Sheet
 Reference
 Number
 1 of 20**

Revision Number:
4.2-20240420



LEGEND			
--- Federal Navigation Channel	○ Cable Area	□ Borrow Area	■ -8' and above
— Federal Navigation Center Line	■ Placement Area	● Shoalest Sounding**	■ -8' to -12'
— As-built Pipeline/Cable	□ Anchorage Area	★ Beacon, General	■ -12' to -15'
..... Unconfirmed Pipeline/Cable	⊗ Obstruction Point	♦ Red Navigation Buoy	■ -15' and below
— Project Depth Contour	⚓ Wrecks-Submerged	♦ Green Navigation Buoy	



NOTES:
 Horizontal Coordinate System:
 North American Datum of 1983 (NAD83), projected to the State Plane Coordinate System (SPCS), Louisiana South Zone. Distance units in U.S. Survey Feet.
 Vertical Datum:
 Soundings are shown in feet and indicate depths below Mean Low Gulf Datum (MLG).
 Distances on the Barataria Waterway are shown at 1 mile intervals.
 The location of navigation aids are based on and provided by the U.S. Coast Guard and USACE survey crews.
 2015 Aerial Photography data source: NAIP
 Reference is N.O.A.A. Navigation Chart No. 11365.
 ** Shoalest Sounding per Quarter per Reach.
 *** High frequency (200 kHz) survey data represents the first signal return at a sounding location and will include suspended solids, known as "fluff", if present. Low frequency (20 kHz) survey data normally penetrates through this "fluff" layer to depict elevations of consolidated bottom material. Low frequency accuracies may vary depending on channel conditions and fathometer settings.