

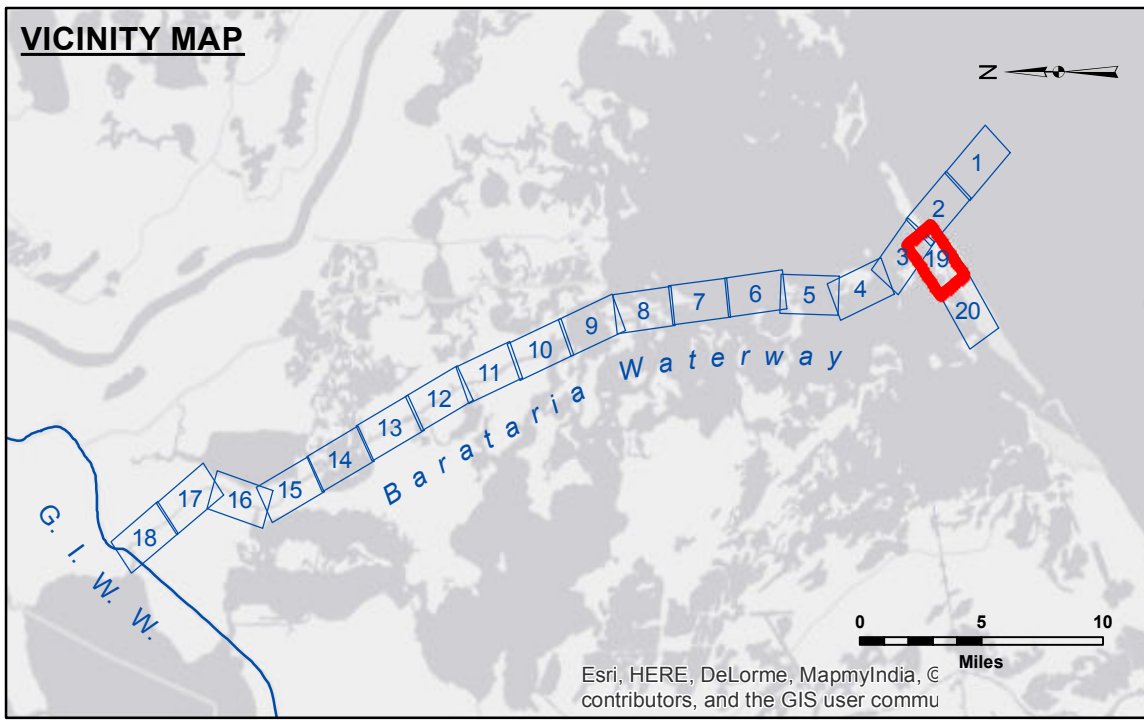
Access/Use: The United States Government furnishes these data and the recipient accepts and uses them with the express understanding that the data are not to be used for any purpose other than that for which they were originally collected, expressed, or implied concerning the accuracy, completeness, reliability, usability, or suitability for any particular purpose of the recipient. The user is responsible for the results of any use of the data for other than its intended purpose.

Distribution Liability: The data represents the results of data collection/processing for a specific US Army Corps of Engineers project. It is only valid for its intended use, content, time and accuracy specifications. The user is responsible for the results of any use of the data for other than its intended purpose.

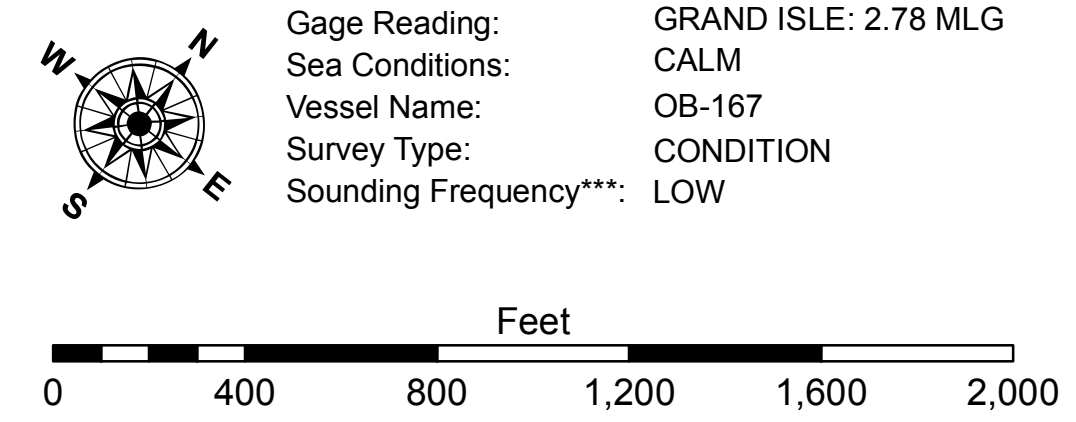
Data Constraints: Hydrographic survey data is subject to change rapidly due to several factors including but not limited to dredging, accretion, and other changes in the bathymetry of the waterway. The user is responsible for the hydrographic conditions which develop after the date of the data collection. The user is not to be held responsible for changes in the hydrographic conditions which develop after the date of the data collection. The user is not to be held responsible for changes in the hydrographic conditions which develop after the date of the data collection. The user is not to be held responsible for changes in the hydrographic conditions which develop after the date of the data collection.

U.S. ARMY CORPS OF ENGINEERS NEW ORLEANS DISTRICT		
Submitted:	Surveyed By: PM/SPS	Checked By: AC
Recommended:	Plotted By: BD	
Approved:	Chart, Survey Section	
	Chart, Waterways Maintenance Section	

**BARATARIA WATERWAY
BAYOU RIGAUD
BW_19_RIG_20170905_CS_POSTSTORM
05 September 2017**



LEGEND			
--- Federal Navigation Channel	○ Cable Area	□ Borrow Area	■ -8' and above
— Federal Navigation Center Line	□ Placement Area	● Shoalest Sounding**	■ -8' to -12'
— As-built Pipeline/Cable	□ Anchorage Area	★ Beacon, General	■ -12' to -15'
..... Unconfirmed Pipeline/Cable	⊗ Obstruction Point	◆ Red Navigation Buoy	■ -15' and below
— Project Depth Contour	✈ Wrecks-Submerged	◆ Green Navigation Buoy	



NOTES:
 Horizontal Coordinate System:
 North American Datum of 1983 (NAD83), projected to the State Plane Coordinate System (SPCS), Louisiana South Zone. Distance units in U.S. Survey Feet.
 Vertical Datum:
 Soundings are shown in feet and indicate depths below Mean Low Gulf Datum (MLG). Datum Relationships for gage 69410 as of July 2014:
 0.0' NAVD83 (2009.55) = 0.08' MLLW = 1.33' MLG or 0.0' MLLW = 1.25' MLG
 Distances on the Barataria Waterway are shown at 1 mile intervals.
 The location of navigation aids are base on and provided by the U.S. Coast Guard and USACE survey crews.
 2010 Aerial Photography data source: NAIP
 Reference is N.O.A. Navigation Chart No. 11365.
 ** Shoalest Sounding per Quarter per Reach.
 *** High frequency (200 kHz) survey data represents the first signal return at a sounding location and will include suspended solids, known as "fluff", if present. Low frequency (20 kHz) survey data normally penetrates through this "fluff" layer to depict elevations of consolidated bottom material. Low frequency accuracies may vary depending on channel conditions and fathometer settings.

**Sheet Reference Number
19 of 20**

Revision Number:
3.13-2016811