

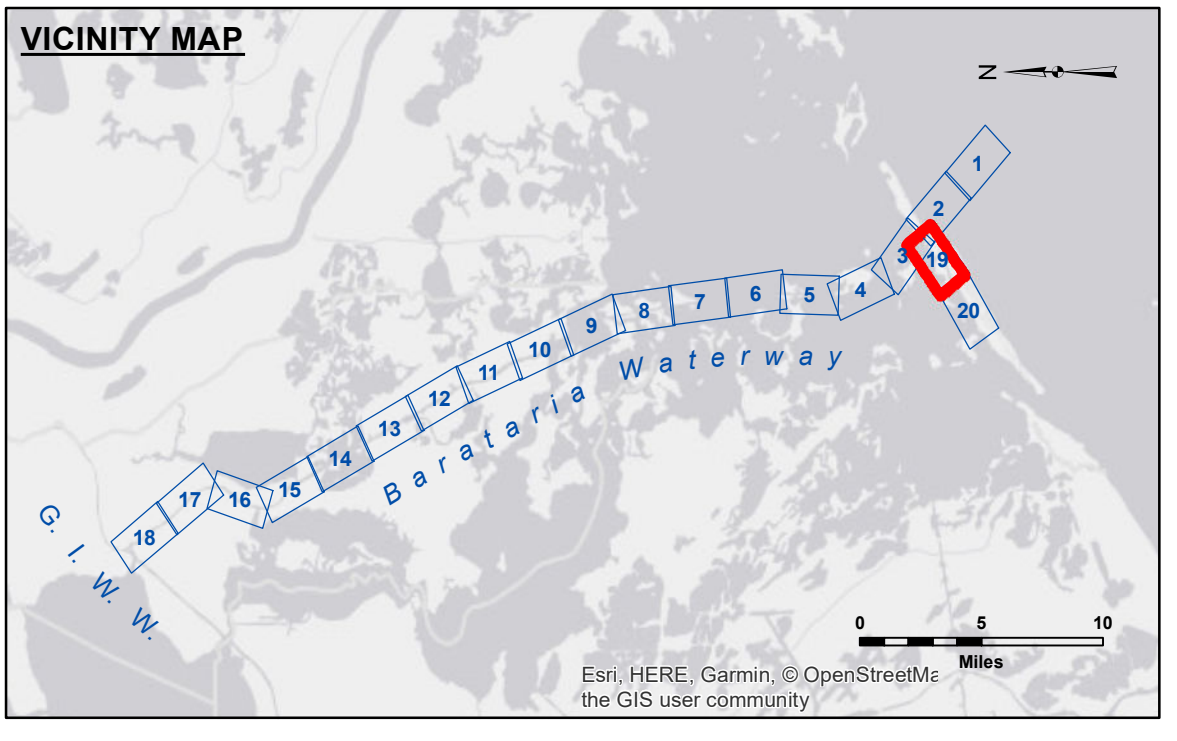
Access/Availability: The United States Government furnishes these data and the recipient accepts and uses them with the express understanding that they are not to be used for any purpose other than that for which they were prepared, and that the user is responsible for the results of their use. The user is responsible for the results of their use. The user is responsible for the results of their use. The user is responsible for the results of their use.

Distribution Liability: The data represents the results of data collection/processing for a specific US Army Corps of Engineers project. It is only valid for its intended use, content, time and accuracy specifications. The user is responsible for the results of their use. The user is responsible for the results of their use. The user is responsible for the results of their use.

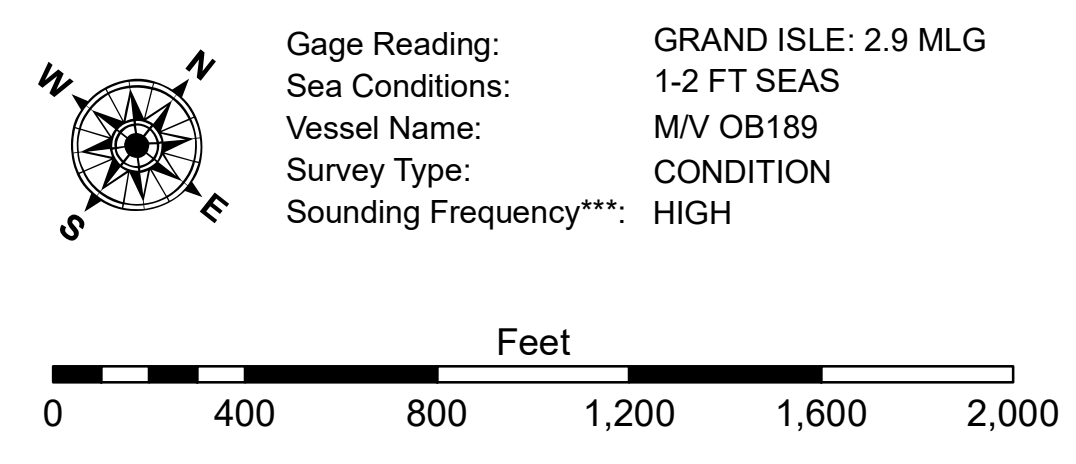
Data Constraints: Hydrographic survey data is subject to change rapidly due to several factors including but not limited to dredging, sedimentation, and changes in bathymetry. The user is responsible for the results of their use. The user is responsible for the results of their use. The user is responsible for the results of their use.

U.S. ARMY CORPS OF ENGINEERS NEW ORLEANS DISTRICT		
Submitted By:	Surveyed By:	Plotted By:
Checked By:	R. LAND/HOSHMAN	AO
Approved:	Chart, Survey Section	AO
	Chart, Waterways Maintenance Section	

**BARATARIA WATERWAY
BAYOU RIGAUD
BW_19_RIG_20180911_CS
11 September 2018**



LEGEND			
--- Federal Navigation Channel	○ Cable Area	□ Borrow Area	■ -8' and above
— Federal Navigation Center Line	□ Placement Area	● Shoalest Sounding**	■ -8' to -12'
— As-built Pipeline/Cable	□ Anchorage Area	★ Beacon, General	■ -12' to -15'
..... Unconfirmed Pipeline/Cable	⊗ Obstruction Point	◆ Red Navigation Buoy	■ -15' and below
— Project Depth Contour	⚓ Wrecks-Submerged	◆ Green Navigation Buoy	



**Sheet Reference Number
19 of 20**

Revision Number:
3.12-2016011