

**Access/Disclaimer:** The United States Government furnishes these data and the recipient accepts and uses them with the express understanding that the data are not to be used for any purpose other than that for which they were originally intended. The user is responsible for the results of any use of the data for other than the intended purpose.

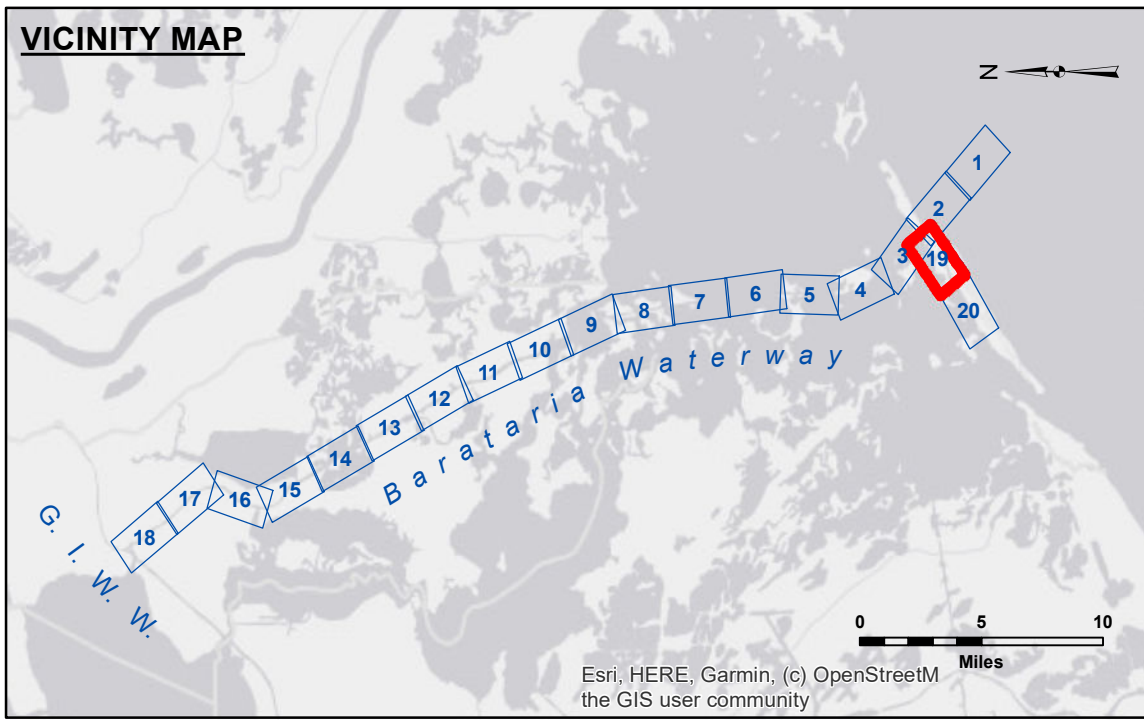
**Distribution Liability:** The data represents the results of data collection and processing for a specific US Army Corps of Engineers project. It is only valid for its intended use, content, time and accuracy specifications. The user is responsible for the results of any use of the data for other than the intended purpose.

**Data Constraints:** Hydrographic survey data is subject to change rapidly due to several factors including but not limited to dredging, sedimentation, and changes in bathymetry. The user is responsible for the results of any use of the data for other than the intended purpose.

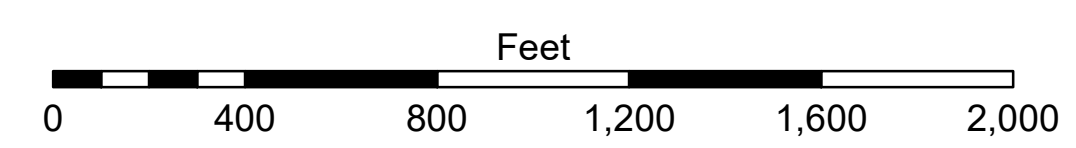
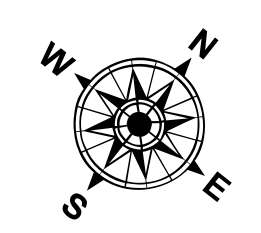
**Information Depicted on the Map:** The information depicted on the map represents the results of a survey conducted on the date shown. It is not to be used for any purpose other than that for which it was intended. The user is responsible for the results of any use of the data for other than the intended purpose.

U.S. ARMY CORPS OF ENGINEERS NEW ORLEANS DISTRICT		
Submitted:	Surveyed By: PM, LT	Checked By: JH
Recommended:	Plotted By: JH	Checked By: JH
Approved:	Chief, Survey Section	Chief, Waterways Maintenance Section

**BARATARIA WATERWAY  
BAYOU RIGAUD  
BW\_19\_RIG\_20240915\_CS\_POSTSTORM  
15 September 2024**



LEGEND			
--- Federal Navigation Channel	○ Cable Area	□ Borrow Area	■ -8' and above
— Federal Navigation Center Line	□ Placement Area	● Shoalest Sounding**	■ -8' to -12'
— As-built Pipeline/Cable	□ Anchorage Area	★ Beacon, General	■ -12' to -15'
..... Unconfirmed Pipeline/Cable	⊗ Obstruction Point	◆ Red Navigation Buoy	■ -15' and below
— Project Depth Contour	✙ Wrecks-Submerged	◆ Green Navigation Buoy	



**NOTES:**  
 Horizontal Coordinate System:  
 North American Datum of 1983 (NAD83), projected to the State Plane Coordinate System (SPCS), Louisiana South Zone. Distance units in U.S. Survey Feet.  
 Vertical Datum:  
 Soundings are shown in feet and indicate depths below Mean Low Gulf Datum (MLG).  
 Datum Relationships for gage 88410 as of July 2014:  
 0.0' NAVD83 (2009.55) = 0.08' MLLW = 1.33' MLG or 0.0' MLLW = 1.25' MLG  
 Distances on the Barataria Waterway are shown at 1 mile intervals.  
 The location of navigation aids are base on and provided by the U.S. Coast Guard and USACE survey crews.  
 2015 Aerial Photography data source: NAIP  
 Reference is N.O.A. Navigation Chart No. 11365.  
 \*\* Shoalest Sounding per Quarter per Reach.  
 \*\*\* High frequency (200 kHz) survey data represents the first signal return at a sounding location and will include suspended solids, known as "fluff", if present. Low frequency (20 kHz) survey data normally penetrates through this "fluff" layer to depict elevations of consolidated bottom material. Low frequency accuracies may vary depending on channel conditions and fathometer settings.

**Sheet Reference Number  
19 of 20**

Revision Number:  
4-2-20240920