

NOTE: SEE SHEET G-03 FOR GENERAL NOTES

NOTE: SEE SHEET C-30 FOR CAMERON LOOP



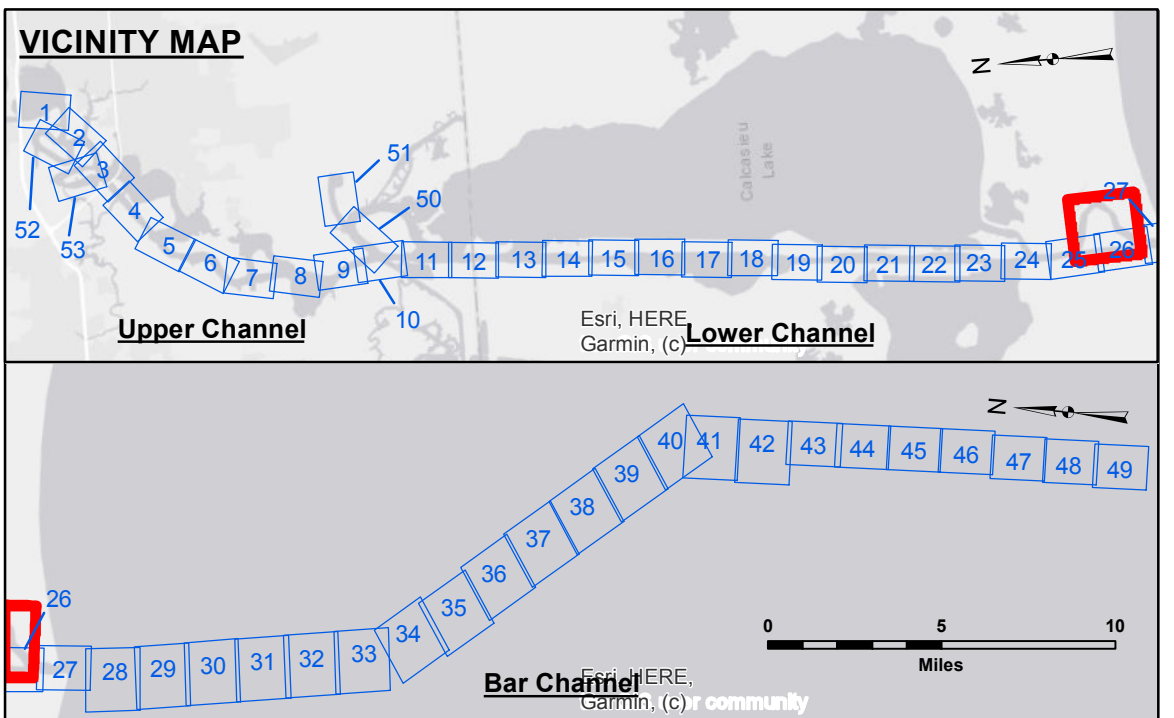
DISCLAIMER: The information contained herein is the property of the U.S. Army Corps of Engineers and is provided for informational purposes only. It is not to be used for any other purpose without the express written consent of the U.S. Army Corps of Engineers. The user assumes all liability for any use of this information. The user agrees to hold the U.S. Army Corps of Engineers harmless from any and all claims, damages, and expenses, including reasonable attorneys' fees, arising from any use of this information, whether or not such use was foreseeable, except as expressly provided herein. The U.S. Army Corps of Engineers makes no warranty, express or implied, in this information. The user agrees to hold the U.S. Army Corps of Engineers harmless from any and all claims, damages, and expenses, including reasonable attorneys' fees, arising from any use of this information, whether or not such use was foreseeable, except as expressly provided herein.

U.S. ARMY CORPS OF ENGINEERS NEW ORLEANS DISTRICT	
Submitted By: SPPS	Checked By: JH
Prepared By: JH	Approved By: JH
Recommended By: Chief, Survey Section	Chief, Waterways Maintenance Section

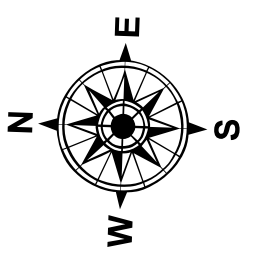
**CALCASIEU SHIP CHANNEL
CAMERON LOOP
CR_00_CML_20220511_CS
11 May 2022**

**Sheet
Reference
Number
1 of 1**

Revision Number:
42-2009409



LEGEND	
--- Federal Navigation Channel	● Cable Area
— Federal Navigation Center Line	■ Placement Area
— As-built Pipeline/Cable	□ Anchorage Area
..... Unconfirmed Pipeline/Cable	⊗ Obstruction Point
— Project Depth Contour	⚓ Wrecks-Submerged
■ Borrow Area	★ Shoalest Sounding**
● Beacon, General	★ Red Navigation Buoy
★ Green Navigation Buoy	■ -16' and above
■ -16' to -21'	■ -21' to -26'
■ -26' to -33'	■ -33' to -39'
■ -39' to -41'	■ -41' to -43'
■ -43' and below	



Gage Reading: CAMERON: 2.16 MLLW AVG
 Sea Conditions: CHOP
 Vessel Name: MV LAFOURCHE
 Survey Type: CONDITION
 Sounding Frequency***: LOW

Scale: 0 400 800 1,200 1,600 Feet

NOTES:
 Horizontal Coordinate System:
 North American Datum of 1983 (NAD83), projected to the State Plane
 Coordinate System (SPCS), Louisiana South Zone. Distance units in U.S. Survey Feet.
 Vertical Datum:
 Soundings are shown in feet and indicate depths below Mean Lower Low Water Datum (MLLW).
 Datum Relationships for gage 73650 as of December 2013:
 0.0' NAVD88 (2009.55) = 1.3' MLLW = 2.3' MLG or 0.0' MLLW = 1.0' MLG
 Distances on the Calcasieu River are shown at 1 mile intervals.
 The location of navigation aids are based on and provided by the U.S. Coast Guard
 and USACE survey crews.
 2010 Aerial Photography data source: NAIP
 Reference is N.O.A. Navigation Chart No. 11339.
 *** Shoalest Sounding per Quarter per Reach.
 ** High frequency (200 kHz) survey data represents the first signal return at a sounding
 location and will include suspended solids, known as "fluff", if present. Low frequency (20 kHz)
 survey data normally penetrates through this "fluff" layer to depict elevations of consolidated bottom
 material. Low frequency accuracies may vary depending on channel conditions and fathometer
 settings.