



NOTE: SEE SHEET G-03 FOR GENERAL NOTES

NOTE: SEE SHEET C-30 FOR CAMERON LOOP



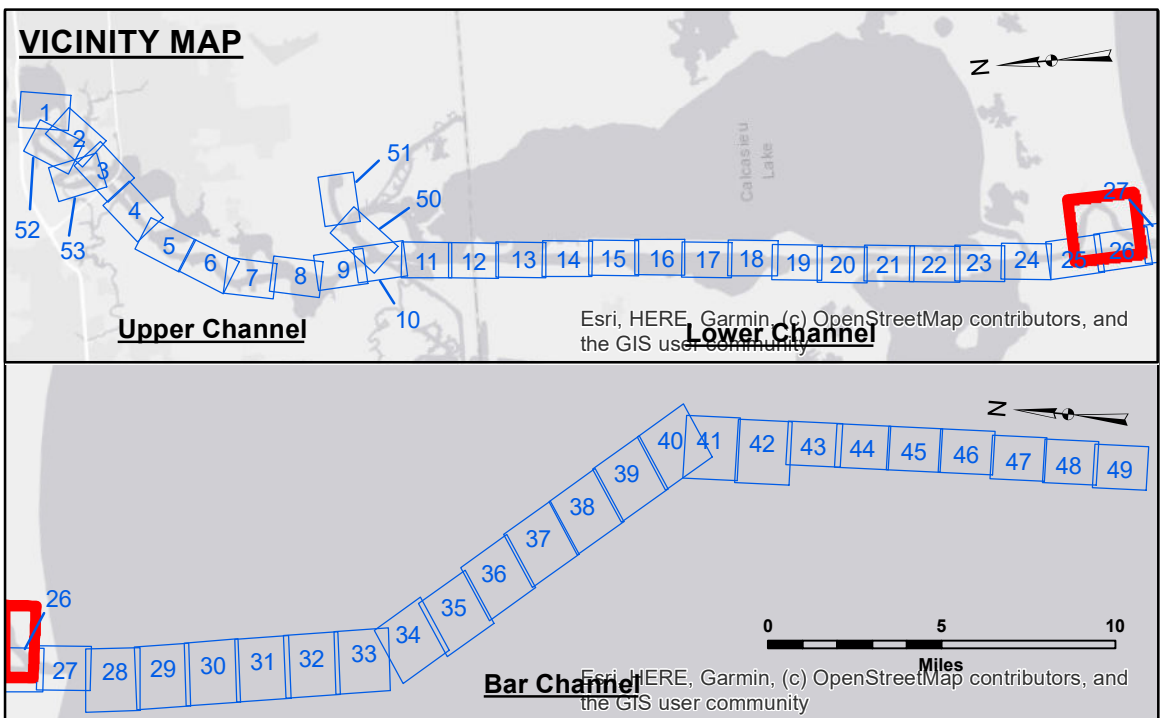
**DISCLAIMER:** The United States Government makes no warranty, express or implied, for the use of the information contained herein for any purpose other than that for which it was prepared. The user assumes all liability for any use of the information contained herein for any purpose other than that for which it was prepared. The user assumes all liability for any use of the information contained herein for any purpose other than that for which it was prepared. The user assumes all liability for any use of the information contained herein for any purpose other than that for which it was prepared.

Submitted By:	SPSR
Prepared By:	AO
Checked By:	AO
Approved By:	AO

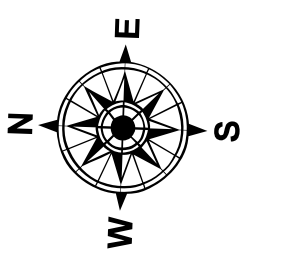
**CALCASIEU SHIP CHANNEL  
CAMERON LOOP  
CR\_00\_CML\_20220823\_CS  
23 August 2022**

**Sheet Reference Number  
1 of 1**

Revision Number: 4.2-20090430



LEGEND	
--- Federal Navigation Channel	□ Cable Area
--- Federal Navigation Center Line	□ Placement Area
— As-built Pipeline/Cable	□ Anchorage Area
..... Unconfirmed Pipeline/Cable	⊗ Obstruction Point
— Project Depth Contour	⚓ Wrecks-Submerged
□ Borrow Area	★ Beacon, General
● Shoalest Sounding**	★ Red Navigation Buoy
★ Beacon, General	★ Green Navigation Buoy
★ Red Navigation Buoy	■ -16' and above
★ Green Navigation Buoy	■ -16' to -21'
	■ -21' to -26'
	■ -26' to -33'
	■ -33' to -39'
	■ -39' to -41'
	■ -41' to -43'
	■ -43' and below



Gage Reading: CAMERON: 2.0 MLLW AVG  
 Sea Conditions: CHOP  
 Vessel Name: OB-169  
 Survey Type: CONDITION  
 Sounding Frequency\*\*\*: HIGH/LOW

Vertical Datum:  
 Soundings are shown in feet and indicate depths below Mean Lower Low Water Datum (MLLW).  
 Datum Relationships for gage 73650 as of December 2013:  
 0.0' NAVD88 (2009.55) = 1.3' MLLW = 2.3' MLG or 0.0' MLLW = 1.0' MLG

Distances on the Calcasieu River are shown at 1 mile intervals.  
 The location of navigation aids are based on and provided by the U.S. Coast Guard and USACE survey crews.

2010 Aerial Photography data source: NAIP  
 Reference is N.O.A.A. Navigation Chart No. 11339.  
 \*\*\* Shoalest Sounding per Quarter per Reach.

**NOTES:**  
 Horizontal Coordinate System:  
 North American Datum of 1983 (NAD83), projected to the State Plane Coordinate System (SPCS), Louisiana South Zone. Distance units in U.S. Survey Feet.