



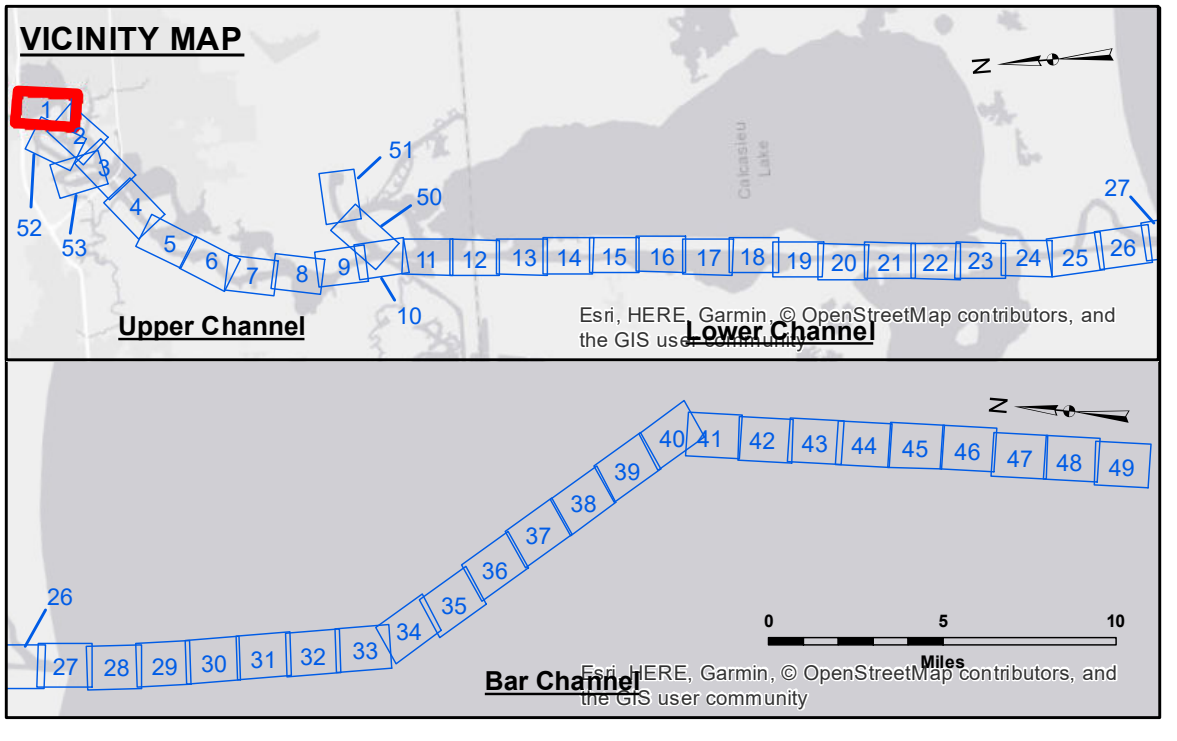
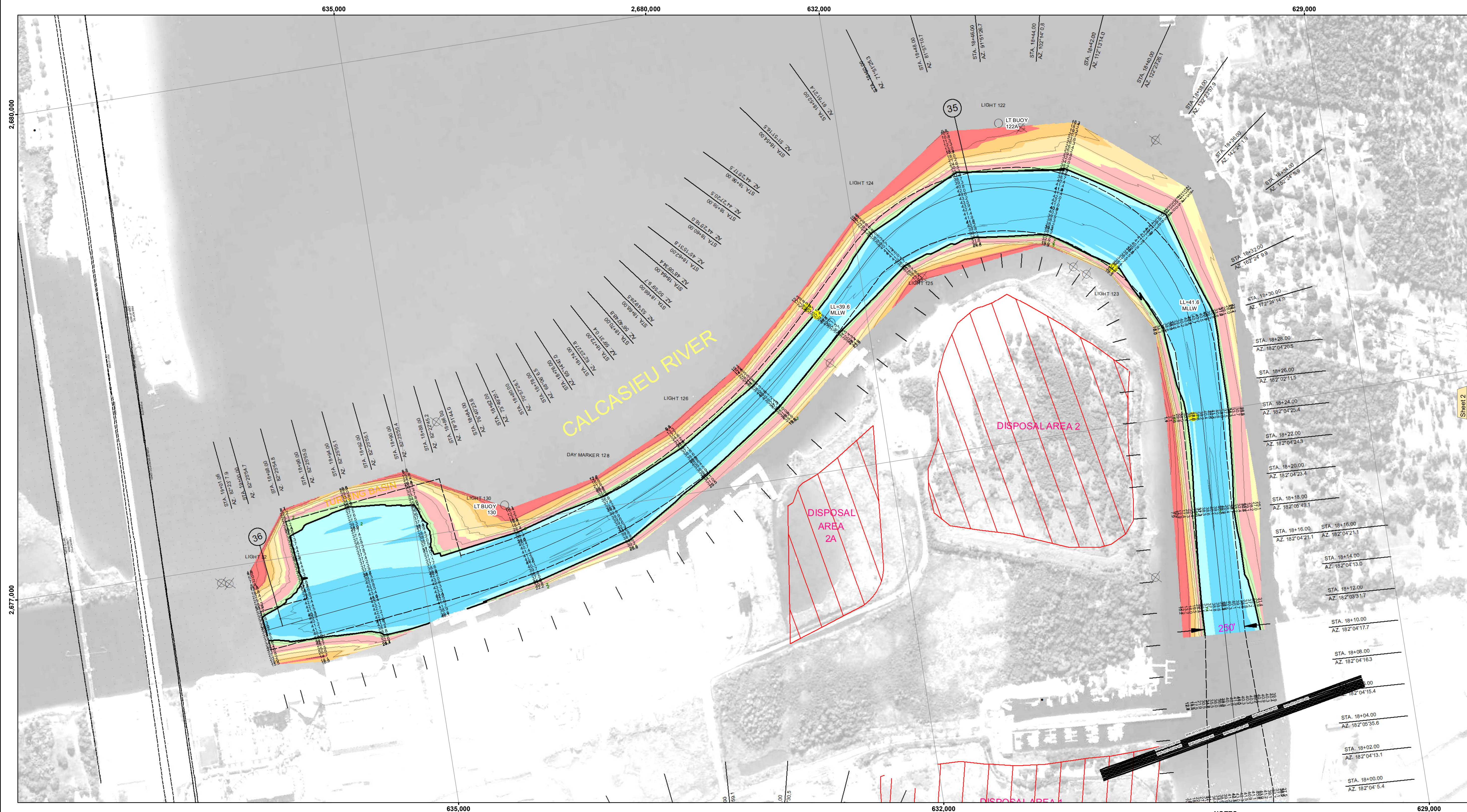
**DISCLAIMER**  
The United States Government furnishes these data and the recipient accepts and uses them with the express understanding that the data are not to be used for purposes other than those for which they were prepared, or implied concerning the accuracy, completeness, reliability, usability or suitability for any particular purpose of the recipient. The user is responsible for the results obtained from the use of the data. Application of the data for other than its intended purpose may result in injury or damage to persons or property. The United States Government accepts no responsibility for changes in the data or conditions that may occur after the date of the data collection. The information depicted on this map represents the results of a survey conducted on or about the date of the data collection. It is not intended to represent the general condition existing at that time.

U.S. ARMY CORPS OF ENGINEERS NEW ORLEANS DISTRICT		
Submitted:	Surveyed By: DS, JH	Plotted By: AO
Recommended:	Checked By: AC	Checked By: AC
Chief, Waterways Maintenance Section		

**CALCASIEU SHIP CHANNEL  
UPPER SHEET 1  
CR\_01\_UPR\_20180919\_CS  
19 September 2018**

**Sheet Reference Number  
1 of 53**

Revision Number:  
3.13-20160811



LEGEND			
- - -	Federal Navigation Channel	3	Fluff Thickness (feet)*
-	Federal Navigation Center Line	●	Cable Area
-	As-built Pipeline/Cable	■	Placement Area
.....	Unconfirmed Pipeline/Cable	□	Anchorage Area
-	Project Depth Contour	⊗	Obstruction Point
		⚓	Wrecks-Submerged
		★	Beacon, General
		◆	Red Navigation Buoy
		◇	Green Navigation Buoy
		■	-16' and above
		■	-16' to -21'
		■	-21' to -26'
		■	-26' to -28'
		■	-28' to -34'
		■	-34' to -36'
		■	-36' to -38'
		■	-38' and below

Gage Reading: LAKE CHARLES: 1.4 MLLW  
Sea Conditions: CALM  
Vessel Name: OB-167  
Survey Type: CONDITION  
Sounding Frequency\*\*\*: LOW

Vertical Datum:  
Soundings are shown in feet and indicate depths below Mean Lower Low Water (MLLW).  
Datum Relationships for gage 73550 as of December 2013:  
0.0' NAVD83 (OPUS 2010) = 0.6' MLLW = 1.6' MLG or 0.0' MLLW = 1.0' MLG

Distances on the Calcasieu River are shown at 1 mile intervals.

The location of navigation aids are based on and provided by the U.S. Coast Guard and USACE survey crews.

2015 Aerial Photography data source: NAIP  
Reference is N.O.A. Navigation Chart No. 11339.

\* Difference between high and low frequency elevations where greater than 1.0'.  
\*\* Shoalest Sounding per Quarter per Reach.

\*\*\* High frequency (200 kHz) survey data represents the first signal return at a sounding location and will include suspended solids, known as "fluff", if present. Low frequency (20 kHz) survey data normally penetrates through this "fluff" layer to depict elevations of consolidated bottom material. Low frequency accuracies may vary depending on channel conditions and fathometer settings.

**NOTES:**  
Horizontal Coordinate System:  
North American Datum of 1983 (NAD83), projected to the State Plane Coordinate System (SPCS), Louisiana South Zone. Distance units in U.S. Survey Feet.

Notes and disclaimer text regarding data accuracy and usage.