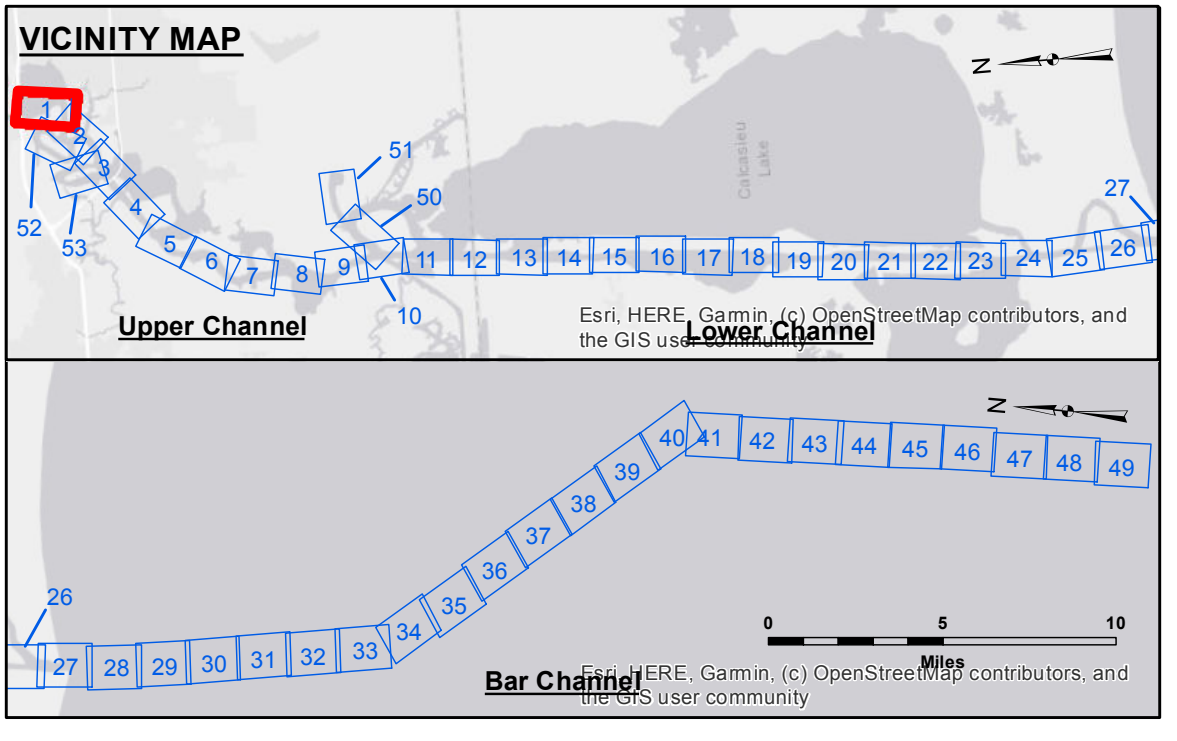


DISCLAIMER
 The information depicted on this map represents the results of a survey conducted by the U.S. Army Corps of Engineers. The user is responsible for the accuracy, completeness, reliability, usability, or suitability for any particular purpose of the information. The user is responsible for the accuracy, completeness, reliability, usability, or suitability for any particular purpose of the information. The user is responsible for the accuracy, completeness, reliability, usability, or suitability for any particular purpose of the information. The user is responsible for the accuracy, completeness, reliability, usability, or suitability for any particular purpose of the information.

U.S. ARMY CORPS OF ENGINEERS NEW ORLEANS DISTRICT		
Submitted:	Surveyed By: RYLAND/ADAMS	Plotted By: BD
Recommended:	Chief, Survey Section	Checked By: AC
Approved:	Chief, Waterways Maintenance Section	

**CALCASIEU SHIP CHANNEL
 UPPER SHEET 1
 CR_01_UPR_20200626_CS
 26 June 2020**

**Sheet Reference Number
 1 of 53**



LEGEND	
--- Federal Navigation Channel	○ Cable Area
— Federal Navigation Center Line	□ Placement Area
— As-built Pipeline/Cable	□ Anchorage Area
..... Unconfirmed Pipeline/Cable	⊗ Obstruction Point
— Project Depth Contour	⚓ Wrecks-Submerged
3 Fluff Thickness (feet)*	★ Beacon, General
● Shoalest Sounding**	◆ Red Navigation Buoy
◆ Green Navigation Buoy	

Gage Reading: LAKE CHARLES: 1.80 MLLW AVG.
 Sea Conditions: CALM
 Vessel Name: MV VALENTOUR
 Survey Type: CONDITION
 Sounding Frequency***: LOW

NOTES:
 Horizontal Coordinate System: North American Datum of 1983 (NAD83), projected to the State Plane Coordinate System (SPCS), Louisiana South Zone. Distance units in U.S. Survey Feet.
 Vertical Datum: Soundings are shown in feet and indicate depths below Mean Lower Low Water (MLLW). Datum Relationships for gage 73550 as of December 2013: 0.0 NAVD83 (OPUS 2010) = 0.6' MLLW = 1.6' MLG or 0.0' MLLW = 1.0' MLG
 Distances on the Calcasieu River are shown at 1 mile intervals.
 The location of navigation aids are base on and provided by the U.S. Coast Guard and USACE survey crews.
 2015 Aerial Photography data source: NAIP
 Reference is N.O.A.A. Navigation Chart No. 11339.
 * Difference between high and low frequency elevations where greater than 1.0'.
 ** Shoalest Sounding per Quarter per Reach.
 *** High frequency (200 kHz) survey data represents the first signal return at a sounding location and will include suspended solids, known as "fluff", if present. Low frequency (20 kHz) survey data normally penetrates through this "fluff" layer to depict elevations of consolidated bottom material. Low frequency accuracies may vary depending on channel conditions and fathometer settings.