

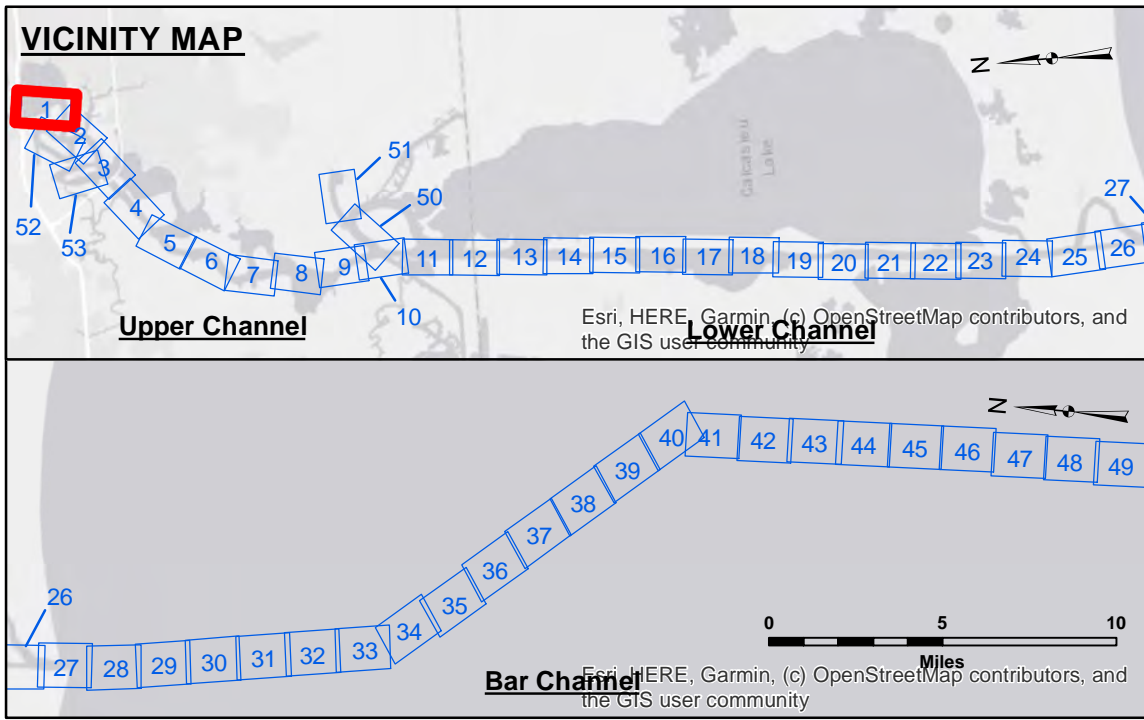
Distribution Liability: The data represents the results of data collection/processing for a specific US Army Corps of Engineers project. It is only valid for its intended use, content, time and accuracy specifications. The user is responsible for the results and accuracy of the data for other than its intended purpose. Data Constraints: Hydrographic survey data is subject to change rapidly due to several factors including but not limited to changing hydrographical conditions which develop after the date of the survey. The user is responsible for the date of the survey data used. The information depicted on this map represents the results of a survey conducted under the terms and conditions of the engineering contract. The user is responsible for the date of the survey data used. The information depicted on this map represents the results of a survey conducted under the terms and conditions of the engineering contract. The user is responsible for the date of the survey data used.

Access Constraints: The United States Government furnishes this data and the recipient accepts and uses them with the express understanding that the data is provided for informational purposes only, and is not intended for navigation. The user is responsible for the accuracy, completeness, reliability, usability or suitability for any particular purpose of the data. The user is responsible for the accuracy, completeness, reliability, usability or suitability for any particular purpose of the data. The user is responsible for the accuracy, completeness, reliability, usability or suitability for any particular purpose of the data. The user is responsible for the accuracy, completeness, reliability, usability or suitability for any particular purpose of the data. The user is responsible for the accuracy, completeness, reliability, usability or suitability for any particular purpose of the data.

Submitted:	Reviewed By:	Checked By:
	SP-SR	AC
Recommended:	Plotted By:	
Chart Survey Section	BD	
Approval:		
Chart, Waterways Maintenance Section		

**CALCASIEU SHIP CHANNEL
UPPER SHEET 1
CR_01_UPR_20220328_CS
28 March 2022**

**Sheet Reference Number
1 of 53**



LEGEND

--- Federal Navigation Channel	○ Cable Area	3 Fluff Thickness (feet)*	-16' and above
— Federal Navigation Center Line	□ Placement Area	● Shoalest Sounding**	-16' to -21'
— As-built Pipeline/Cable	□ Anchorage Area	★ Beacon, General	-21' to -26'
..... Unconfirmed Pipeline/Cable	⊗ Obstruction Point	♦ Red Navigation Buoy	-26' to -28'
— Project Depth Contour	⚓ Wrecks-Submerged	◆ Green Navigation Buoy	-28' to -34'
			-34' to -36'
			-36' to -38'
			-38' and below

NOTES:

Horizontal Coordinate System:
North American Datum of 1983 (NAD83), projected to the State Plane Coordinate System (SPCS), Louisiana South Zone. Distance units in U.S. Survey Feet.

Vertical Datum:
Soundings are shown in feet and indicate depths below Mean Lower Low Water (MLLW). Datum Relationships for gage 73550 as of December 2013:
0.0 NAVD83 (OPUS 2010) = 0.6' MLLW = 1.6' MLG or 0.0' MLLW = 1.0' MLG

Distances on the Calcasieu River are shown at 1 mile intervals.

The location of navigation aids are base on and provided by the U.S. Coast Guard and USACE survey crews.

2015 Aerial Photography data source: NAIP
Reference is N.O.A.A. Navigation Chart No. 11339.

* Difference between high and low frequency elevations where greater than 1.0'.
** Shoalest Sounding per Quarter per Reach.

*** High frequency (200 kHz) survey data represents the first signal return at a sounding location and will include suspended solids, known as "fluff", if present. Low frequency (20 kHz) survey data normally penetrates through this "fluff" layer to depict elevations of consolidated bottom material. Low frequency accuracies may vary depending on channel conditions and fathometer settings.

Gage Reading: VRS RTK NTRIP: 0.3 MLLW AVG.
Sea Conditions: CHOPPY
Vessel Name: OB-169
Survey Type: CONDITION
Sounding Frequency***: LOW