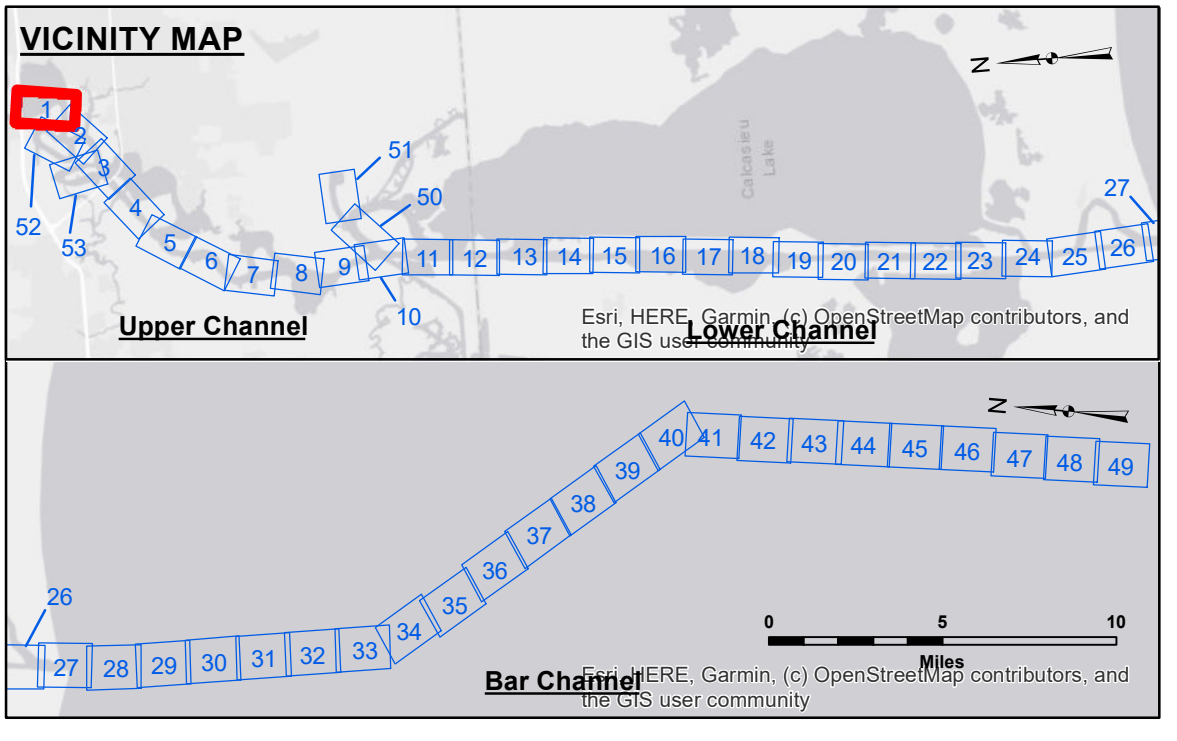


DISCLAIMER
 The information depicted on this map represents the results of a survey conducted for a specific US Army Corps of Engineers project. It is only valid for its intended use, content, time and accuracy specifications. The user is responsible for the results of any use of this information for purposes other than those intended for this purpose. Data Constants: Hydrographic survey data is subject to change rapidly due to several factors including but not limited to dredging operations, changes in channel conditions, and changes in the hydrographic conditions which develop after the date of the survey. The user is responsible for the results of any use of this information for purposes other than those intended for this purpose. The information depicted on this map represents the results of a survey conducted for a specific US Army Corps of Engineers project. It is only valid for its intended use, content, time and accuracy specifications. The user is responsible for the results of any use of this information for purposes other than those intended for this purpose. Data Constants: Hydrographic survey data is subject to change rapidly due to several factors including but not limited to dredging operations, changes in channel conditions, and changes in the hydrographic conditions which develop after the date of the survey. The user is responsible for the results of any use of this information for purposes other than those intended for this purpose.

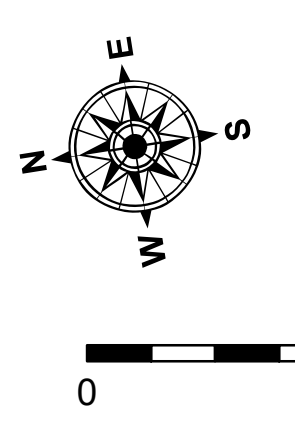
U.S. ARMY CORPS OF ENGINEERS NEW ORLEANS DISTRICT		
Submitted:	Surveyed By: SP-JS	Plotted By: JH
Recommended: Chief, Survey Section	Checked By: JH	Approved: Chief, Waterways Maintenance Section

**CALCASIEU SHIP CHANNEL
 UPPER SHEET 1
 CR_01_UPR_20230926_CS
 26 September 2023**

**Sheet Reference Number
 1 of 53**



LEGEND	
--- Federal Navigation Channel	○ Cable Area
— Federal Navigation Center Line	□ Placement Area
— As-built Pipeline/Cable	□ Anchorage Area
..... Unconfirmed Pipeline/Cable	⊗ Obstruction Point
— Project Depth Contour	⚓ Wrecks-Submerged
3 Fluff Thickness (feet)*	★ Beacon, General
● Shoalest Sounding**	♦ Red Navigation Buoy
	◇ Green Navigation Buoy



Gage Reading: LAKE CHARLES VRN: 1.50 MLLW AV
 Sea Conditions: CALM
 Vessel Name: MV TECHE
 Survey Type: CONDITION
 Sounding Frequency***: LOW

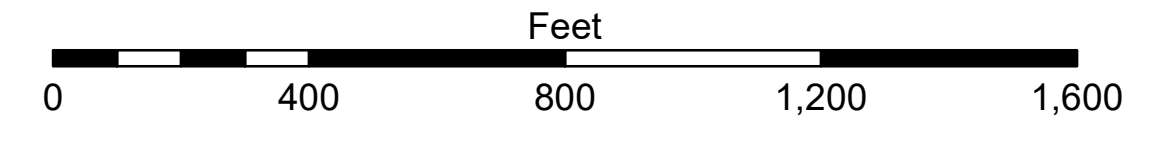
Vertical Datum:
 Soundings are shown in feet and indicate depths below Mean Lower Low Water (MLLW). Datum Relationships for gage 73550 as of December 2013:
 0.0' NAVD83 (OPUS 2010) = 0.6' MLLW = 1.6' MLG or 0.0' MLLW = 1.0' MLG

Distances on the Calcasieu River are shown at 1 mile intervals.

The location of navigation aids are base on and provided by the U.S. Coast Guard and USACE survey crews.

2022 Aerial Photography data source: PAR LLC
 Reference is N.O.A.A. Navigation Chart No. 11339.

* Difference between high and low frequency elevations where greater than 1.0'.
 ** Shoalest Sounding per Quarter per Reach.
 *** High frequency (200 kHz) survey data represents the first signal return at a sounding location and will include suspended solids, known as "fluff", if present. Low frequency (20 kHz) survey data normally penetrates through this "fluff" layer to depict elevations of consolidated bottom material. Low frequency accuracies may vary depending on channel conditions and fathometer settings.



NOTES:
 Horizontal Coordinate System:
 North American Datum of 1983 (NAD83), projected to the State Plane Coordinate System (SPCS), Louisiana South Zone. Distance units in U.S. Survey Feet.