

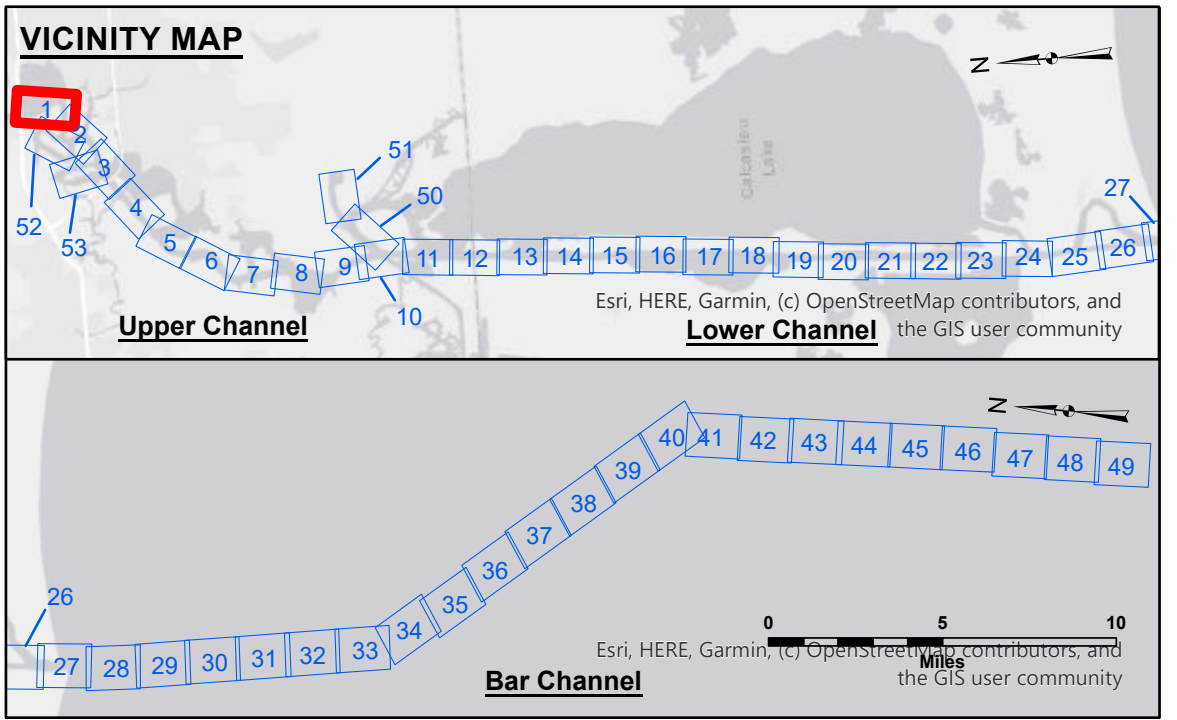
DISCLAIMER: The data represents the results of data collection/processing for a specific US Army Corps of Engineers activity and indicates the general existing conditions. As such, the user is responsible for the accuracy, completeness, and reliability of the data furnished. The user is responsible for any of the application of the data for other than its intended purpose. This data is not intended to be used for any other purpose. This data is not intended to be used for any other purpose. This data is not intended to be used for any other purpose.

DISCLAIMER: The United States Government furnishes these data and the recipient accepts them with the express understanding that the Government makes no warranty, expressed or implied, concerning the accuracy, completeness, and reliability of the data furnished. The user is responsible for any use of the data for other than its intended purpose. This data is not intended to be used for any other purpose. This data is not intended to be used for any other purpose.

U.S. ARMY CORPS OF ENGINEERS		
Submitted:	Surveyed By: SPJS	Plotted By: BID
Recommended: Chief, Survey Section	Checked By: AO/JH	Approved: Chief, Waterways Maintenance Section

**CALCASIEU SHIP CHANNEL
UPPER SHEET 1
CR_01_UPR_20250403_CS
03 April 2025**

**Sheet Reference Number
1 of 53**



LEGEND	
--- Federal Navigation Channel	○ Cable Area
— Federal Navigation Center Line	□ Placement Area
— As-built Pipeline/Cable	□ Anchorage Area
..... Unconfirmed Pipeline/Cable	⊗ Obstruction Point
— Project Depth Contour	⚓ Wrecks-Submerged
3 Fluff Thickness (feet)*	★ Beacon, General
● Shoalest Sounding**	♦ Red Navigation Buoy
● Green Navigation Buoy	

NOTES:

Horizontal Coordinate System: North American Datum of 1983 (NAD83), projected to the State Plane Coordinate System (SPCS), Louisiana South Zone. Distance units in U.S. Survey Feet.

Vertical Datum: Soundings are shown in feet and indicate depths below Mean Lower Low Water (MLLW). Datum Relationships for gage 73550 as of December 2013: 0.0 NAVD83 (OPUS 2010) = 0.6' MLLW = 1.6' MLG or 0.0' MLLW = 1.0' MLG

Distances on the Calcasieu River are shown at 1 mile intervals.

The location of navigation aids are base on and provided by the U.S. Coast Guard and USACE survey crews.

2022 Aerial Photography data source: PAR LLC
Reference is N.O.A. Navigation Chart No. 11339.

* Difference between high and low frequency elevations where greater than 1.0'.
** Shoalest Sounding per Quarter per Reach.

*** High frequency (200 kHz) survey data represents the first signal return at a sounding location and will include suspended solids, known as "fluff", if present. Low frequency (20 kHz) survey data normally penetrates through this "fluff" layer to depict elevations of consolidated bottom material. Low frequency accuracies may vary depending on channel conditions and fathometer settings.

Gage Reading: DM 119 VRN: 2.3 MLLW AVG.
Sea Conditions: CHOPPY
Vessel Name: MV TECHE
Survey Type: CONDITION
Sounding Frequency***: LOW