

DISCLAIMER: The data represents the results of data collection/processing for a specific US Army Corps of Engineers activity and indicates the general operating conditions as such. The user is responsible for the accuracy, completeness, and reliability of the data furnished. The user is responsible for any of the application of the data for other than its intended purpose. This data is intended for U.S. Army Corps of Engineers internal use. Present insurance should not be relied upon for any other purpose.

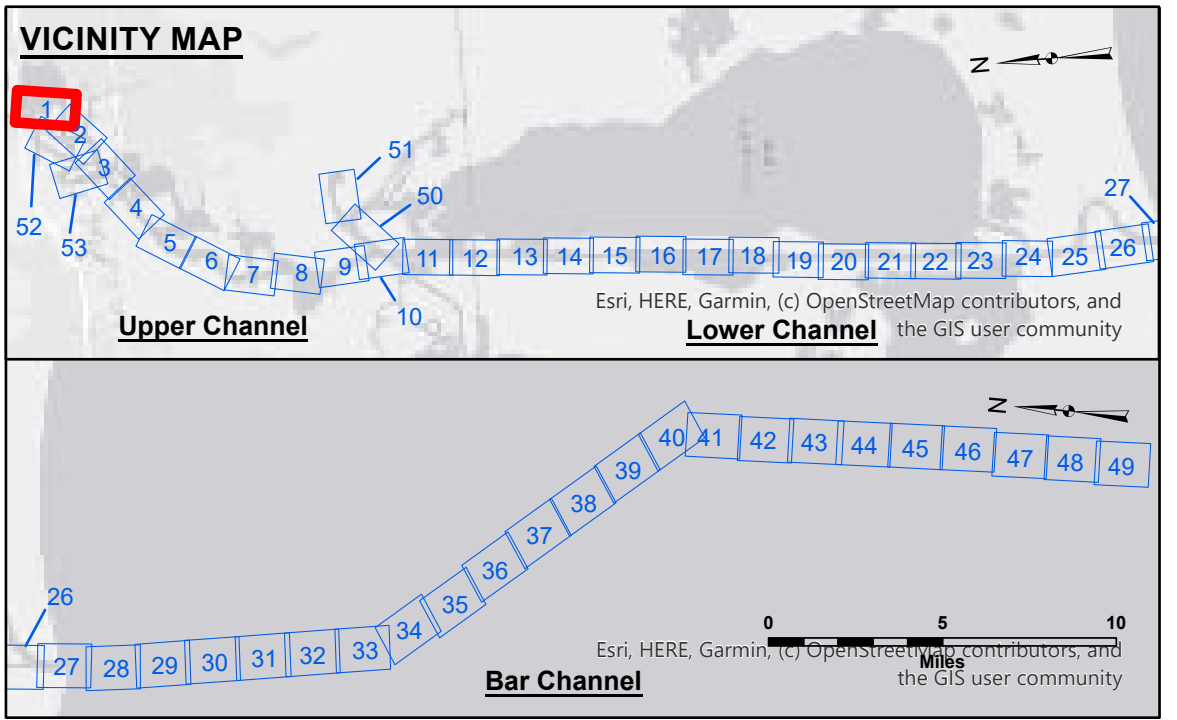
DISCLAIMER: The United States Government furnishes these data and the recipient accepts and uses them with the express understanding that the Government makes no warranty, expressed, implied, or otherwise, concerning the accuracy, completeness, or reliability of the data furnished. The recipient agrees to indemnify the United States Government from and hold it harmless from any liability whatsoever to any person by reason of any use of these data, in whole or in part, for any purpose other than that for which they were prepared. The recipient may not transfer these data to others without also transferring this disclaimer. The information depicted on this map represents the results of a survey conducted on or about the date shown in the title block and is not intended to represent the general condition existing at that time.

U.S. ARMY CORPS OF ENGINEERS		
Submitted:	Surveyed By: SPJS	Plotted By: JHT
Recommended:	Chief, Survey Section	Checked By: JHT
Approved:	Chief, Waterways Maintenance Section	

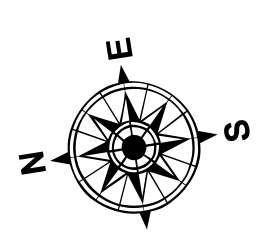
**CALCASIEU SHIP CHANNEL
UPPER SHEET 1
CR_01_UPR_20250702_CS
02 July 2025**

**Sheet Reference Number
1 of 53**

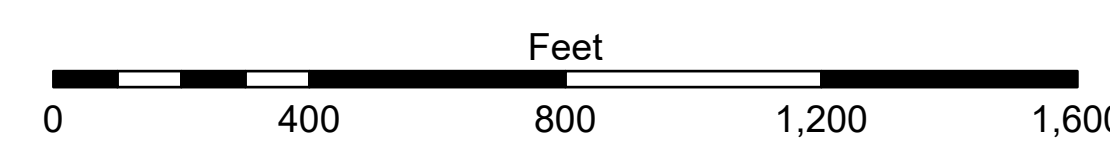
Revision Number: 5.25.04.09-5.25.04.03



LEGEND			
--- Federal Navigation Channel	○ Cable Area	3 Fluff Thickness (feet)*	-16' and above
— Federal Navigation Center Line	□ Placement Area	● Shoalest Sounding**	-16' to -21'
— As-built Pipeline/Cable	□ Anchorage Area	★ Beacon, General	-21' to -26'
..... Unconfirmed Pipeline/Cable	⊗ Obstruction Point	◆ Red Navigation Buoy	-26' to -28'
— Project Depth Contour	⚓ Wrecks-Submerged	◆ Green Navigation Buoy	-28' to -34'
			-34' to -36'
			-36' to -38'
			-38' and below



Gage Reading: DM119 VRN: 1.15 MLLW AVG
 Sea Conditions: CALM
 Vessel Name: MV TECHE
 Survey Type: CONDITION
 Sounding Frequency***: LOW



NOTES:
 Horizontal Coordinate System: North American Datum of 1983 (NAD83), projected to the State Plane Coordinate System (SPCS), Louisiana South Zone. Distance units in U.S. Survey Feet.
 Vertical Datum: Soundings are shown in feet and indicate depths below Mean Lower Low Water (MLLW). Datum Relationships for gage 73550 as of December 2013: 0.0' NAVD83 (OPUS 2010) = 0.6' MLLW = 1.6' MLG or 0.0' MLLW = 1.0' MLG
 Distances on the Calcasieu River are shown at 1 mile intervals.
 The location of navigation aids are base on and provided by the U.S. Coast Guard and USACE survey crews.
 2022 Aerial Photography data source: PAR LLC
 Reference is N.O.A. Navigation Chart No. 11339.
 * Difference between high and low frequency elevations where greater than 1.0'.
 ** Shoalest Sounding per Quarter per Reach.
 *** High frequency (200 kHz) survey data represents the first signal return at a sounding location and will include suspended solids, known as "fluff", if present. Low frequency (20 kHz) survey data normally penetrates through this "fluff" layer to depict elevations of consolidated bottom material. Low frequency accuracies may vary depending on channel conditions and fathometer settings.