

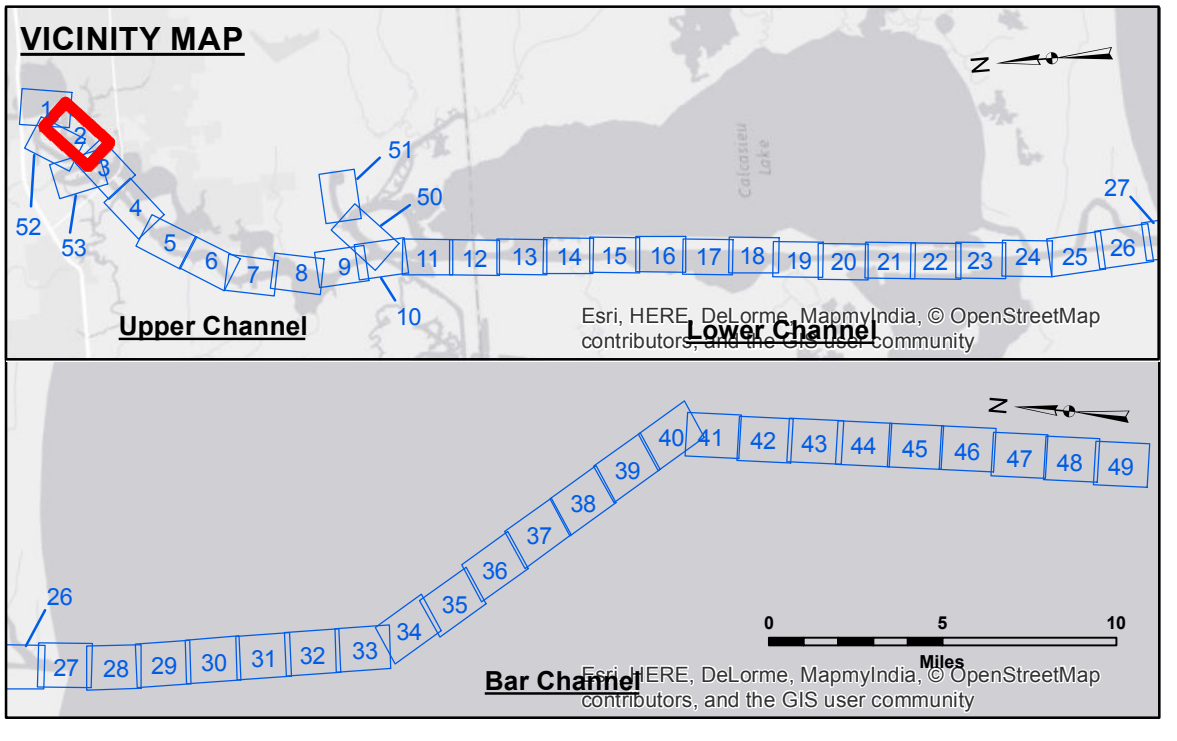
DISTRIBUTION LIABILITY: The data represents the results of data collection/processing for a specific US Army Corps of Engineers project. It is only valid for its intended use, content, time and accuracy specifications. The user is responsible for the results of any application of the data for other than its intended purpose.

DATA CONSTRAINTS: Hydrographic survey data is subject to change rapidly due to several factors including but not limited to dredging, shoaling, and other channel changes. The user is responsible for the results of any application of the data for other than its intended purpose.

DISCLAIMER: The information depicted on this map represents the results of a survey conducted on the date of the survey. It is not intended to represent the general condition existing at that time.

U.S. ARMY CORPS OF ENGINEERS NEW ORLEANS DISTRICT		
Submitted:	Surveyed By: SR,JH	Plotted By: BTD
Recommended:	Checked By: TAF	Checked By: TAF
Approved:	Chart, Waterways Maintenance Section	

**CALCASIEU SHIP CHANNEL
UPPER SHEET 2
CR_02_UPR_20150729
29 July 2015**



LEGEND			
--- Federal Navigation Channel	○ Cable Area	□ Borrow Area	■ -15' and above
— Federal Navigation Center Line	□ Placement Area	● Shoalest Sounding**	■ -15' to -20'
— As-built Pipeline/Cable	□ Anchorage Area	★ Beacon, General	■ -20' to -25'
..... Unconfirmed Pipeline/Cable	⊗ Obstruction Point	◆ Red Navigation Buoy	■ -25' to -32'
— Project Depth Contour	⚓ Wrecks-Submerged	◆ Green Navigation Buoy	■ -32' to -38'
			■ -38' to -40'
			■ -40' to -42'
			■ -42' and below

Gage Reading: LAKE CHARLES: 2.2 MLG
Sea Conditions: CALM
Vessel Name: MV TECHE
Survey Type: CONDITION
Sounding Frequency*:** LOW

Vertical Datum:
 Soundings are shown in feet and indicate depths below Mean Low Gull Datum (MLG).
 Datum Relationships for gage 73550 as of December 2013:
 0.0' NAVD83 (OPUS 2010) = 0.6' MLLW = 1.6' MLG or 0.0' MLLW = 1.0' MLG

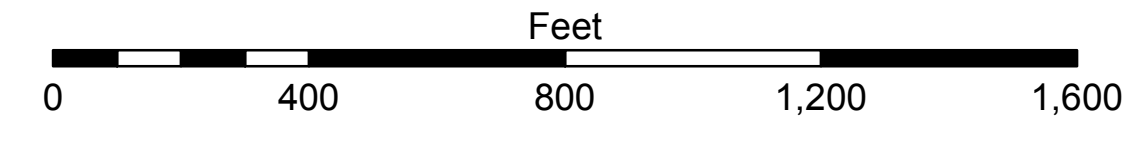
Distances on the Calcasieu River are shown at 1 mile intervals.

The location of navigation aids are based on and provided by the U.S. Coast Guard and USACE survey crews.

2010 Aerial Photography data source: NAIP
 Reference is N.O.A.A. Navigation Chart No. 11339.

** Shoalest Sounding per Quarter per Reach.

*** High frequency (200 kHz) survey data represents the first signal return at a sounding location and will include suspended solids, known as "fluff", if present. Low frequency (20 kHz) survey data normally penetrates through this "fluff" layer to depict elevations of consolidated bottom material. Low frequency accuracies may vary depending on channel conditions and fathometer settings.



Sheet Reference Number
2 of 53