

DISPOSAL AREA 4

DISPOSAL AREA 1

PORT OF LAKE CHARLES (0.0' GAGE DATUM)
PORT AND PASS OF LAKE CHARLES: 73550
0.0' NAVD88 = 0.6' MLLW = 1.6' MLG

LL=44.0 MLLW
LL=46.0 MLLW
LL=44.0 MLLW

LL=43.0 MLLW
LL=45.0 MLLW
LL=46.0 MLLW
LL=46.0 MLLW

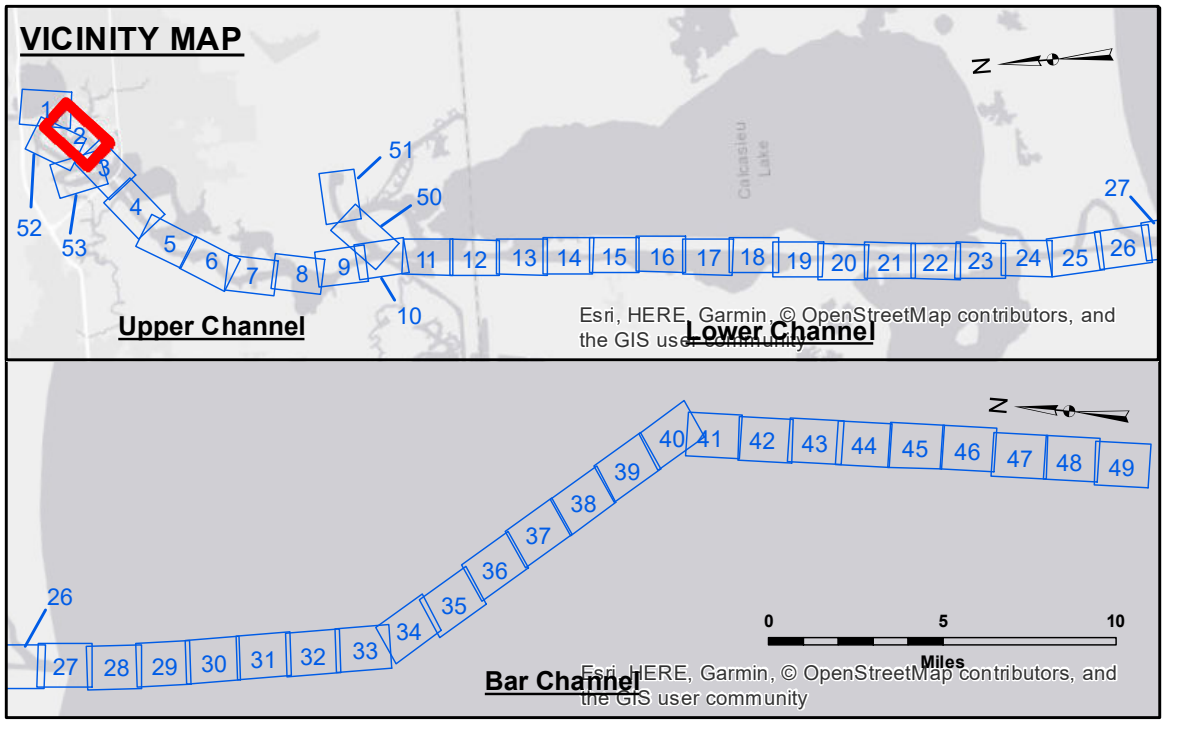
PORT OF LAKE CHARLES (0.0' GAGE DATUM)
PORT AND PASS OF LAKE CHARLES: 73550
0.0' NAVD88 = 0.6' MLLW = 1.6' MLG

U.S. ARMY CORPS OF ENGINEERS
NEW ORLEANS DISTRICT

Submitted:	Surveyed By: JH/PS
Recommended:	Plotted By: AO
Approved:	Checked By: AO

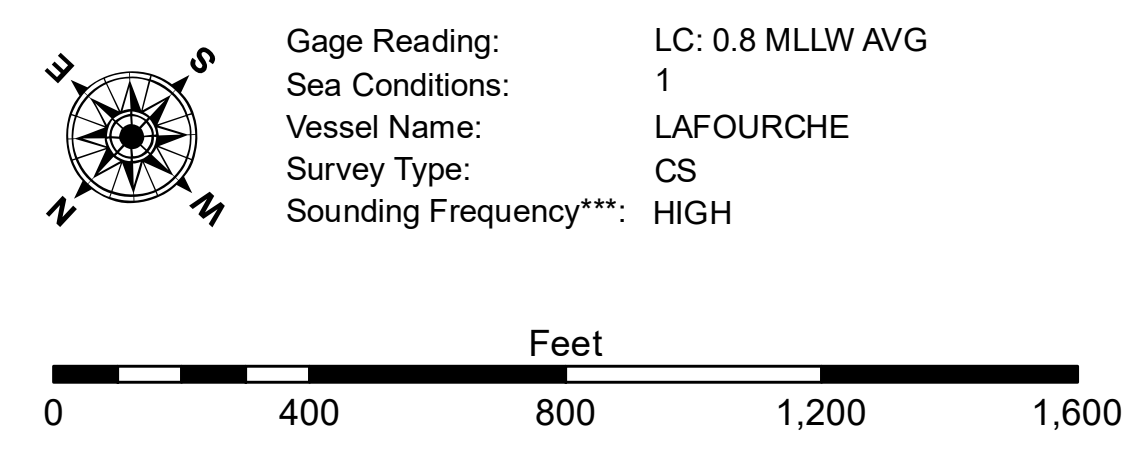
Chief, Waterways Maintenance Section

**CALCASIEU SHIP CHANNEL
UPPER SHEET 2
CR_02_UPR_20190116_CS
16 January 2019**



LEGEND

--- Federal Navigation Channel	○ Cable Area	3 Fluff Thickness (feet)*	-16' and above
— Federal Navigation Center Line	□ Placement Area	● Shoalest Sounding**	-16' to -21'
— As-built Pipeline/Cable	⊗ Anchorage Area	★ Beacon, General	-21' to -26'
..... Unconfirmed Pipeline/Cable	⊗ Obstruction Point	◆ Red Navigation Buoy	-26' to -33'
— Project Depth Contour	⊗ Wrecks-Submerged	◆ Green Navigation Buoy	-33' to -39'
			-39' to -41'
			-41' to -43'
			-43' and below



NOTES:
Horizontal Coordinate System:
North American Datum of 1983 (NAD83), projected to the State Plane Coordinate System (SPCS), Louisiana South Zone. Distance units in U.S. Survey Feet.

Vertical Datum:
Soundings are shown in feet and indicate depths below Mean Lower Low Water Datum (MLLW).
Datum Relationships for gage 73550 as of December 2013:
0.0' NAVD88 (OPUS 2010) = 0.6' MLLW = 1.6' MLG or 0.0' MLLW = 1.0' MLG

Distances on the Calcasieu River are shown at 1 mile intervals.

The location of navigation aids are base on and provided by the U.S. Coast Guard and USACE survey crews.

2015 Aerial Photography data source: NAIP
Reference is N.O.A.A. Navigation Chart No. 11339.

* Difference between high and low frequency elevations where greater than 1.0'.
** Shoalest Sounding per Quarter per Reach.
*** High frequency (200 kHz) survey data represents the first signal return at a sounding location and will include suspended solids, known as "fluff", if present. Low frequency (20 kHz) survey data normally penetrates through this "fluff" layer to depict elevations of consolidated bottom material. Low frequency accuracies may vary depending on channel conditions and fathometer settings.

**Sheet Reference Number
2 of 53**