

**DISTRIBUTION:** The United States Government furnishes these data and the recipient accepts and uses them with the express understanding that the data are not to be used for any purpose other than that for which they were originally intended. The user is responsible for the results of any use of the data for other than the intended purpose.

**Access Constraints:** The United States Government furnishes these data and the recipient accepts and uses them with the express understanding that the data are not to be used for any purpose other than that for which they were originally intended. The user is responsible for the results of any use of the data for other than the intended purpose.

**Vertical Datum:** Soundings are shown in feet and indicate depths below Mean Lower Low Water Datum (MLLW). Datum Relationships for gage 73550 as of December 2013: 0.0' NAVD83 (OPUS 2010) = 0.6' MLLW = 1.6' MLG or 0.0' MLLW = 1.0' MLG

**Distances on the Calcasieu River** are shown at 1 mile intervals.

The location of navigation aids are based on and provided by the U.S. Coast Guard and USACE survey crews.

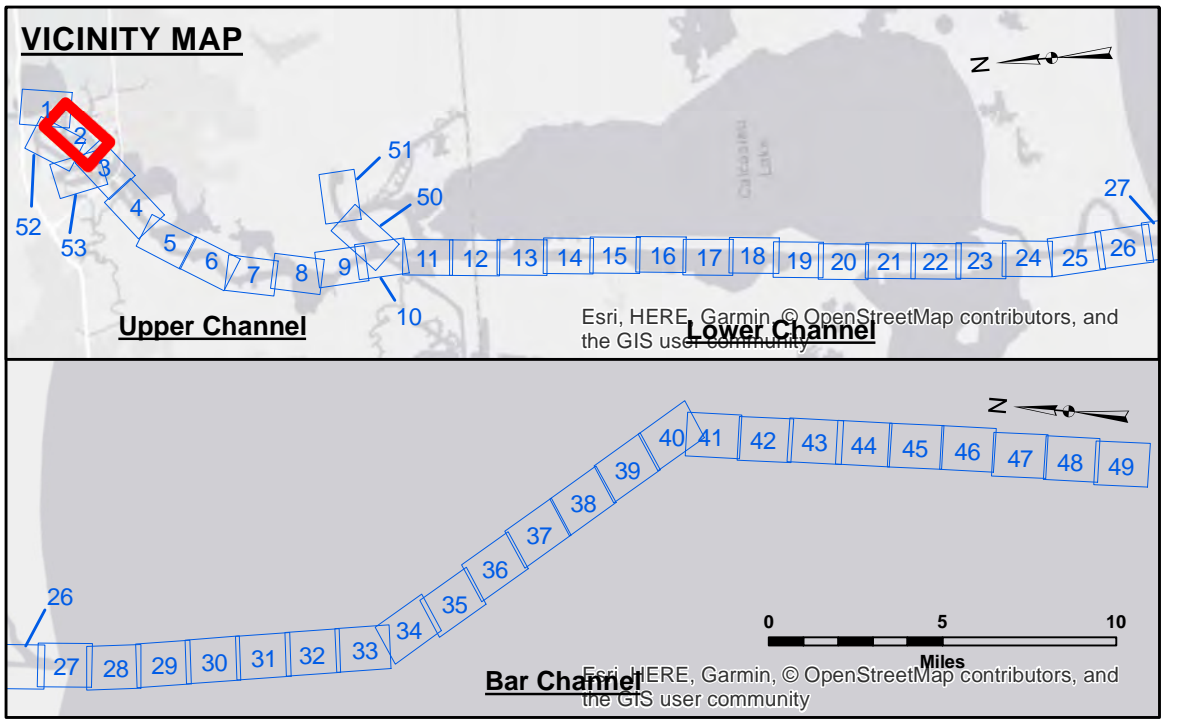
2015 Aerial Photography data source: NAIP  
Reference is N.O.A.A. Navigation Chart No. 11339.

\* Difference between high and low frequency elevations where greater than 1.0'.  
\*\* Shoalest Sounding per Quarter per Reach.

\*\*\* High frequency (200 kHz) survey data represents the first signal return at a sounding location and will include suspended solids, known as "fluff", if present. Low frequency (20 kHz) survey data normally penetrates through this "fluff" layer to depict elevations of consolidated bottom material. Low frequency accuracies may vary depending on channel conditions and fathometer settings.

U.S. ARMY CORPS OF ENGINEERS NEW ORLEANS DISTRICT		
Surveyed By: RYLAND/ADAMS	Plotted By: BD	Checked By: AC
Submitted:	Chart Survey Section	Chart, Waterways Maintenance Section

**CALCASIEU SHIP CHANNEL  
UPPER SHEET 2  
CR\_02\_UPR\_20190522\_CS  
22 May 2019**



**LEGEND**

--- Federal Navigation Channel	○ Cable Area	3 Fluff Thickness (feet)*	-16' and above
— Federal Navigation Center Line	□ Placement Area	● Shoalest Sounding**	-16' to -21'
— As-built Pipeline/Cable	⊗ Anchorage Area	☆ Beacon, General	-21' to -26'
..... Unconfirmed Pipeline/Cable	⊗ Obstruction Point	◆ Red Navigation Buoy	-26' to -33'
— Project Depth Contour	⊗ Wrecks-Submerged	◆ Green Navigation Buoy	-33' to -39'
			-39' to -41'
			-41' to -43'
			-43' and below

**Gage Reading:** LAKE CHARLES: 2.87 MLLW AVG.  
**Sea Conditions:** CHOPPY  
**Vessel Name:** OB-189  
**Survey Type:** CONDITION  
**Sounding Frequency\*\*\*:** LOW

North Arrow

Scale: 0 400 800 1,200 1,600 Feet

**NOTES:**  
 Horizontal Coordinate System:  
 North American Datum of 1983 (NAD83), projected to the State Plane Coordinate System (SPCS), Louisiana South Zone. Distance units in U.S. Survey Feet.

Vertical Datum:  
 Soundings are shown in feet and indicate depths below Mean Lower Low Water Datum (MLLW). Datum Relationships for gage 73550 as of December 2013: 0.0' NAVD83 (OPUS 2010) = 0.6' MLLW = 1.6' MLG or 0.0' MLLW = 1.0' MLG

Distances on the Calcasieu River are shown at 1 mile intervals.

The location of navigation aids are based on and provided by the U.S. Coast Guard and USACE survey crews.

2015 Aerial Photography data source: NAIP  
 Reference is N.O.A.A. Navigation Chart No. 11339.

\* Difference between high and low frequency elevations where greater than 1.0'.  
 \*\* Shoalest Sounding per Quarter per Reach.  
 \*\*\* High frequency (200 kHz) survey data represents the first signal return at a sounding location and will include suspended solids, known as "fluff", if present. Low frequency (20 kHz) survey data normally penetrates through this "fluff" layer to depict elevations of consolidated bottom material. Low frequency accuracies may vary depending on channel conditions and fathometer settings.

**Sheet Reference Number  
2 of 53**