

**DISPOSAL AREA 4**

**DISPOSAL AREA 1**

PORT OF LAKE CHARLES (0.0' GAGE DATUM)

MV BIENVILLE

CORPS CRANE BARGES

DIVER

LIGHT 120

LIGHT 118

Sheet 1

Sheet 3

Sheet 2

Sheet 4

Sheet 5

Sheet 6

Sheet 7

Sheet 8

Sheet 9

Sheet 10

Sheet 11

Sheet 12

Sheet 13

Sheet 14

Sheet 15

Sheet 16

Sheet 17

Sheet 18

Sheet 19

Sheet 20

Sheet 21

Sheet 22

Sheet 23

Sheet 24

Sheet 25

Sheet 26

Sheet 27

Sheet 28

Sheet 29

Sheet 30

Sheet 31

Sheet 32

Sheet 33

Sheet 34

Sheet 35

Sheet 36

Sheet 37

Sheet 38

Sheet 39

Sheet 40

Sheet 41

Sheet 42

Sheet 43

Sheet 44

Sheet 45

Sheet 46

Sheet 47

Sheet 48

Sheet 49

Sheet 50

Sheet 51

Sheet 52

Sheet 53

Sheet 54

Sheet 55

Sheet 56

Sheet 57

Sheet 58

Sheet 59

Sheet 60

Sheet 61

Sheet 62

Sheet 63

Sheet 64

Sheet 65

Sheet 66

Sheet 67

Sheet 68

Sheet 69

Sheet 70

Sheet 71

Sheet 72

Sheet 73

Sheet 74

Sheet 75

Sheet 76

Sheet 77

Sheet 78

Sheet 79

Sheet 80

Sheet 81

Sheet 82

Sheet 83

Sheet 84

Sheet 85

Sheet 86

Sheet 87

Sheet 88

Sheet 89

Sheet 90

Sheet 91

Sheet 92

Sheet 93

Sheet 94

Sheet 95

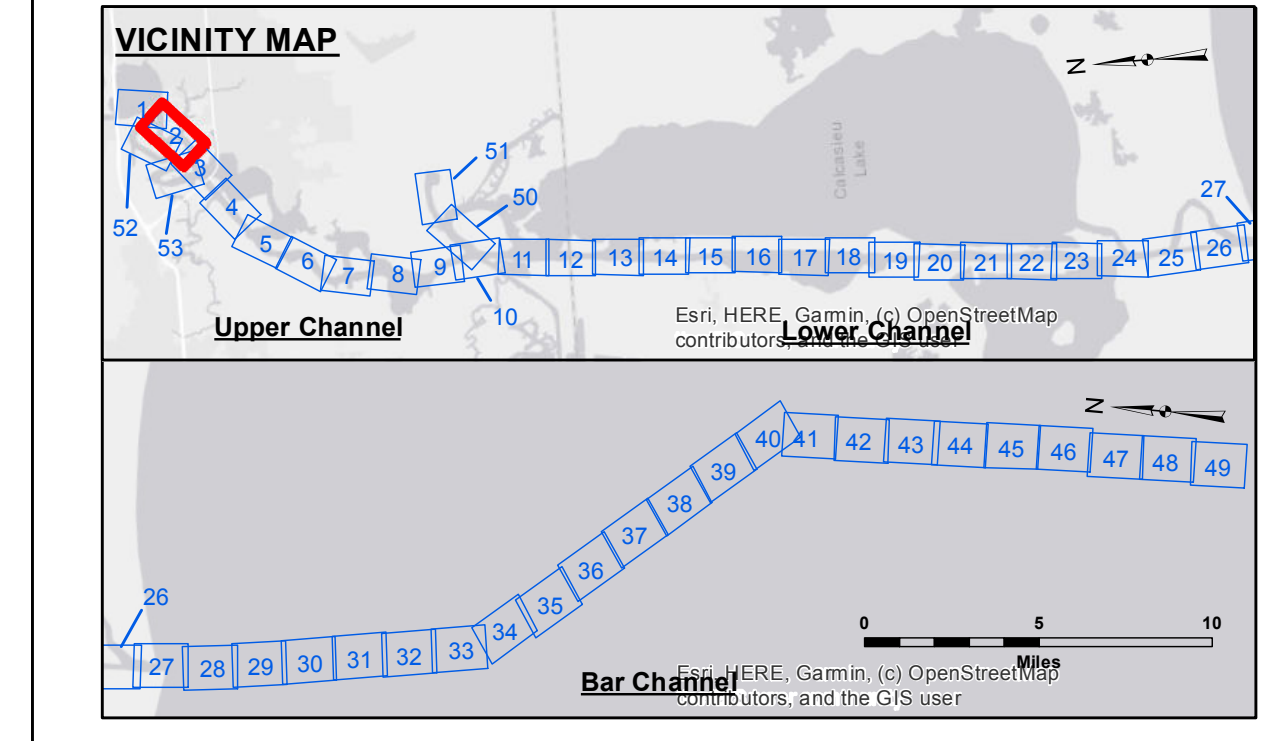
Sheet 96

Sheet 97

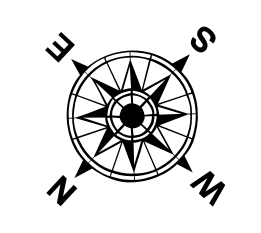
Sheet 98

Sheet 99

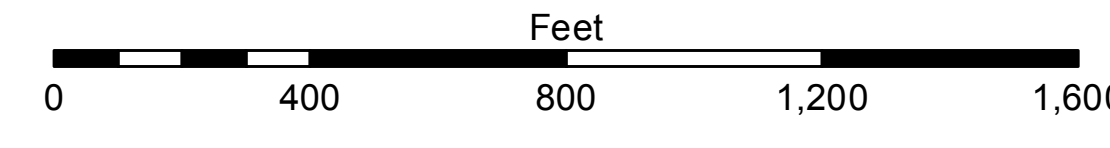
Sheet 100



LEGEND			
--- Federal Navigation Channel	○ Cable Area	3 Fluff Thickness (feet)*	-16' and above
— Federal Navigation Center Line	□ Placement Area	● Shoalest Sounding**	-16' to -21'
— As-built Pipeline/Cable	⊗ Anchorage Area	★ Beacon, General	-21' to -26'
..... Unconfirmed Pipeline/Cable	⊗ Obstruction Point	◆ Red Navigation Buoy	-26' to -33'
— Project Depth Contour	⊗ Wrecks-Submerged	◆ Green Navigation Buoy	-33' to -39'
			-39' to -41'
			-41' to -43'
			-43' and below



Gage Reading: VRS RTK: 0.46 MLLW AVG.  
 Sea Conditions: CHOPPY  
 Vessel Name: OB-167  
 Survey Type: CONDITION  
 Sounding Frequency\*\*\*: LOW



**NOTES:**  
 Horizontal Coordinate System:  
 North American Datum of 1983 (NAD83), projected to the State Plane  
 Coordinate System (SPCS), Louisiana South Zone. Distance units in U.S. Survey Feet.  
 Vertical Datum:  
 Soundings are shown in feet and indicate depths below Mean Lower Low Water Datum (MLLW).  
 Datum Relationships for gage 73550 as of December 2013:  
 0.0' NAVD83 (OPUS 2010) = 0.6' MLLW = 1.6' MLG or 0.0' MLLW = 1.0' MLG  
 Distances on the Calcasieu River are shown at 1 mile intervals.  
 The location of navigation aids are base on and provided by the U.S. Coast Guard  
 and USACE survey crews.  
 2015 Aerial Photography data source: NAIP  
 Reference is N.O.A. Navigation Chart No. 11339.  
 \* Difference between high and low frequency elevations where greater than 1.0'.  
 \*\* Shoalest Sounding per Quarter per Reach.  
 \*\*\* High frequency (200 kHz) survey data represents the first signal return at a sounding  
 location and will include suspended solids, known as "fluff", if present. Low frequency (20 kHz)  
 survey data normally penetrates through this "fluff" layer to depict elevations of consolidated  
 material. Low frequency accuracies may vary depending on channel conditions and fathometer  
 settings.

U.S. ARMY CORPS OF ENGINEERS NEW ORLEANS DISTRICT			
Submitted:	Surveyed By: SPPM	Plotted By: BD	Checked By: AC
Recommender:	Chief, Survey Section		Chief, Waterways Maintenance Section
Approved:			

**CALCASIEU SHIP CHANNEL  
 UPPER SHEET 2  
 CR\_02\_UPR\_20210127\_CS  
 27 January 2021**

**Sheet  
 Reference  
 Number  
 2 of 53**