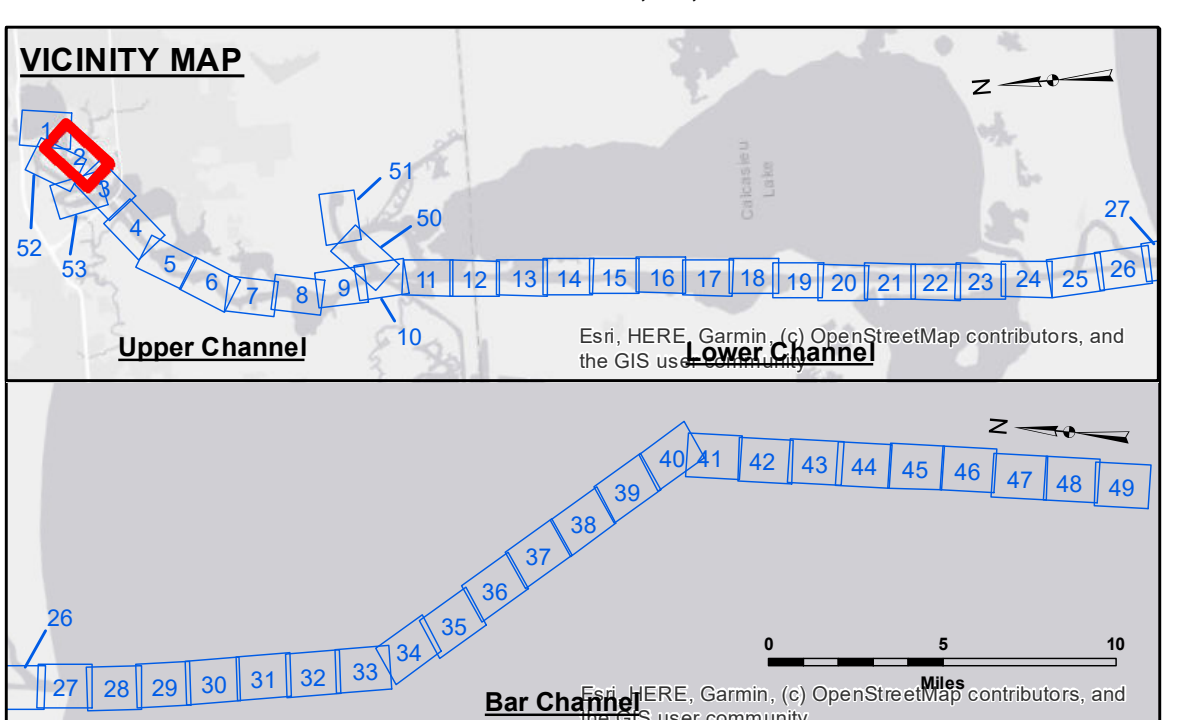


DISCLAIMER
The United States Government furnishes these data and the recipient accepts and uses them with the express understanding that the data are not to be used for any purpose other than that for which they were originally prepared, and that the data are not to be used for any purpose other than that for which they were originally prepared, and that the data are not to be used for any purpose other than that for which they were originally prepared.

U.S. ARMY CORPS OF ENGINEERS NEW ORLEANS DISTRICT		
Submitted:	Surveyed By: SP-JS	Plotted By: BD
Recommended:	Checked By: AD/JH	Checked By: AD/JH
Approved:	Chief, Waterways Maintenance Section	

**CALCASIEU SHIP CHANNEL
UPPER SHEET 2
CR_02_UPR_20240521_CS
21 May 2024**



LEGEND

--- Federal Navigation Channel	○ Cable Area	3 Fluff Thickness (feet)*	-16' and above
— Federal Navigation Center Line	□ Placement Area	● Shoalest Sounding**	-16' to -21'
— As-built Pipeline/Cable	⊗ Anchorage Area	★ Beacon, General	-21' to -26'
..... Unconfirmed Pipeline/Cable	⊗ Obstruction Point	◆ Red Navigation Buoy	-26' to -33'
— Project Depth Contour	⊗ Wrecks-Submerged	◆ Green Navigation Buoy	-33' to -39'
			-39' to -41'
			-41' to -43'
			-43' and below

NOTES:
Horizontal Coordinate System:
North American Datum of 1983 (NAD83), projected to the State Plane Coordinate System (SPCS), Louisiana South Zone. Distance units in U.S. Survey Feet.

Vertical Datum:
Soundings are shown in feet and indicate depths below Mean Lower Low Water Datum (MLLW).
Datum Relationships for gage 73550 as of December 2013:
0.0' NAVD83 (OPUS 2010) = 0.6' MLLW = 1.6' MLG or 0.0' MLLW = 1.0' MLG

Distances on the Calcasieu River are shown at 1 mile intervals.

The location of navigation aids are base on and provided by the U.S. Coast Guard and USACE survey crews.

2022 Aerial Photography data source: PAR LLC
Reference is N.O.A. Navigation Chart No. 11339.
* Difference between high and low frequency elevations where greater than 1.0'.
** Shoalest Sounding per Quarter per Reach.

**DM 114 VRN: 2.59 MLLW AVG.
CHOPPY
M/V TECHE
CONDITION
LOW**

**Gage Reading:
Sea Conditions:
Vessel Name:
Survey Type:
Sounding Frequency***: LOW**

Scale: 0 400 800 1,200 1,600 Feet

**Sheet Reference Number
2 of 53**