

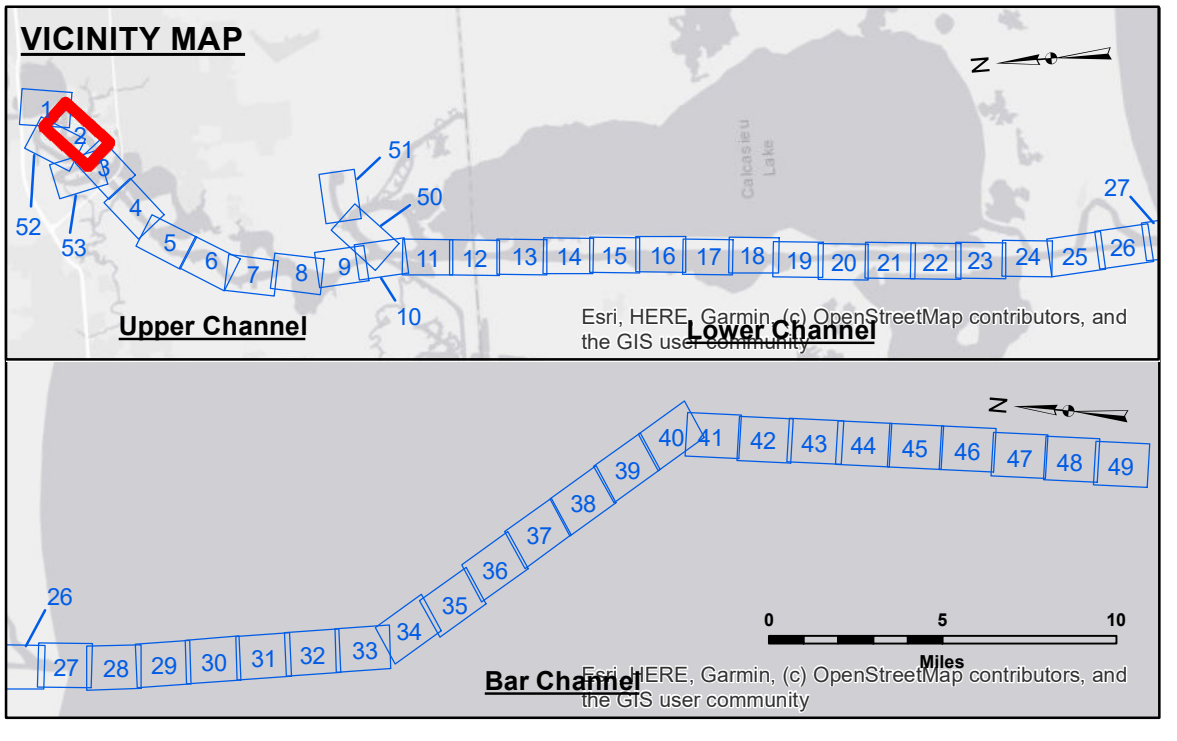
DISCLAIMER
The United States Government furnishes these data and the recipient accepts and uses them with the express understanding that the data are not to be used for any purpose other than that for which they were originally collected, and that the user is responsible for the results of any use of the data for other than the intended purpose.
The information depicted on this map represents the results of a survey conducted on or about the date of the survey. The user is responsible for the results of any use of the data for other than the intended purpose.
The information depicted on this map represents the results of a survey conducted on or about the date of the survey. The user is responsible for the results of any use of the data for other than the intended purpose.

Submitted:	Surveyed By: SP-JS
Recommended:	Plotted By: JH
Approved:	Checked By: JH

U.S. ARMY CORPS OF ENGINEERS
NEW ORLEANS DISTRICT
Chart, Survey Section
Chart, Waterways Maintenance Section

**CALCASIEU SHIP CHANNEL
UPPER SHEET 2
CR_02_UPR_20240828_CS
28 August 2024**

**Sheet Reference Number
2 of 53**



LEGEND	
--- Federal Navigation Channel	● Cable Area
— Federal Navigation Center Line	□ Placement Area
— As-built Pipeline/Cable	□ Anchorage Area
..... Unconfirmed Pipeline/Cable	⊗ Obstruction Point
— Project Depth Contour	⚓ Wrecks-Submerged
3 Fluff Thickness (feet)*	★ Beacon, General
● Shoalest Sounding**	◆ Red Navigation Buoy
● Green Navigation Buoy	◆ Green Navigation Buoy

NOTES:
Horizontal Coordinate System: North American Datum of 1983 (NAD83), projected to the State Plane Coordinate System (SPCS), Louisiana South Zone. Distance units in U.S. Survey Feet.
Vertical Datum: Soundings are shown in feet and indicate depths below Mean Lower Low Water Datum (MLLW). Datum Relationships for gage 73550 as of December 2013: 0.0' NAVD83 (OPUS 2010) = 0.6' MLLW = 1.6' MLG or 0.0' MLLW = 1.0' MLG
Distances on the Calcasieu River are shown at 1 mile intervals.
The location of navigation aids are base on and provided by the U.S. Coast Guard and USACE survey crews.
2022 Aerial Photography data source: PAR LLC
Reference is N.O.A. Navigation Chart No. 11339.
* Difference between high and low frequency elevations where greater than 1.0'.
** Shoalest Sounding per Quarter per Reach.
*** High frequency (200 kHz) survey data represents the first signal return at a sounding location and will include suspended solids, known as "fluff", if present. Low frequency (20 kHz) survey data normally penetrates through this "fluff" layer to depict elevations of consolidated bottom material. Low frequency accuracies may vary depending on channel conditions and fathometer settings.

Gage Reading: DM119 VRN: 1.55 MLLW AVG
Sea Conditions: CALM
Vessel Name: MV TECHE
Survey Type: CONDITION
Sounding Frequency***: LOW