

DISPOSAL AREA 4

DISPOSAL AREA 1

DISPOSAL AREA 2

DISPOSAL AREA 3

DISPOSAL AREA 5

DISPOSAL AREA 6

DISPOSAL AREA 7

DISPOSAL AREA 8

DISPOSAL AREA 9

DISPOSAL AREA 10

DISPOSAL AREA 11

DISPOSAL AREA 12

DISPOSAL AREA 13

DISPOSAL AREA 14

DISPOSAL AREA 15

DISPOSAL AREA 16

DISPOSAL AREA 17

DISPOSAL AREA 18

DISPOSAL AREA 19

DISPOSAL AREA 20

DISPOSAL AREA 21

DISPOSAL AREA 22

DISPOSAL AREA 23

DISPOSAL AREA 24

DISPOSAL AREA 25

DISPOSAL AREA 26

DISPOSAL AREA 27

DISPOSAL AREA 28

DISPOSAL AREA 29

DISPOSAL AREA 30

DISPOSAL AREA 31

DISPOSAL AREA 32

DISPOSAL AREA 33

DISPOSAL AREA 34

DISPOSAL AREA 35

DISPOSAL AREA 36

DISPOSAL AREA 37

DISPOSAL AREA 38

DISPOSAL AREA 39

DISPOSAL AREA 40

DISPOSAL AREA 41

DISPOSAL AREA 42

DISPOSAL AREA 43

DISPOSAL AREA 44

DISPOSAL AREA 45

DISPOSAL AREA 46

DISPOSAL AREA 47

DISPOSAL AREA 48

DISPOSAL AREA 49

DISPOSAL AREA 50

DISPOSAL AREA 51

DISPOSAL AREA 52

DISPOSAL AREA 53

DISPOSAL AREA 54

DISPOSAL AREA 55

DISPOSAL AREA 56

DISPOSAL AREA 57

DISPOSAL AREA 58

DISPOSAL AREA 59

DISPOSAL AREA 60

DISPOSAL AREA 61

DISPOSAL AREA 62

DISPOSAL AREA 63

DISPOSAL AREA 64

DISPOSAL AREA 65

DISPOSAL AREA 66

DISPOSAL AREA 67

DISPOSAL AREA 68

DISPOSAL AREA 69

DISPOSAL AREA 70

DISPOSAL AREA 71

DISPOSAL AREA 72

DISPOSAL AREA 73

DISPOSAL AREA 74

DISPOSAL AREA 75

DISPOSAL AREA 76

DISPOSAL AREA 77

DISPOSAL AREA 78

DISPOSAL AREA 79

DISPOSAL AREA 80

DISPOSAL AREA 81

DISPOSAL AREA 82

DISPOSAL AREA 83

DISPOSAL AREA 84

DISPOSAL AREA 85

DISPOSAL AREA 86

DISPOSAL AREA 87

DISPOSAL AREA 88

DISPOSAL AREA 89

DISPOSAL AREA 90

DISPOSAL AREA 91

DISPOSAL AREA 92

DISPOSAL AREA 93

DISPOSAL AREA 94

DISPOSAL AREA 95

DISPOSAL AREA 96

DISPOSAL AREA 97

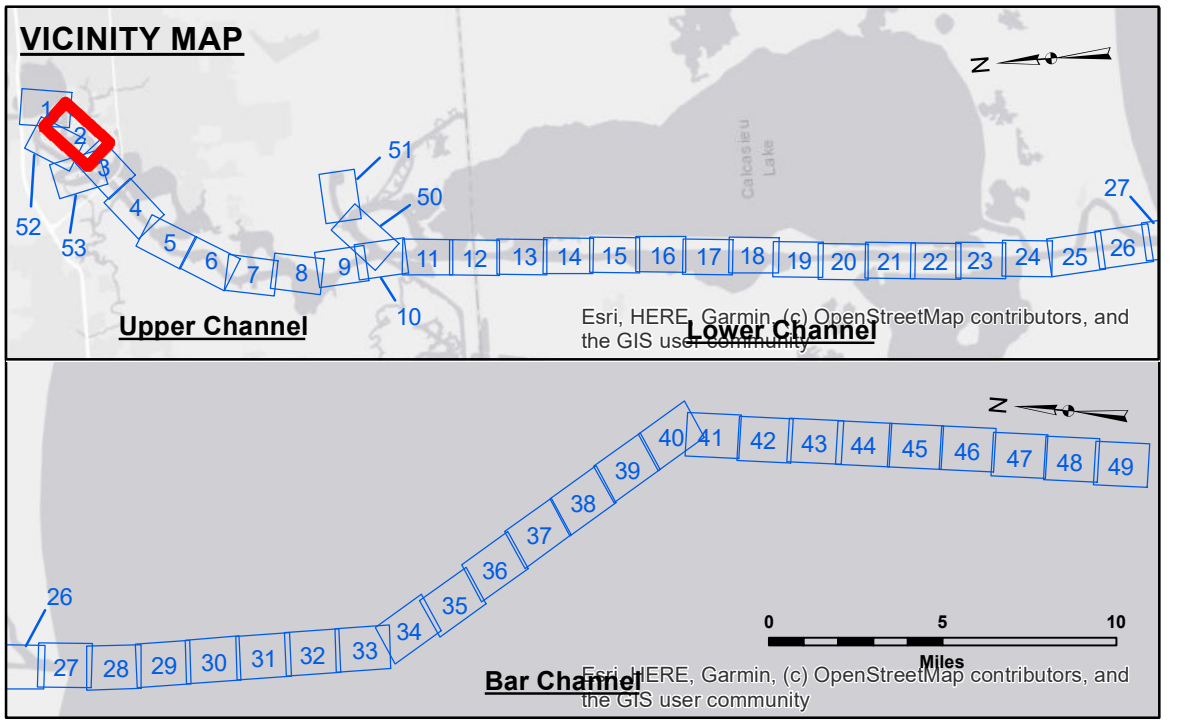
DISPOSAL AREA 98

DISPOSAL AREA 99

DISPOSAL AREA 100

U.S. ARMY CORPS OF ENGINEERS NEW ORLEANS DISTRICT	
Submitted:	Surveyed By: SP-JS
Recommended:	Plotted By: BD
Approved:	Checked By: AD/JH
Sheet: Survey Section	
Chert, Waterways Maintenance Section	

**CALCASIEU SHIP CHANNEL
UPPER SHEET 2
CR_02_UPR_20241104_CS
04 November 2024**



LEGEND	
--- Federal Navigation Channel	○ Cable Area
— Federal Navigation Center Line	□ Placement Area
— As-built Pipeline/Cable	□ Anchorage Area
..... Unconfirmed Pipeline/Cable	⊗ Obstruction Point
— Project Depth Contour	⚓ Wrecks-Submerged
3 Fluff Thickness (feet)*	★ Beacon, General
● Shoalest Sounding**	◆ Red Navigation Buoy
○ Green Navigation Buoy	

NOTES:

Horizontal Coordinate System:
North American Datum of 1983 (NAD83), projected to the State Plane Coordinate System (SPCS), Louisiana South Zone. Distance units in U.S. Survey Feet.

Vertical Datum:
Soundings are shown in feet and indicate depths below Mean Lower Low Water Datum (MLLW).
Datum Relationships for gage 73550 as of December 2013:
0.0' NAVD83 (OPUS 2010) = 0.6' MLLW = 1.6' MLG or 0.0' MLLW = 1.0' MLG

Distances on the Calcasieu River are shown at 1 mile intervals.

The location of navigation aids are base on and provided by the U.S. Coast Guard and USACE survey crews.

2022 Aerial Photography data source: PAR LLC
Reference is N.O.A. Navigation Chart No. 11339.

* Difference between high and low frequency elevations where greater than 1.0'.
** Shoalest Sounding per Quarter per Reach.

*** High frequency (200 kHz) survey data represents the first signal return at a sounding location and will include suspended solids, known as "fluff", if present. Low frequency (20 kHz) survey data normally penetrates through this "fluff" layer to depict elevations of consolidated bottom material. Low frequency accuracies may vary depending on channel conditions and fathometer settings.

Gage Reading: DM 119 VRN: 2.69 MLLW AVG.
Sea Conditions: CHOPPY
Vessel Name: MV TECHE
Survey Type: CONDITION
Sounding Frequency***: LOW

**Sheet Reference Number
2 of 53**

Revision Number:
4-2-2024(04/24)