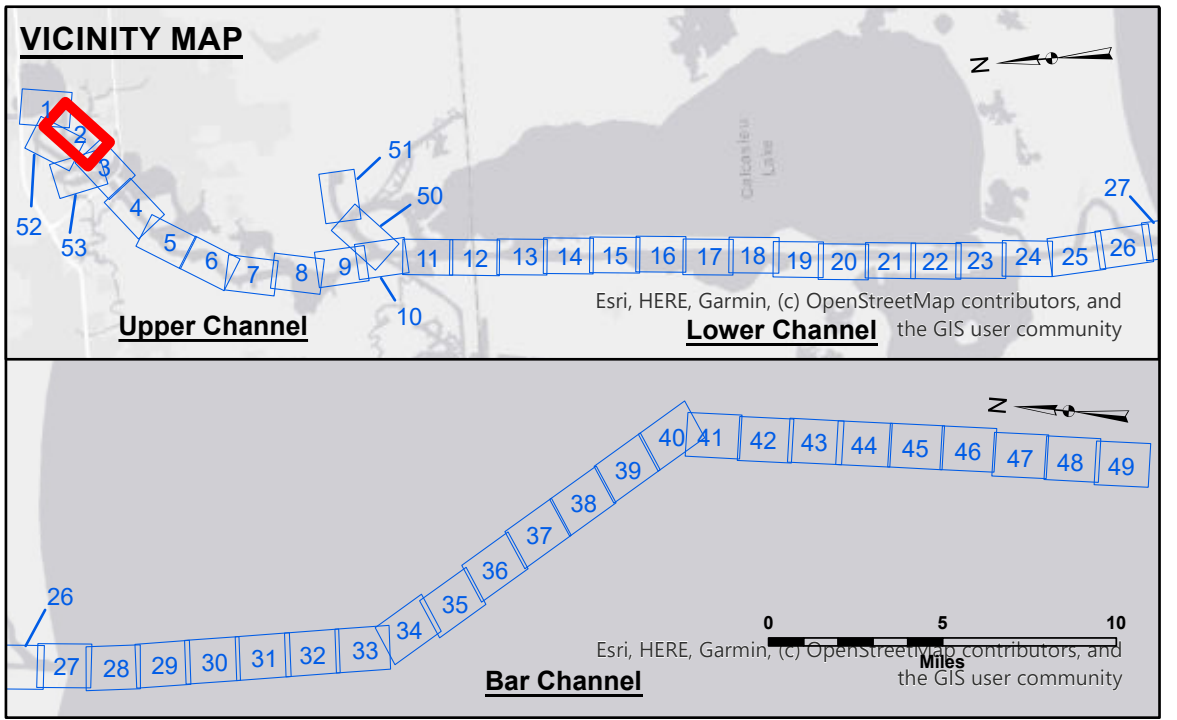


DISCLAIMER: The data represents the results of data collection/processing for a specific US Army Corps of Engineers activity and indicates the general existing conditions. As such, the user is responsible for the results of any application of the data for other than its intended purpose. This data is intended for U.S. Army Corps of Engineers internal use. Present insurance should not be relied upon for any other purpose.

DISCLAIMER: The United States Government furnishes these data and the recipient accepts and uses them with the express understanding that the data are not to be used for any purpose other than that for which they were prepared. The recipient agrees not to represent these data to anyone as other than Government provided data. The recipient may not transfer these data to others without also transferring the disclaimer. The information depicted on this map represents the results of a survey conducted on or about the date shown on the map. It is not to be considered to represent the general condition existing at that time.

U.S. ARMY CORPS OF ENGINEERS	
Submitted:	Surveyed By: SP/JS
Recommended:	Plotted By: BID
Approved:	Checked By: AO/JH

**CALCASIEU SHIP CHANNEL
UPPER SHEET 2
CR_02_UPR_20250403_CS
03 April 2025**



LEGEND	
--- Federal Navigation Channel	○ Cable Area
— Federal Navigation Center Line	□ Placement Area
— As-built Pipeline/Cable	⊗ Obstruction Point
..... Unconfirmed Pipeline/Cable	⚓ Wrecks-Submerged
— Project Depth Contour	☆ Beacon, General
3 Fluff Thickness (feet)*	◆ Red Navigation Buoy
● Shoalest Sounding**	◆ Green Navigation Buoy
■ -16' and above	
■ -16' to -21'	
■ -21' to -26'	
■ -26' to -33'	
■ -33' to -39'	
■ -39' to -41'	
■ -41' to -43'	
■ -43' and below	

Gage Reading: DM 119 VRN: 2.3 MLLW AVG.
 Sea Conditions: CHOPPY
 Vessel Name: MV TECHE
 Survey Type: CONDITION
 Sounding Frequency***: LOW

NOTES:
 Horizontal Coordinate System: North American Datum of 1983 (NAD83), projected to the State Plane Coordinate System (SPCS), Louisiana South Zone. Distance units in U.S. Survey Feet.
 Vertical Datum: Soundings are shown in feet and indicate depths below Mean Lower Low Water Datum (MLLW). Datum Relationships for gage 73550 as of December 2013: 0.0' NAVD83 (OPUS 2010) = 0.6' MLLW = 1.6' MLG or 0.0' MLLW = 1.0' MLG
 Distances on the Calcasieu River are shown at 1 mile intervals.
 The location of navigation aids are base on and provided by the U.S. Coast Guard and USACE survey crews.
 2022 Aerial Photography data source: PAR LLC
 Reference is N.O.A. Navigation Chart No. 11339.
 * Difference between high and low frequency elevations where greater than 1.0'.
 ** Shoalest Sounding per Quarter per Reach.
 *** High frequency (200 kHz) survey data represents the first signal return at a sounding location and will include suspended solids, known as "fluff", if present. Low frequency (20 kHz) survey data normally penetrates through this "fluff" layer to depict elevations of consolidated bottom material. Low frequency accuracies may vary depending on channel conditions and fathometer settings.

**Sheet Reference Number
2 of 53**