

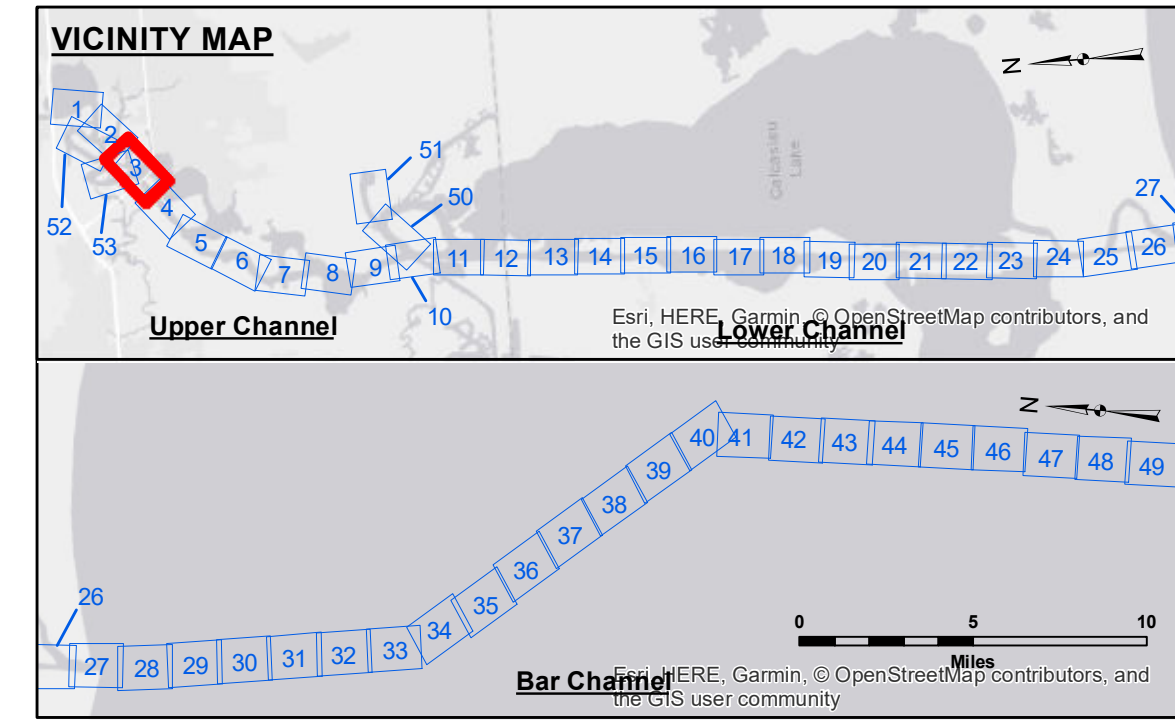
**DISCLAIMER**  
 The information depicted on this map represents the results of a hydrographic survey conducted by the U.S. Army Corps of Engineers. The user is responsible for the accuracy, completeness, and timeliness of the data and for its use. The Corps of Engineers does not warrant the accuracy, completeness, or timeliness of the data and does not assume any liability for its use. The Corps of Engineers does not accept any responsibility for changes in the hydrographic conditions which develop after the date of the survey. The Corps of Engineers does not accept any responsibility for the use of the data for purposes not intended by the Corps of Engineers. The Corps of Engineers does not accept any responsibility for the use of the data for purposes not intended by the Corps of Engineers. The Corps of Engineers does not accept any responsibility for the use of the data for purposes not intended by the Corps of Engineers.

**ACCESS RESTRICTIONS**  
 The United States Government furnishes this data and the recipient accepts and uses them with the express understanding that the data are not to be used for any purpose other than that for which they were originally intended. The user is responsible for the accuracy, completeness, and timeliness of the data and for its use. The Corps of Engineers does not warrant the accuracy, completeness, or timeliness of the data and does not assume any liability for its use. The Corps of Engineers does not accept any responsibility for changes in the hydrographic conditions which develop after the date of the survey. The Corps of Engineers does not accept any responsibility for the use of the data for purposes not intended by the Corps of Engineers. The Corps of Engineers does not accept any responsibility for the use of the data for purposes not intended by the Corps of Engineers. The Corps of Engineers does not accept any responsibility for the use of the data for purposes not intended by the Corps of Engineers.

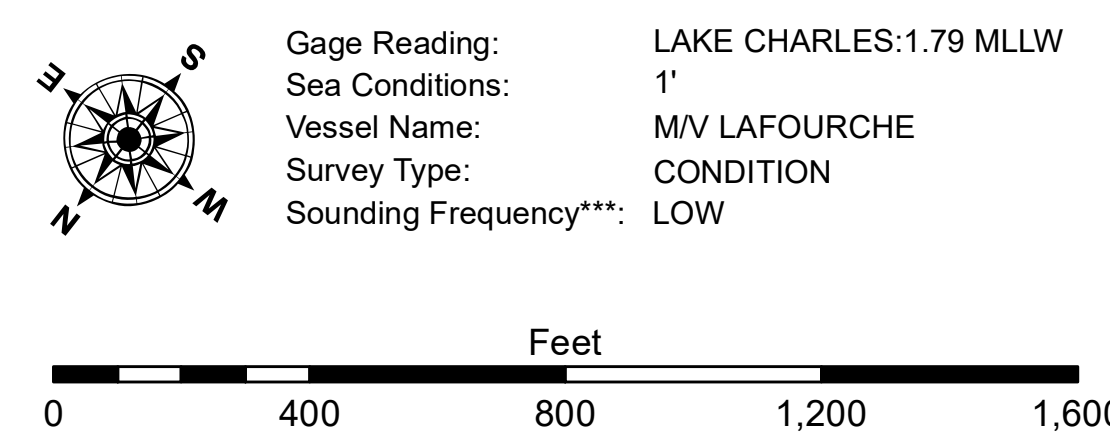
Submitted:	Surveyed By: SPS JH
Recommended:	Plotted By: BD
Approved:	Checked By: AC

U.S. ARMY CORPS OF ENGINEERS  
 NEW ORLEANS DISTRICT

**CALCASIEU SHIP CHANNEL**  
 UPPER SHEET 3  
 CR\_03\_UPR\_20180502\_CS  
 02 May 2018



LEGEND			
--- Federal Navigation Channel	○ Cable Area	3 Fluff Thickness (feet)*	-16' and above
— Federal Navigation Center Line	□ Placement Area	● Shoalest Sounding**	-16' to -21'
— As-built Pipeline/Cable	□ Anchorage Area	☆ Beacon, General	-21' to -26'
..... Unconfirmed Pipeline/Cable	⊗ Obstruction Point	◆ Red Navigation Buoy	-26' to -33'
— Project Depth Contour	⚓ Wrecks-Submerged	◆ Green Navigation Buoy	-33' to -39'
			-39' to -41'
			-41' to -43'
			-43' and below



**NOTES:**  
 Horizontal Coordinate System:  
 North American Datum of 1983 (NAD83), projected to the State Plane Coordinate System (SPCS), Louisiana South Zone. Distance units in U.S. Survey Feet.  
 Vertical Datum:  
 Soundings are shown in feet and indicate depths below Mean Lower Low Water Datum (MLLW). Datum Relationships for gage 73550 as of December 2013:  
 0.0' NAVD86 (OPUS 2010) = 0.6' MLLW = 1.6' MLG or 0.0' MLLW = 1.0' MLG  
 Distances on the Calcasieu River are shown at 1 mile intervals.  
 The location of navigation aids are based on and provided by the U.S. Coast Guard and USACE survey crews.  
 2015 Aerial Photography data source: NAIP  
 Reference is N.O.A.A. Navigation Chart No. 11339.  
 \* Difference between high and low frequency elevations where greater than 1.0'.  
 \*\* Shoalest Sounding per Quarter per Reach.  
 \*\*\* High frequency (200 kHz) survey data represents the first signal return at a sounding location and will include suspended solids, known as "fluff", if present. Low frequency (20 kHz) survey data normally penetrates through this "fluff" layer to depict elevations of consolidated bottom material. Low frequency accuracies may vary depending on channel conditions and fathometer settings.

**Sheet Reference Number**  
 3 of 53  
 Revision Number:  
 3.13-20160811