

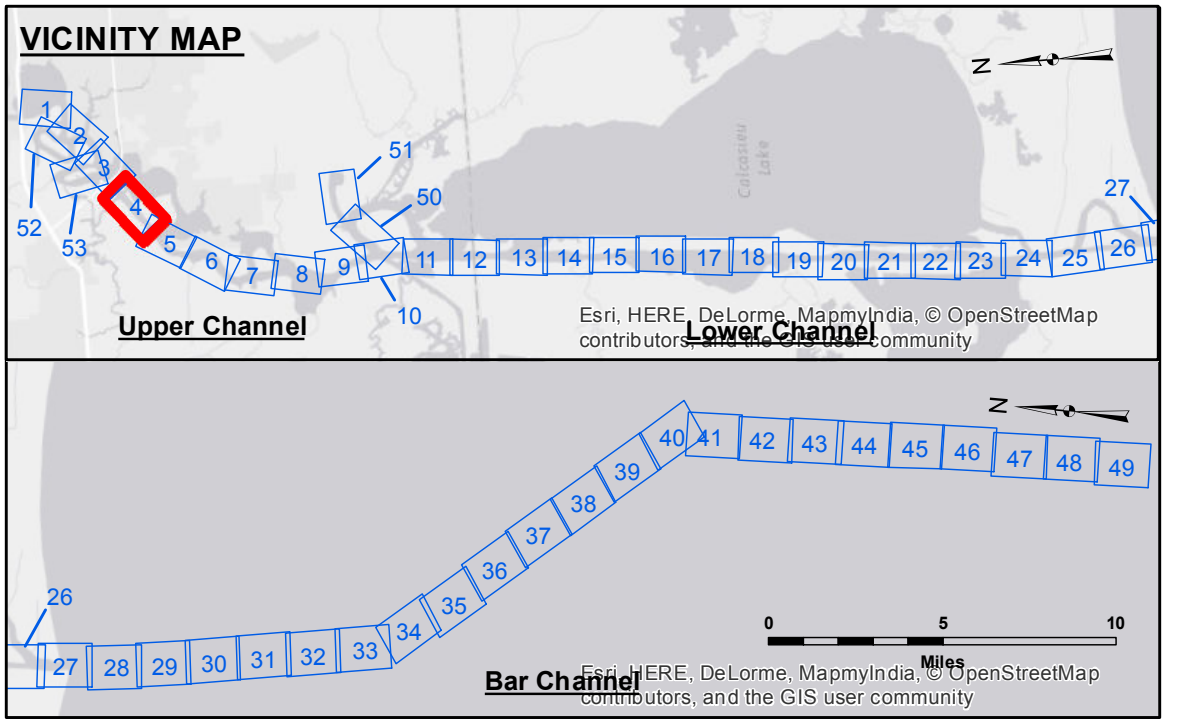
Accession: The United States Government furnishes these data and the recipient accepts and uses them with the express understanding that the data are not to be used for any purpose other than that for which they were originally prepared. The user is responsible for the results of any use of the data for other than its intended purpose.

Disclaimer: The information depicted on this map represents the results of a survey conducted by the United States Army Corps of Engineers. The Corps of Engineers does not warrant the accuracy of the data for any purpose other than that for which they were originally prepared. The Corps of Engineers does not accept responsibility for changes in the hydrographic conditions which develop after the date of the survey. The Corps of Engineers does not accept responsibility for changes in the hydrographic conditions which develop after the date of the survey. The Corps of Engineers does not accept responsibility for changes in the hydrographic conditions which develop after the date of the survey.

Submitted:	SR:JH
Reviewed:	BTD
Checked:	TAF

U.S. ARMY CORPS OF ENGINEERS
NEW ORLEANS DISTRICT

**CALCASIEU SHIP CHANNEL
UPPER SHEET 4
CR_04_UPR_20150729
29 July 2015**



LEGEND	
--- Federal Navigation Channel	● Cable Area
— Federal Navigation Center Line	□ Placement Area
— As-built Pipeline/Cable	□ Anchorage Area
..... Unconfirmed Pipeline/Cable	⊗ Obstruction Point
— Project Depth Contour	✈ Wrecks-Submerged
□ Borrow Area	★ Beacon, General
● Shoalest Sounding**	◆ Red Navigation Buoy
◆ Green Navigation Buoy	

NOTES:

Horizontal Coordinate System: North American Datum of 1983 (NAD83), projected to the State Plane Coordinate System (SPCS), Louisiana South Zone. Distance units in U.S. Survey Feet.

Vertical Datum: North American Datum of 1983 (NAD83), projected to the State Plane Coordinate System (SPCS), Louisiana South Zone. Distance units in U.S. Survey Feet.

Sounding Frequency***: LOW

DM 114: 2.0 MLG
CALM
MV TECHE
CONDITION

Scale: 0 400 800 1,200 1,600 Feet

NOTES:

Horizontal Coordinate System: North American Datum of 1983 (NAD83), projected to the State Plane Coordinate System (SPCS), Louisiana South Zone. Distance units in U.S. Survey Feet.

Vertical Datum: North American Datum of 1983 (NAD83), projected to the State Plane Coordinate System (SPCS), Louisiana South Zone. Distance units in U.S. Survey Feet.

Sounding Frequency***: LOW

DM 114: 2.0 MLG
CALM
MV TECHE
CONDITION

Scale: 0 400 800 1,200 1,600 Feet

Sheet Reference Number: 4 of 53

Revision Number: 3.8-0-20150729