

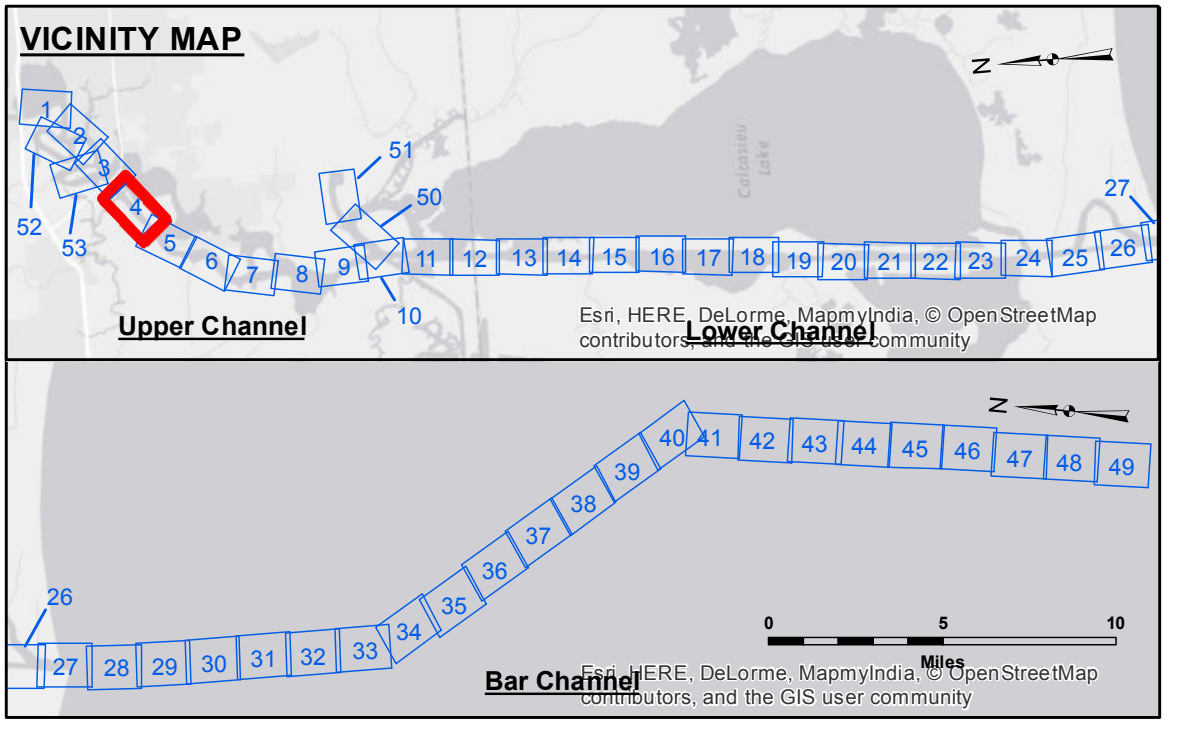
**Access/Use:** The United States Government furnishes these data and the recipient accepts and uses them with the express understanding that they are for informational purposes only and are not to be used for any purpose other than that for which they were prepared, or implied concerning the accuracy, completeness, reliability, usability or availability for any particular purpose of the recipient. The user is responsible for the results of any use of these data. These data are provided on an "as is" basis and the recipient accepts no responsibility for changes in the data or for any damage or loss resulting from the use of these data. The information depicted on this map represents the results of a survey conducted on or about the date of the survey and is not intended to represent the general condition existing at that time.

**Access/Use:** The United States Government furnishes these data and the recipient accepts and uses them with the express understanding that they are for informational purposes only and are not to be used for any purpose other than that for which they were prepared, or implied concerning the accuracy, completeness, reliability, usability or availability for any particular purpose of the recipient. The user is responsible for the results of any use of these data. These data are provided on an "as is" basis and the recipient accepts no responsibility for changes in the data or for any damage or loss resulting from the use of these data. The information depicted on this map represents the results of a survey conducted on or about the date of the survey and is not intended to represent the general condition existing at that time.

Submitted:	SR:JH
Reviewed:	AO
Checked:	TF

U.S. ARMY CORPS OF ENGINEERS  
NEW ORLEANS DISTRICT

**CALCASIEU SHIP CHANNEL  
UPPER SHEET 4  
CR\_04\_UPR\_20151110  
10 November 2015**



LEGEND	
--- Federal Navigation Channel	● Cable Area
— Federal Navigation Center Line	□ Placement Area
— As-built Pipeline/Cable	□ Anchorage Area
..... Unconfirmed Pipeline/Cable	⊗ Obstruction Point
— Project Depth Contour	⚓ Wrecks-Submerged
□ Borrow Area	★ Beacon, General
● Shoalest Sounding**	◆ Red Navigation Buoy
◆ Green Navigation Buoy	

**NOTES:**

Horizontal Coordinate System:  
North American Datum of 1983 (NAD83), projected to the State Plane Coordinate System (SPCS), Louisiana South Zone. Distance units in U.S. Survey Feet.

Vertical Datum:  
Soundings are shown in feet and indicate depths below Mean Low Gull Datum (MLG).  
Datum Relationships for gage 73565 as of December 2013:  
0.0' NAVD83 (OPUS 2013) = 0.6' MLLW = 1.6' MLG or 0.0' MLLW = 1.0' MLG

Distances on the Calcasieu River are shown at 1 mile intervals.

The location of navigation aids are based on and provided by the U.S. Coast Guard and USACE survey crews.

2010 Aerial Photography data source: NAIP  
Reference is N.O.A. Navigation Chart No. 11339.

\*\* Shoalest Sounding per Quarter per Reach.

\*\*\* High frequency (200 kHz) survey data represents the first signal return at a sounding location and will include suspended solids, known as "fluff", if present. Low frequency (20 kHz) survey data normally penetrates through this "fluff" layer to depict elevations of consolidated bottom material. Low frequency accuracies may vary depending on channel conditions and fathometer settings.

Gage Reading: DM 114: 2.2 MLG USED  
Sea Conditions: CALM  
Vessel Name: MV TECHE  
Survey Type: CONDITION  
Sounding Frequency\*\*\*: LOW

Feet  
0 400 800 1,200 1,600