

Access/Use: The United States Government furnishes these data and the recipient accepts and uses them with the express understanding that they are for informational purposes only. The data is not to be used for any purpose other than that for which it was collected. The user is responsible for the results of any use of the data. The user is not to be held liable for any damage or injury resulting from the use of the data. The user is not to be held liable for any damage or injury resulting from the use of the data.

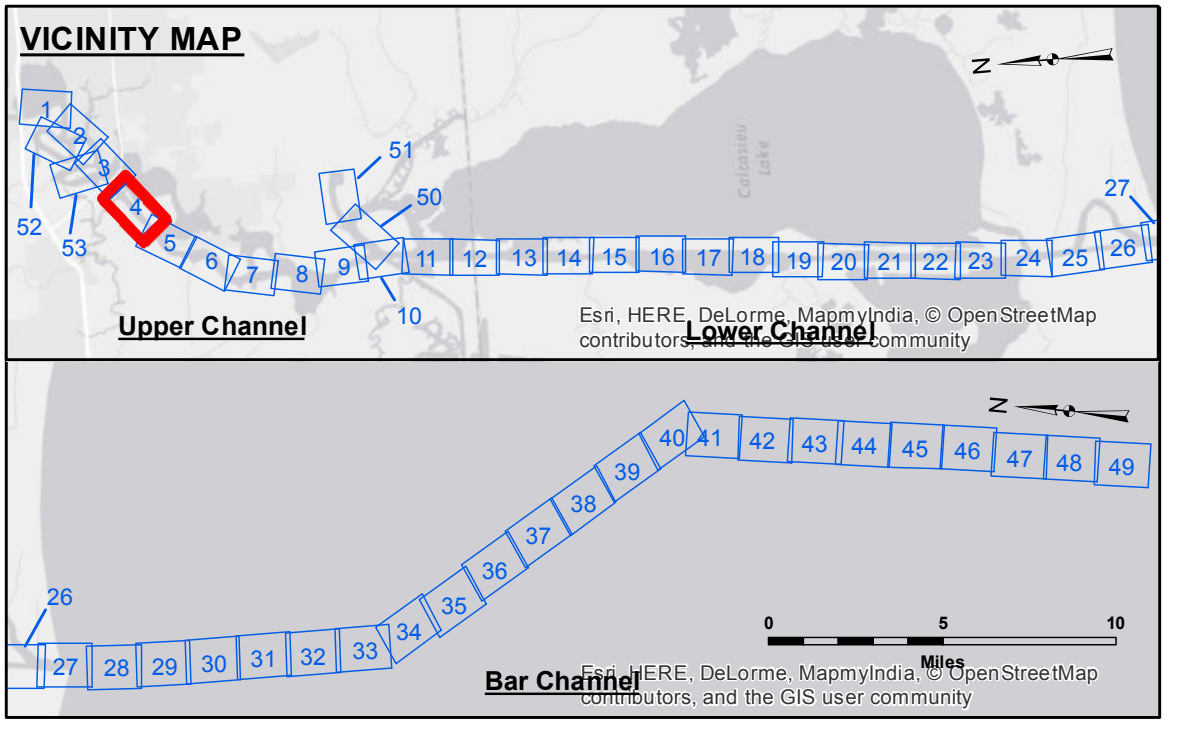
Access/Use: The data represents the results of data collection processing for a specific US Army Corps of Engineers project. The data is only valid for its intended use, control, time and accuracy specifications. The user is responsible for the results of any use of the data. The user is not to be held liable for any damage or injury resulting from the use of the data. The user is not to be held liable for any damage or injury resulting from the use of the data.

Access/Use: The data represents the results of data collection processing for a specific US Army Corps of Engineers project. The data is only valid for its intended use, control, time and accuracy specifications. The user is responsible for the results of any use of the data. The user is not to be held liable for any damage or injury resulting from the use of the data. The user is not to be held liable for any damage or injury resulting from the use of the data.

Submitted:	Surveyed By: JA, JH
Recommended:	Plotted By: BID
Approved:	Checked By: TAF

U.S. ARMY CORPS OF ENGINEERS
NEW ORLEANS DISTRICT

**CALCASIEU SHIP CHANNEL
UPPER SHEET 4
CR_04_UPR_20160121
21 January 2016**



LEGEND	
--- Federal Navigation Channel	● Cable Area
— Federal Navigation Center Line	□ Placement Area
— As-built Pipeline/Cable	□ Anchorage Area
..... Unconfirmed Pipeline/Cable	⊗ Obstruction Point
— Project Depth Contour	✈ Wrecks-Submerged
□ Borrow Area	★ Beacon, General
● Shoalest Sounding**	◆ Red Navigation Buoy
◆ Green Navigation Buoy	

■ -15' and above
■ -15' to -20'
■ -20' to -25'
■ -25' to -32'
■ -32' to -38'
■ -38' to -40'
■ -40' to -42'
■ -42' and below

Gage Reading: LAKE CHARLES: 1.50 MLG
Sea Conditions: CALM
Vessel Name: MV TECHE
Survey Type: CONDITION
Sounding Frequency***: LOW

Scale: 0 to 1,600 Feet

NOTES:
Horizontal Coordinate System: North American Datum of 1983 (NAD83), projected to the State Plane Coordinate System (SPCS), Louisiana South Zone. Distance units in U.S. Survey Feet.
Vertical Datum: Soundings are shown in feet and indicate depths below Mean Low Gull Datum (MLG). Datum Relationships for gage 73565 as of December 2013: 0.0' NAVD83 (OPUS 2013) = 0.6' MLLW = 1.6' MLG or 0.0' MLLW = 1.0' MLG
Distances on the Calcasieu River are shown at 1 mile intervals.
The location of navigation aids are based on and provided by the U.S. Coast Guard and USACE survey crews.
2010 Aerial Photography data source: NAIP
Reference is N.O.A. Navigation Chart No. 11339.
** Shoalest Sounding per Quarter per Reach.
*** High frequency (200 kHz) survey data represents the first signal return at a sounding location and will include suspended solids, known as "fluff", if present. Low frequency (20 kHz) survey data normally penetrates through this "fluff" layer to depict elevations of consolidated bottom material. Low frequency accuracies may vary depending on channel conditions and fathometer settings.

**Sheet Reference Number
4 of 53**

Revision Number: 3.8.9-20160202