

**Accession:** The United States Government furnishes these data and the recipient accepts and uses them with the express understanding that the data are not to be used for any purpose other than that for which they were originally collected, and that the user is responsible for the results of any use of the data for any other purpose.

**Distribution Liability:** The data represent the results of data collection for a specific US Army Corps of Engineers project and are not to be used for any other purpose. The user is responsible for the results of any use of the data for any other purpose.

**Data Accuracy:** Hydrographic survey data is subject to change rapidly due to several factors including, but not limited to, changing channel conditions, sedimentation, and changes in the hydrographic conditions which develop after the date of the survey. The user is responsible for the results of any use of the data for any other purpose.

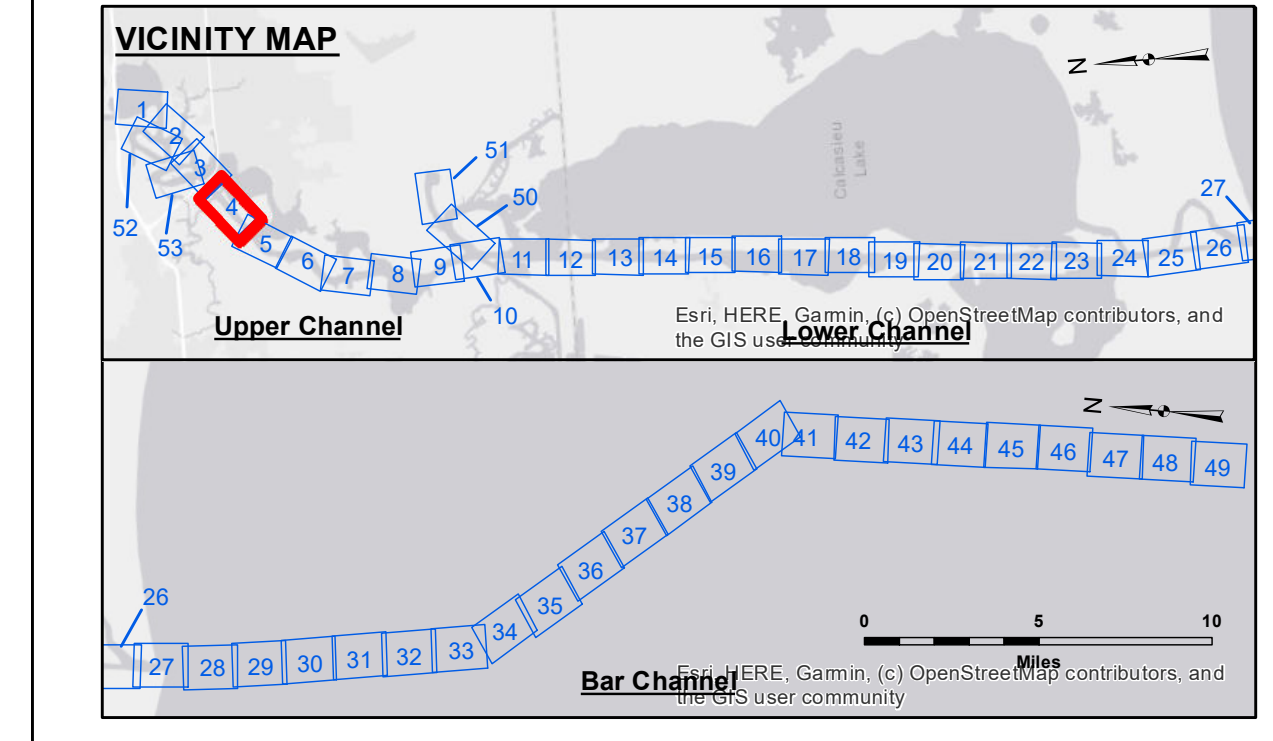
**Disclaimer:** The information depicted on this map represents the results of a survey and is not to be used for any other purpose. The user is responsible for the results of any use of the data for any other purpose.

Submitted:	Surveyed By:	RYLAND/ADAMS
Recommended:	Plotted By:	BD
Approved:	Chief, Survey Section	
	Chief, Waterways Maintenance Section	AC

**CALCASIEU SHIP CHANNEL  
UPPER SHEET 4  
CR\_04\_UPR\_20200902\_CS\_POSTSTORM  
02 September 2020**

**Sheet Reference Number  
4 of 53**

Revision Number:  
4.1-20191105



LEGEND		
--- Federal Navigation Channel	○ Cable Area	3 Fluff Thickness (feet)*
— Federal Navigation Center Line	□ Placement Area	● Shoalest Sounding**
— As-built Pipeline/Cable	⊗ Anchorage Area	☆ Beacon, General
..... Unconfirmed Pipeline/Cable	⊗ Obstruction Point	◆ Red Navigation Buoy
— Project Depth Contour	⊗ Wrecks-Submerged	◆ Green Navigation Buoy
		■ -16' and above
		■ -16' to -21'
		■ -21' to -26'
		■ -26' to -33'
		■ -33' to -39'
		■ -39' to -41'
		■ -41' to -43'
		■ -43' and below

Gage Reading: DM 114: 2.10 MLLW  
 Sea Conditions: CALM  
 Vessel Name: M/V VALENTOUR  
 Survey Type: CONDITION  
 Sounding Frequency\*\*\*: LOW

Vertical Datum: 0.0 NAVD88 (OPUS 2013) = 0.6' MLLW = 1.6' MLG or 0.0' MLLW = 1.0' MLG

Distances on the Calcasieu River are shown at 1 mile intervals.

The location of navigation aids are based on and provided by the U.S. Coast Guard and USACE survey crews.

2015 Aerial Photography data source: NAIP  
 Reference is N.O.A. Navigation Chart No. 11339.

\* Difference between high and low frequency elevations where greater than 1.0'.  
 \*\* Shoalest Sounding per Quarter per Reach.

\*\*\* High frequency (200 kHz) survey data represents the first signal return at a sounding location and will include suspended solids, known as "fluff", if present. Low frequency (20 kHz) survey data normally penetrates through this "fluff" layer to depict elevations of consolidated bottom material. Low frequency accuracies may vary depending on channel conditions and fathometer settings.

