

DISCLAIMER: The United States Government furnishes these data and the recipient accepts and uses them with the express understanding that the data are not warranted for any purpose other than that for which they were collected, and that the user is responsible for the results. The user is responsible for the results. The user is responsible for the results. The user is responsible for the results.

DISTRICT: The data represent the results of data collection for a specific US Army Corps of Engineers project. The data are not warranted for any purpose other than that for which they were collected, and that the user is responsible for the results. The user is responsible for the results. The user is responsible for the results. The user is responsible for the results.

Submitted:	SP-JS
Recommended:	JH
Checked:	JH

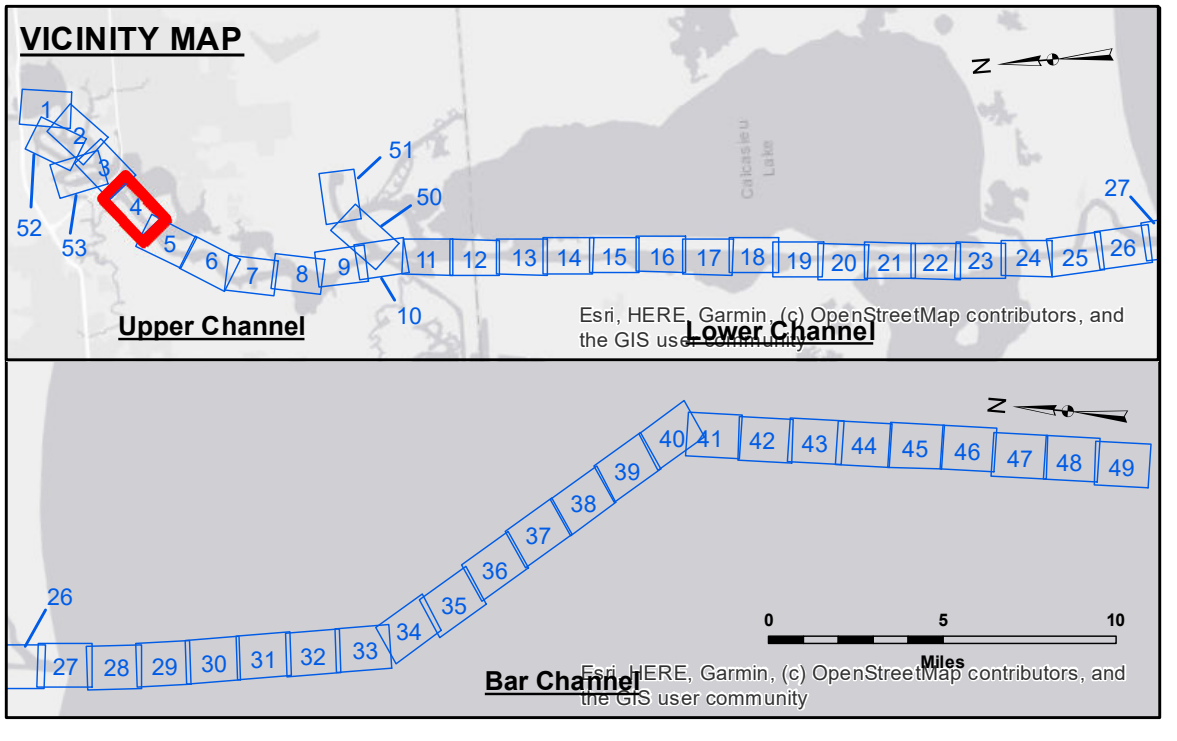
U.S. ARMY CORPS OF ENGINEERS
NEW ORLEANS DISTRICT

**CALCASIEU SHIP CHANNEL
UPPER SHEET 4**

CR_04_UPR_20231024_CS

24 October 2023

Sheet Reference Number
4 of 53



LEGEND

--- Federal Navigation Channel	○ Cable Area	3 Fluff Thickness (feet)*	-16' and above
— Federal Navigation Center Line	□ Placement Area	● Shoalest Sounding**	-16' to -21'
— As-built Pipeline/Cable	⊗ Anchorage Area	☆ Beacon, General	-21' to -26'
..... Unconfirmed Pipeline/Cable	⊗ Obstruction Point	◆ Red Navigation Buoy	-26' to -33'
— Project Depth Contour	⊗ Wrecks-Submerged	◆ Green Navigation Buoy	-33' to -39'
			-39' to -41'
			-41' to -43'
			-43' and below

NOTES:

Horizontal Coordinate System:
North American Datum of 1983 (NAD83), projected to the State Plane Coordinate System (SPCS), Louisiana South Zone. Distance units in U.S. Survey Feet.

Vertical Datum:
Soundings are shown in feet and indicate depths below Mean Lower Low Water Datum (MLLW).
Datum Relationships for gage 73565 as of December 2013:
0.0' NAVD83 (OPUS 2013) = 0.6' MLLW = 1.6' MLG or 0.0' MLLW = 1.0' MLG

Distances on the Calcasieu River are shown at 1 mile intervals.

The location of navigation aids are based on and provided by the U.S. Coast Guard and USACE survey crews.

2022 Aerial Photography data source: PAR LLC
Reference is N.O.A. Navigation Chart No. 11339.

* Difference between high and low frequency elevations where greater than 1.0'.
** Shoalest Sounding per Quarter per Reach.

Gage Reading: DM 114 VRN: 1.60 MLLW AVG
Sea Conditions: CALM
Vessel Name: M/V TECHE
Survey Type: CONDITION
Sounding Frequency*:** LOW

Feet
0 400 800 1,200 1,600