

Accession: The United States Government furnishes these data and the recipient accepts and uses them with the express understanding that the data are not to be used for any purpose other than that for which they were originally prepared. The user is responsible for the results of any use of the data for other than the intended purpose.

Distribution Liability: The data represents the results of data collection/processing for a specific US Army Corps of Engineers project. It is only valid for its intended use, control, time and accuracy specifications. The user is responsible for the results of any use of the data for other than the intended purpose.

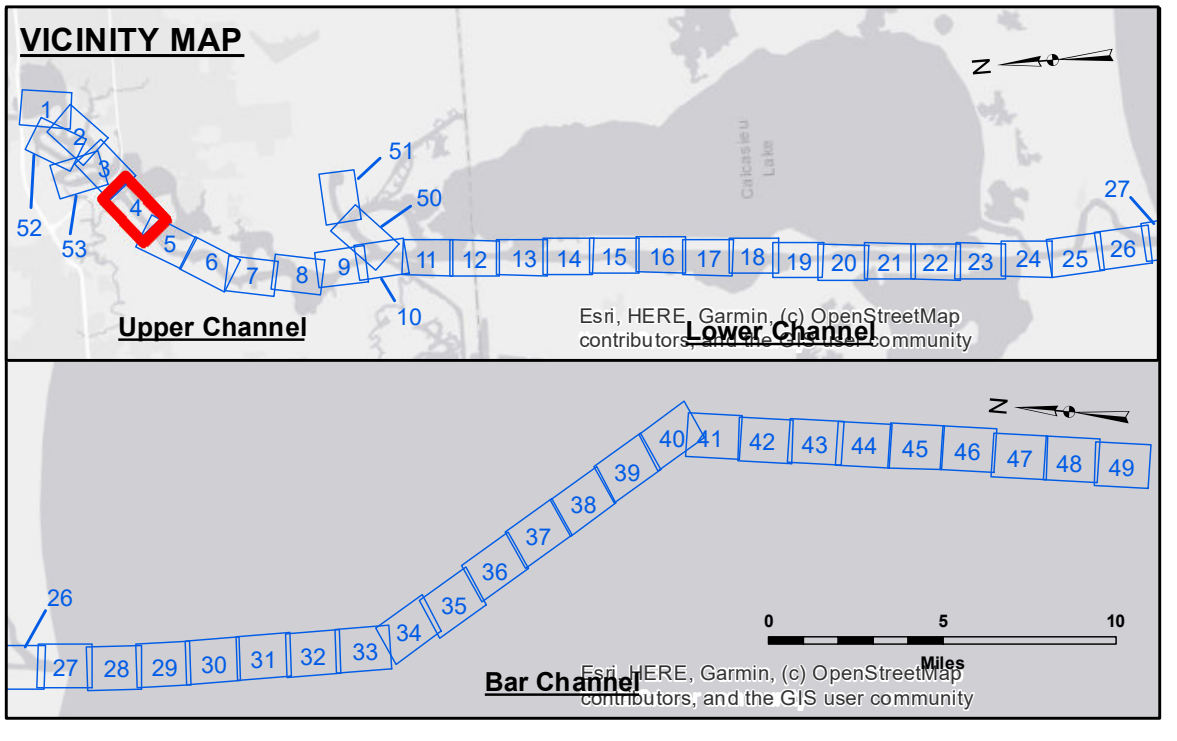
Data: Constantine Hydrographic survey data is subject to change rapidly due to several factors including but not limited to changing hydrographic conditions which develop after the date of the survey. The user is responsible for the results of any use of the data for other than the intended purpose. The user is responsible for the results of any use of the data for other than the intended purpose.

Submitted:	Surveyed By: SP-JS
Recommended: Chief, Survey Section	Plotted By: JH
Approved: Chief, Waterways Maintenance Section	Checked By: JH

**CALCASIEU SHIP CHANNEL
UPPER SHEET 4
CR_04_UPR_20240304_CS
04 March 2024**

**Sheet Reference Number
4 of 53**

Revision Number: 4.2-20240420



LEGEND	
--- Federal Navigation Channel	● Cable Area
— Federal Navigation Center Line	□ Placement Area
— As-built Pipeline/Cable	□ Anchorage Area
..... Unconfirmed Pipeline/Cable	⊗ Obstruction Point
— Project Depth Contour	⚓ Wrecks-Submerged
3 Fluff Thickness (feet)*	★ Beacon, General
● Shoalest Sounding**	◆ Red Navigation Buoy
● Green Navigation Buoy	◆ Green Navigation Buoy

NOTES:

Horizontal Coordinate System:
North American Datum of 1983 (NAD83), projected to the State Plane Coordinate System (SPCS), Louisiana South Zone. Distance units in U.S. Survey Feet.

Vertical Datum:
Soundings are shown in feet and indicate depths below Mean Lower Low Water Datum (MLLW).
Datum Relationships for gage 73565 as of December 2013:
0.0' NAVD83 (OPUS 2013) = 0.6' MLLW = 1.6' MLG or 0.0' MLLW = 1.0' MLG

Distances on the Calcasieu River are shown at 1 mile intervals.

The location of navigation aids are based on and provided by the U.S. Coast Guard and USACE survey crews.

2022 Aerial Photography data source: PAR LLC
Reference is N.O.A. Navigation Chart No. 11339.

* Difference between high and low frequency elevations where greater than 1.0'.
** Shoalest Sounding per Quarter per Reach.

*** High frequency (200 kHz) survey data represents the first signal return at a sounding location and will include suspended solids, known as "fluff", if present. Low frequency (20 kHz) survey data normally penetrates through this "fluff" layer to depict elevations of consolidated bottom material. Low frequency accuracies may vary depending on channel conditions and fathometer settings.

Gage Reading: DM 114 VRN: 0.20 MLLW AVG
Sea Conditions: CALM
Vessel Name: MV TECHE
Survey Type: CONDITION
Sounding Frequency***: LOW

Feet
0 400 800 1,200 1,600

NOTES:

Horizontal Coordinate System:
North American Datum of 1983 (NAD83), projected to the State Plane Coordinate System (SPCS), Louisiana South Zone. Distance units in U.S. Survey Feet.

Vertical Datum:
Soundings are shown in feet and indicate depths below Mean Lower Low Water Datum (MLLW).
Datum Relationships for gage 73565 as of December 2013:
0.0' NAVD83 (OPUS 2013) = 0.6' MLLW = 1.6' MLG or 0.0' MLLW = 1.0' MLG

Distances on the Calcasieu River are shown at 1 mile intervals.

The location of navigation aids are based on and provided by the U.S. Coast Guard and USACE survey crews.

2022 Aerial Photography data source: PAR LLC
Reference is N.O.A. Navigation Chart No. 11339.

* Difference between high and low frequency elevations where greater than 1.0'.
** Shoalest Sounding per Quarter per Reach.

*** High frequency (200 kHz) survey data represents the first signal return at a sounding location and will include suspended solids, known as "fluff", if present. Low frequency (20 kHz) survey data normally penetrates through this "fluff" layer to depict elevations of consolidated bottom material. Low frequency accuracies may vary depending on channel conditions and fathometer settings.