

Accession: The United States Government furnishes these data and the recipient accepts and uses them with the express understanding that the data are not to be used for any purpose other than that for which they were originally prepared, or implied concerning the accuracy, completeness, reliability, usability or suitability for any particular purpose of the recipient. The user is responsible for the results obtained from the use of the data for other than its intended purpose.

Accession: The United States Government furnishes these data and the recipient accepts and uses them with the express understanding that the data are not to be used for any purpose other than that for which they were originally prepared, or implied concerning the accuracy, completeness, reliability, usability or suitability for any particular purpose of the recipient. The user is responsible for the results obtained from the use of the data for other than its intended purpose.

Accession: The United States Government furnishes these data and the recipient accepts and uses them with the express understanding that the data are not to be used for any purpose other than that for which they were originally prepared, or implied concerning the accuracy, completeness, reliability, usability or suitability for any particular purpose of the recipient. The user is responsible for the results obtained from the use of the data for other than its intended purpose.

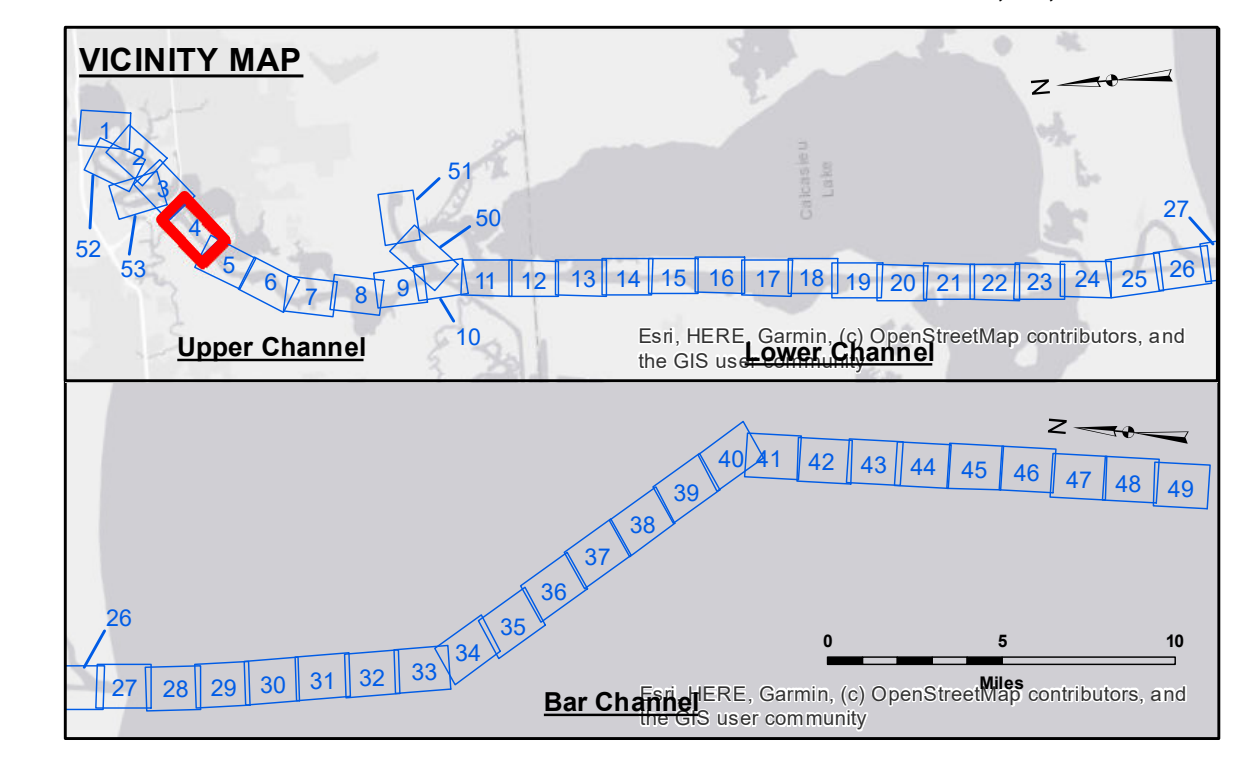
Submitted:	Surveyed By: SP-JS
Recommended:	Plotted By: BD
Approved:	Checked By: ADJH

U.S. ARMY CORPS OF ENGINEERS
NEW ORLEANS DISTRICT

**CALCASIEU SHIP CHANNEL
UPPER SHEET 4
CR_04_UPR_20241212_CS
12 December 2024**

**Sheet Reference Number
4 of 53**

Revision Number:
4.2-20240420



LEGEND		
--- Federal Navigation Channel	○ Cable Area	3 Fluff Thickness (feet)*
— Federal Navigation Center Line	□ Placement Area	● Shoalest Sounding**
— As-built Pipeline/Cable	⊗ Anchorage Area	★ Beacon, General
..... Unconfirmed Pipeline/Cable	⊗ Obstruction Point	◆ Red Navigation Buoy
— Project Depth Contour	⊗ Wrecks-Submerged	◆ Green Navigation Buoy
		■ -16' and above
		■ -16' to -21'
		■ -21' to -26'
		■ -26' to -33'
		■ -33' to -39'
		■ -39' to -41'
		■ -41' to -43'
		■ -43' and below

NOTES:

Horizontal Coordinate System:
North American Datum of 1983 (NAD83), projected to the State Plane Coordinate System (SPCS), Louisiana South Zone. Distance units in U.S. Survey Feet.

Vertical Datum:
Soundings are shown in feet and indicate depths below Mean Lower Low Water Datum (MLLW).
Datum Relationships for gage 73565 as of December 2013:
0.0' NAVD88 (OPUS 2013) = 0.6' MLLW = 1.6' MLG or 0.0' MLLW = 1.0' MLG

Distances on the Calcasieu River are shown at 1 mile intervals.

The location of navigation aids are based on and provided by the U.S. Coast Guard and USACE survey crews.

2022 Aerial Photography data source: PAR LLC
Reference is N.O.A.A. Navigation Chart No. 11339.

* Difference between high and low frequency elevations where greater than 1.0'.
** Shoalest Sounding per Quarter per Reach.

*** High frequency (200 kHz) survey data represents the first signal return at a sounding location and will include suspended solids, known as "fluff", if present. Low frequency (20 kHz) survey data normally penetrates through this "fluff" layer to depict elevations of consolidated bottom material. Low frequency accuracies may vary depending on channel conditions and fathometer settings.

Gage Reading: DM 114 VRN: -0.27 MLLW AVG.
Sea Conditions: CALM
Vessel Name: MV TECHE
Survey Type: CONDITION
Sounding Frequency***: LOW

Feet
0 400 800 1,200 1,600

NOTES:

Horizontal Coordinate System:
North American Datum of 1983 (NAD83), projected to the State Plane Coordinate System (SPCS), Louisiana South Zone. Distance units in U.S. Survey Feet.

Vertical Datum:
Soundings are shown in feet and indicate depths below Mean Lower Low Water Datum (MLLW).
Datum Relationships for gage 73565 as of December 2013:
0.0' NAVD88 (OPUS 2013) = 0.6' MLLW = 1.6' MLG or 0.0' MLLW = 1.0' MLG

Distances on the Calcasieu River are shown at 1 mile intervals.

The location of navigation aids are based on and provided by the U.S. Coast Guard and USACE survey crews.

2022 Aerial Photography data source: PAR LLC
Reference is N.O.A.A. Navigation Chart No. 11339.

* Difference between high and low frequency elevations where greater than 1.0'.
** Shoalest Sounding per Quarter per Reach.

*** High frequency (200 kHz) survey data represents the first signal return at a sounding location and will include suspended solids, known as "fluff", if present. Low frequency (20 kHz) survey data normally penetrates through this "fluff" layer to depict elevations of consolidated bottom material. Low frequency accuracies may vary depending on channel conditions and fathometer settings.