

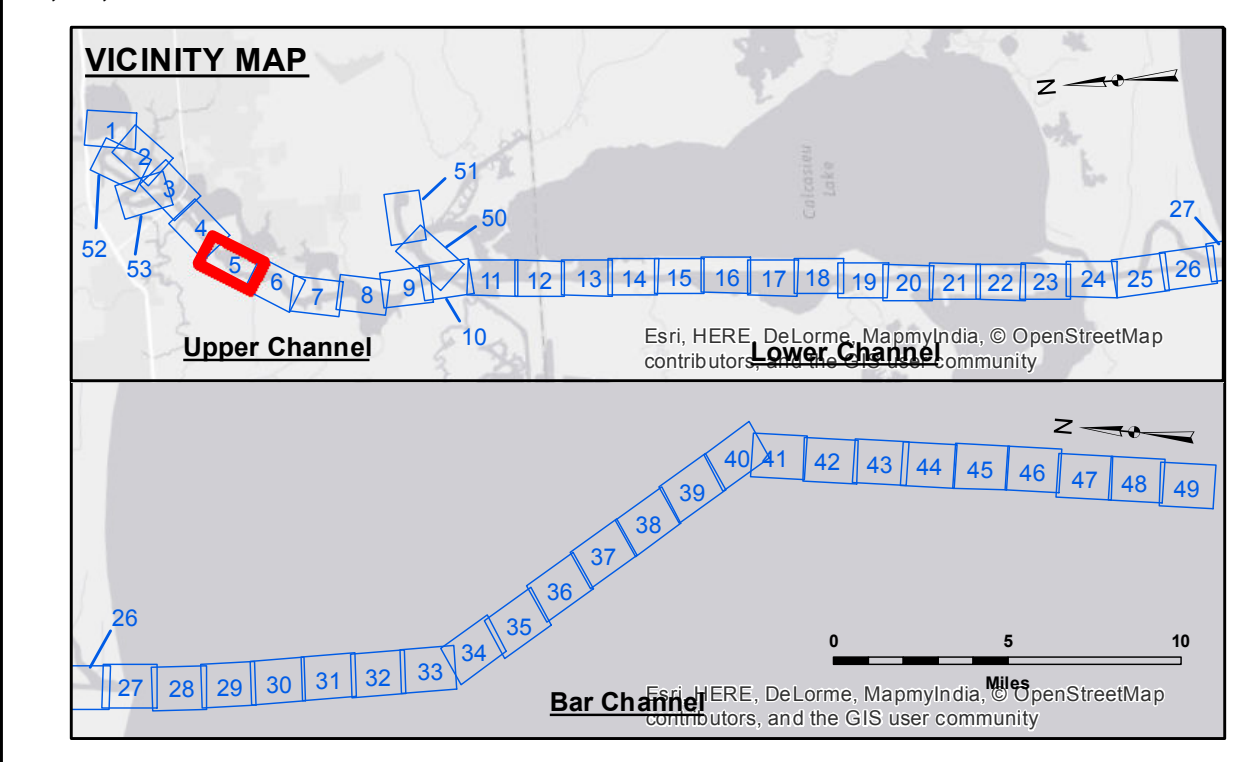
DISCLAIMER
 The information depicted on this map represents the results of a survey conducted by the United States Army Corps of Engineers. The user is responsible for the accuracy, completeness, and reliability of the data for its intended use. The user is not to be held liable for any damages or losses resulting from the use of this data. The user is to be held liable for any damages or losses resulting from the use of this data. The user is to be held liable for any damages or losses resulting from the use of this data.

Submitted:	Reviewed By:	Checked By:
Recommended:	Plotted By:	Checked By:
Approved:	Chief, Survey Section	Chief, Waterways Maintenance Section

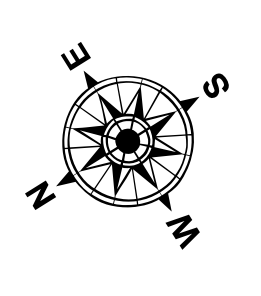
U.S. ARMY CORPS OF ENGINEERS
 NEW ORLEANS DISTRICT

CALCASIEU SHIP CHANNEL
 UPPER SHEET 5
 CR_05_UPR_20150810
 10 August 2015

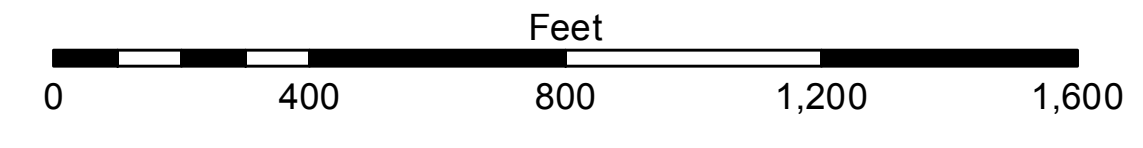
Sheet Reference Number
 5 of 53



LEGEND		Depth Ranges	
--- Federal Navigation Channel	○ Cable Area	■ -15' and above	■ -15' to -20'
— Federal Navigation Center Line	□ Placement Area	■ -20' to -25'	■ -25' to -32'
— As-built Pipeline/Cable	□ Anchorage Area	■ -32' to -38'	■ -38' to -40'
..... Unconfirmed Pipeline/Cable	⊗ Obstruction Point	■ -40' to -42'	■ -42' and below
— Project Depth Contour	✈ Wrecks-Submerged	■ Borrow Area	● Shoalest Sounding**
	★ Beacon, General	★ Red Navigation Buoy	◆ Green Navigation Buoy



Gage Reading: DM 114: 1.6 MLG
 Sea Conditions: CALM
 Vessel Name: M/V TECHE
 Survey Type: CONDITION
 Sounding Frequency***: LOW



NOTES:
 Horizontal Coordinate System: North American Datum of 1983 (NAD83), projected to the State Plane Coordinate System (SPCS), Louisiana South Zone. Distance units in U.S. Survey Feet.
 Vertical Datum: Soundings are shown in feet and indicate depths below Mean Low Gulf Datum (MLG). Datum Relationships for gage 73565 as of December 2013: 0.0' NAVD83 (OPUS 2013) = 0.6' MLLW = 1.6' MLG or 0.0' MLLW = 1.0' MLG
 Distances on the Calcasieu River are shown at 1 mile intervals.
 The location of navigation aids are based on and provided by the U.S. Coast Guard and USACE survey crews.
 2010 Aerial Photography data source: NAIP
 Reference is N.O.A.A. Navigation Chart No. 11339.
 *** Shoalest Sounding per Quarter per Reach.
 *** High frequency (200 kHz) survey data represents the first signal return at a sounding location and will include suspended solids, known as "fluff", if present. Low frequency (20 kHz) survey data normally penetrates through this "fluff" layer to depict elevations of consolidated bottom material. Low frequency accuracies may vary depending on channel conditions and bathymeter settings.