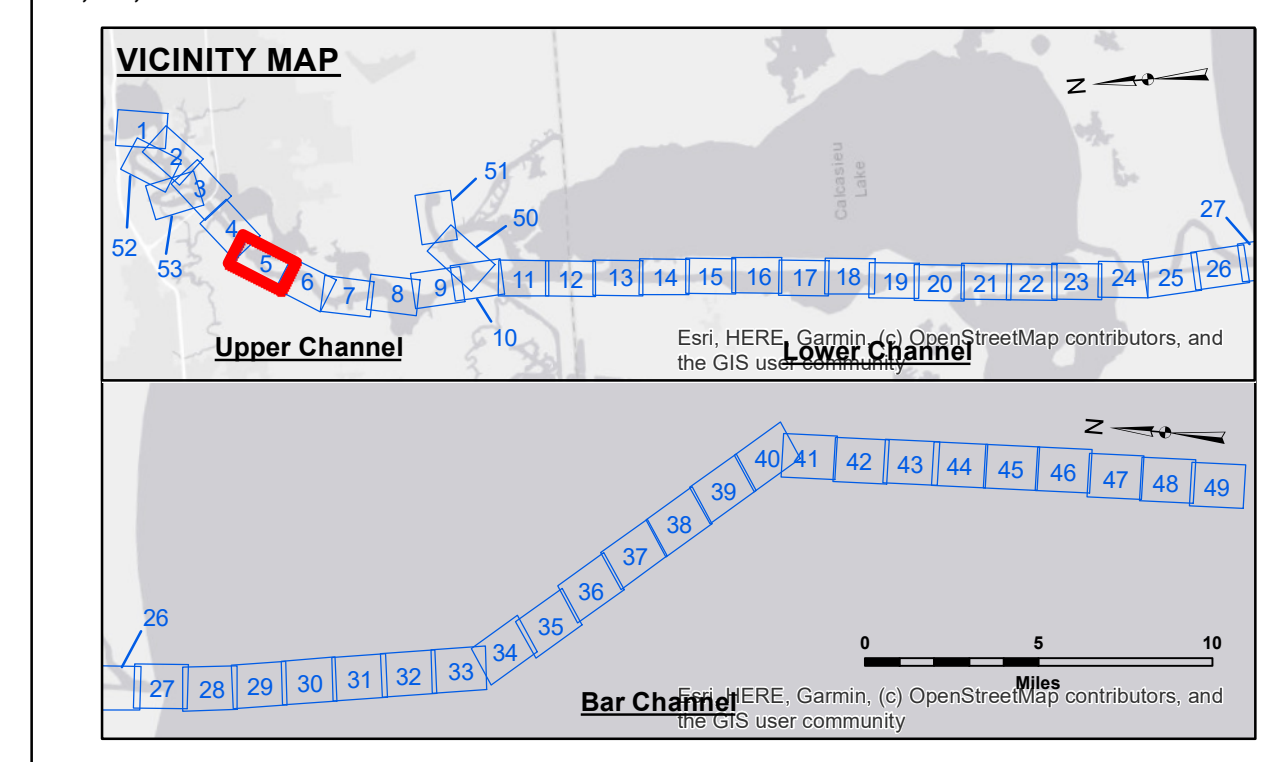
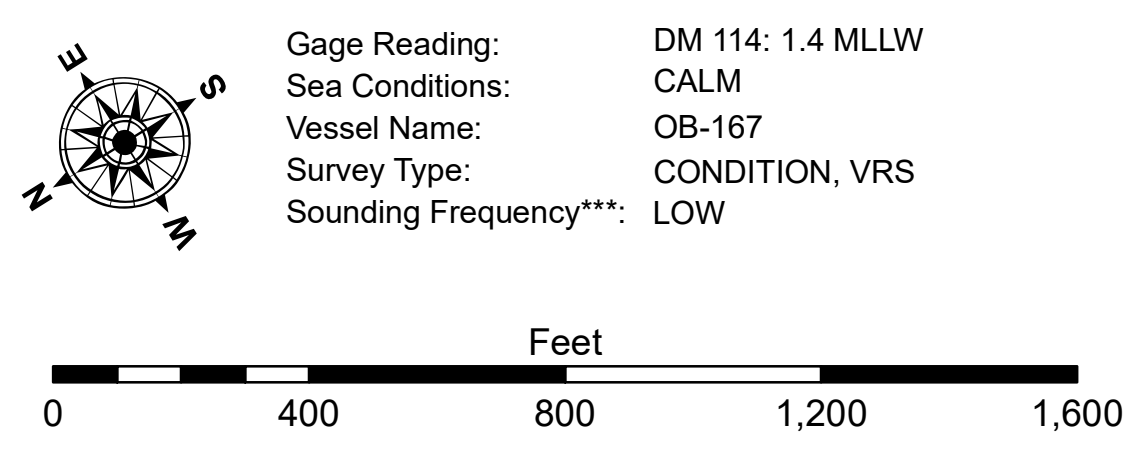


Distribution Liability: The data represents the results of data collection/processing for a specific US Army Corps of Engineers project. It is only valid for its intended use, content, time and accuracy specifications. The user is responsible for the results and any liability, whatever the nature, arising from the use of these data. The user agrees to hold the US Army Corps of Engineers harmless from any and all claims, damages, losses and expenses, including reasonable attorney's fees, that may be asserted against the US Army Corps of Engineers by any third party as a result of the use of these data. The user agrees to indemnify and hold the US Army Corps of Engineers harmless from any and all claims, damages, losses and expenses, including reasonable attorney's fees, that may be asserted against the US Army Corps of Engineers by any third party as a result of the use of these data. The user agrees to hold the US Army Corps of Engineers harmless from any and all claims, damages, losses and expenses, including reasonable attorney's fees, that may be asserted against the US Army Corps of Engineers by any third party as a result of the use of these data. The user agrees to hold the US Army Corps of Engineers harmless from any and all claims, damages, losses and expenses, including reasonable attorney's fees, that may be asserted against the US Army Corps of Engineers by any third party as a result of the use of these data.

U.S. ARMY CORPS OF ENGINEERS NEW ORLEANS DISTRICT		
Submitted:	Surveyed By: SP,SR	Plotted By: AO
Recommended:	Chart, Survey Section	Checked By: AO
Approved:	Chart, Waterways Maintenance Section	



LEGEND		
--- Federal Navigation Channel	○ Cable Area	3 Fluff Thickness (feet)*
— Federal Navigation Center Line	□ Placement Area	● Shoalest Sounding**
— As-built Pipeline/Cable	⊗ Anchorage Area	☆ Beacon, General
..... Unconfirmed Pipeline/Cable	⊗ Obstruction Point	◆ Red Navigation Buoy
— Project Depth Contour	✈ Wrecks-Submerged	◆ Green Navigation Buoy
		■ -16' and above
		■ -16' to -21'
		■ -21' to -26'
		■ -26' to -33'
		■ -33' to -39'
		■ -39' to -41'
		■ -41' to -43'
		■ -43' and below



NOTES:
 Horizontal Coordinate System: North American Datum of 1983 (NAD83), projected to the State Plane Coordinate System (SPCS), Louisiana South Zone. Distance units in U.S. Survey Feet.
 Vertical Datum: Soundings are shown in feet and indicate depths below Mean Lower Low Water Datum (MLLW). Datum Relationships for gage 73565 as of December 2013: 0.0' NAVD83 (OPUS 2013) = 0.6' MLLW = 1.6' MLG or 0.0' MLLW = 1.0' MLG
 Distances on the Calcasieu River are shown at 1 mile intervals.
 The location of navigation aids are based on and provided by the U.S. Coast Guard and USACE survey crews.
 2015 Aerial Photography data source: NAIP
 Reference is N.O.A. Navigation Chart No. 11339.
 * Difference between high and low frequency elevations where greater than 1.0'.
 ** Shoalest Sounding per Quarter per Reach.
 *** High frequency (200 kHz) survey data represents the first signal return at a sounding location and will include suspended solids, known as "fluff", if present. Low frequency (20 kHz) survey data normally penetrates through this "fluff" layer to depict elevations of consolidated bottom material. Low frequency accuracies may vary depending on channel conditions and fathometer settings.

**CALCASIEU SHIP CHANNEL
 UPPER SHEET 5
 CR_05_UPR_20191121_CS
 21 November 2019**

**Sheet Reference Number
 5 of 53**

Revision Number:
 4:0-2019012