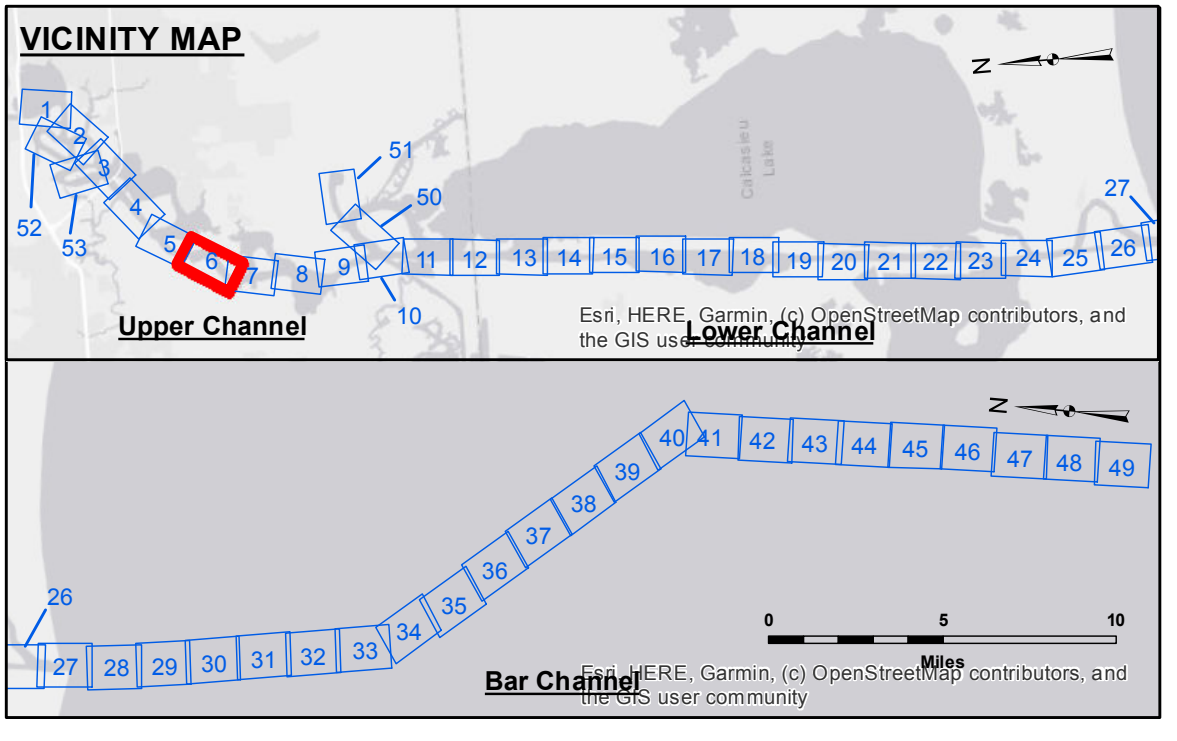


Accession: The United States Government furnishes these data and the recipient accepts and uses them with the express understanding that the data are not to be used for any purpose other than that for which they were originally prepared, or implied concerning the accuracy, completeness, reliability, usability, or suitability for any particular purpose of the recipient. The user is responsible for the results of any use of these data. The recipient may not transfer these data to others without the written approval of the United States Government. The recipient may not transfer these data to others without the written approval of the United States Government. The recipient may not transfer these data to others without the written approval of the United States Government. The recipient may not transfer these data to others without the written approval of the United States Government.

Submitted:	Surveyed By: SP/SPK
Recommended:	Plotted By: BD
Approved:	Checked By: AD/JH
Chief, Waterways Maintenance Section	

**CALCASIEU SHIP CHANNEL
UPPER SHEET 6
CR_06_UPR_20220822_CS
22 August 2022**

**Sheet Reference Number
6 of 53**



LEGEND	
--- Federal Navigation Channel	○ Cable Area
— Federal Navigation Center Line	□ Placement Area
— As-built Pipeline/Cable	□ Anchorage Area
..... Unconfirmed Pipeline/Cable	⊗ Obstruction Point
— Project Depth Contour	⚓ Wrecks-Submerged
3 Fluff Thickness (feet)*	★ Beacon, General
● Shoalest Sounding**	◆ Red Navigation Buoy
○ Green Navigation Buoy	◆ Green Navigation Buoy

Gage Reading: VRS RTK NTRIP: 1.85 MLLW AVG.
Sea Conditions: CALM
Vessel Name: OB-169
Survey Type: CONDITION
Sounding Frequency*:** LOW

Vertical Datum: Soundings are shown in feet and indicate depths below Mean Lower Low Water Datum (MLLW). Datum Relationships for gage 73565 as of December 2013: 0.0' NAVD83 (OPUS 2013) = 0.6' MLLW = 1.6' MLG or 0.0' MLLW = 1.0' MLG

Distances on the Calcasieu River are shown at 1 mile intervals.

The location of navigation aids are base on and provided by the U.S. Coast Guard and USACE survey crew.

2022 Aerial Photography data source: PAR LLC
 Reference is N.O.A.A. Navigation Chart No. 11339.

* Difference between high and low frequency elevations where greater than 1.0'.
 ** Shoalest Sounding per Quarter per Reach.
 *** High frequency (200 kHz) survey data represents the first signal return at a sounding location and will include suspended solids, known as "fluff", if present. Low frequency (20 kHz) survey data normally penetrates through this "fluff" layer to depict elevations of consolidated bottom material. Low frequency accuracies may vary depending on channel conditions and fathometer settings.

NOTES:
 Horizontal Coordinate System: North American Datum of 1983 (NAD83), projected to the State Plane Coordinate System (SPCS), Louisiana South Zone. Distance units in U.S. Survey Feet.
 Vertical Datum: Soundings are shown in feet and indicate depths below Mean Lower Low Water Datum (MLLW). Datum Relationships for gage 73565 as of December 2013: 0.0' NAVD83 (OPUS 2013) = 0.6' MLLW = 1.6' MLG or 0.0' MLLW = 1.0' MLG
 Distances on the Calcasieu River are shown at 1 mile intervals.
 The location of navigation aids are base on and provided by the U.S. Coast Guard and USACE survey crew.
 2022 Aerial Photography data source: PAR LLC
 Reference is N.O.A.A. Navigation Chart No. 11339.
 * Difference between high and low frequency elevations where greater than 1.0'.
 ** Shoalest Sounding per Quarter per Reach.
 *** High frequency (200 kHz) survey data represents the first signal return at a sounding location and will include suspended solids, known as "fluff", if present. Low frequency (20 kHz) survey data normally penetrates through this "fluff" layer to depict elevations of consolidated bottom material. Low frequency accuracies may vary depending on channel conditions and fathometer settings.