

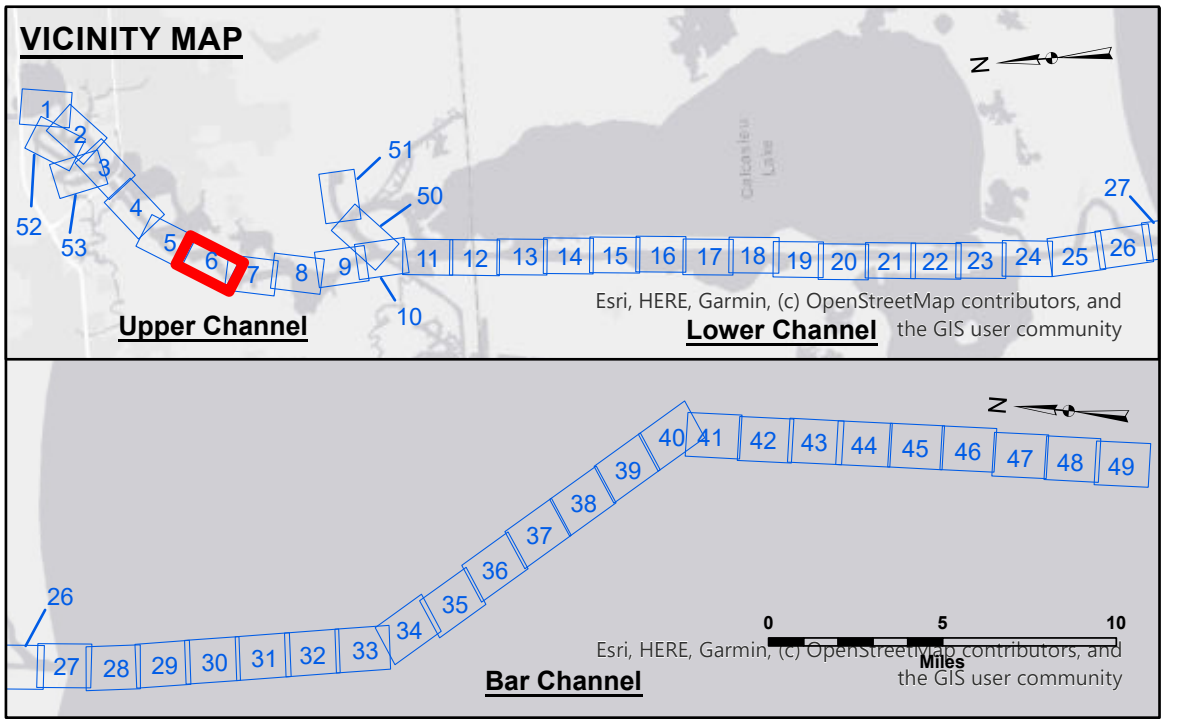
DISCLAIMER: The data represented on this map is the result of data collection and processing for a specific US Army Corps of Engineers activity and does not represent the general condition of the waterway. The user is responsible for the accuracy, completeness, and reliability of the data for their intended use. The user is responsible for the results of any application of the data for other than its intended purpose. This data is provided for informational purposes only and is not intended to be used for any other purpose. The user is responsible for the results of any application of the data for other than its intended purpose. This data is provided for informational purposes only and is not intended to be used for any other purpose.

DISCLAIMER: The United States Government furnishes these data and the recipient accepts and uses them with the express understanding that the Government makes no warranty, expressed or implied, concerning the accuracy, completeness, or reliability of the data furnished. The recipient agrees to indemnify the United States Government from and hold it harmless from any liability whatsoever to any person by reason of any use of these data, whether or not such use is made in accordance with the terms of this disclaimer. The recipient may not transfer these data to others without also transferring this disclaimer. The information depicted on this map represents the results of a survey conducted on or about the date shown on the map. It is not intended to represent the general condition existing at that time.

Submitted:	Surveyed By: SP/JS
Recommended:	Plotted By: BID
Approved:	Checked By: AO/JH

**CALCASIEU SHIP CHANNEL
UPPER SHEET 6
CR_06_UPR_20250415_CS
15 April 2025**

**Sheet Reference Number
6 of 53**



LEGEND	
--- Federal Navigation Channel	● Cable Area
— Federal Navigation Center Line	□ Placement Area
— As-built Pipeline/Cable	□ Anchorage Area
..... Unconfirmed Pipeline/Cable	⊗ Obstruction Point
— Project Depth Contour	⚓ Wrecks-Submerged
3 Fluff Thickness (feet)*	★ Beacon, General
● Shoalest Sounding**	◆ Red Navigation Buoy
◆ Green Navigation Buoy	

Gage Reading: DM 114 VRN: 0.96 MLLW AVG.
 Sea Conditions: CHOPPY
 Vessel Name: M/V TECHE
 Survey Type: CONDITION
 Sounding Frequency***: LOW

NOTES:
 Horizontal Coordinate System: North American Datum of 1983 (NAD83), projected to the State Plane Coordinate System (SPCS), Louisiana South Zone. Distance units in U.S. Survey Feet.
 Vertical Datum: Soundings are shown in feet and indicate depths below Mean Lower Low Water Datum (MLLW). Datum Relationships for gage 73965 as of December 2013: 0.0' NAVD83 (OPUS 2013) = 0.6' MLLW = 1.6' MLG or 0.0' MLLW = 1.0' MLG
 Distances on the Calcasieu River are shown at 1 mile intervals.
 The location of navigation aids are base on and provided by the U.S. Coast Guard and USACE survey crews.
 2022 Aerial Photography data source: PAR LLC
 Reference is N.O.A. Navigation Chart No. 11339.
 * Difference between high and low frequency elevations where greater than 1.0'.
 ** Shoalest Sounding per Quarter per Reach.
 *** High frequency (200 kHz) survey data represents the first signal return at a sounding location and will include suspended solids, known as "fluff", if present. Low frequency (20 kHz) survey data normally penetrates through this "fluff" layer to depict elevations of consolidated bottom material. Low frequency accuracies may vary depending on channel conditions and fathometer settings.