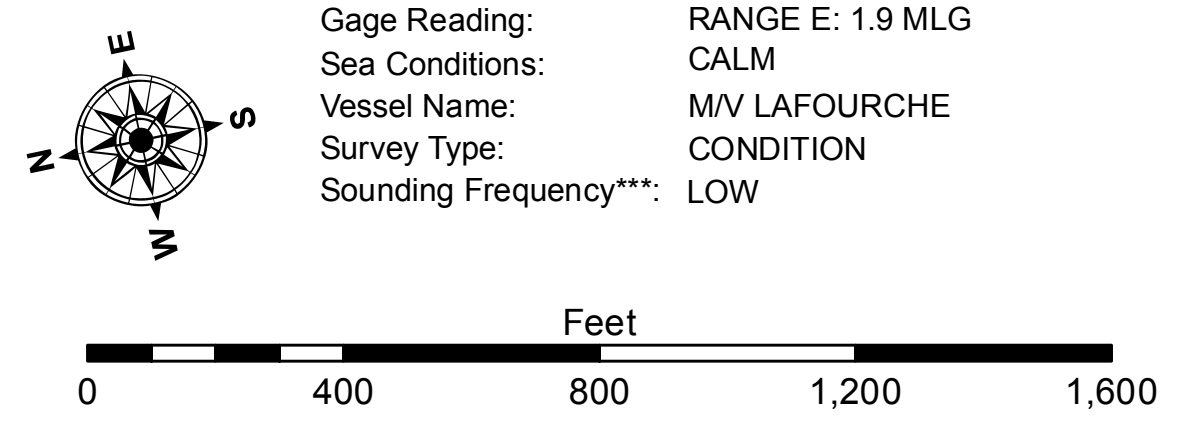


LEGEND

--- Federal Navigation Channel	○ Cable Area	□ Borrow Area	■ -15' and above
— Federal Navigation Center Line	□ Placement Area	● Shoalest Sounding**	■ -15' to -20'
— As-built Pipeline/Cable	□ Anchorage Area	★ Beacon, General	■ -20' to -25'
..... Unconfirmed Pipeline/Cable	⊗ Obstruction Point	◆ Red Navigation Buoy	■ -25' to -32'
— Project Depth Contour	⚓ Wrecks-Submerged	◆ Green Navigation Buoy	■ -32' to -38'
			■ -38' to -40'
			■ -40' to -42'
			■ -42' and below



NOTES:
 Horizontal Coordinate System: North American Datum of 1983 (NAD83), projected to the State Plane Coordinate System (SPCS), Louisiana South Zone. Distance units in U.S. Survey Feet.
 Vertical Datum: Soundings are shown in feet and indicate depths below Mean Low Gull Datum (MLG). Datum Relationships for gage 73575 as of December 2013: 0.0' NAVD83 (OPUS 2013) = 0.8' MLLW = 1.8' MLG or 0.0' MLLW = 1.0' MLG
 Distances on the Calcasieu River are shown at 1 mile intervals.
 The location of navigation aids are base on and provided by the U.S. Coast Guard and USACE survey crews.
 2010 Aerial Photography data source: NAIP
 Reference is N.O.A. Navigation Chart No. 11339.
 ** Shoalest Sounding per Quarter per Reach.
 *** High frequency (200 kHz) survey data represents the first signal return at a sounding location and will include suspended solids, known as "fluff", if present. Low frequency (20 kHz) survey data normally penetrates through this "fluff" layer to depict elevations of consolidated bottom material. Low frequency accuracies may vary depending on channel conditions and bathymeter settings.



DISCLAIMER: The United States Government furnishes these data and the recipient accepts and uses them with the express understanding that the data are not to be used for any purpose other than that for which they were provided. The user is responsible for the results of any use of these data. The United States Government does not warrant, either expressly or impliedly, the accuracy, completeness, or reliability of the data. The recipient may not transfer these data to others without obtaining the permission of the Chief of Engineers. The information depicted on this map represents the results of a survey conducted on or about the date shown on the map. The recipient should verify the information for use. The recipient should not rely on the information for any purpose other than that for which it was provided.

Submitted:	Reviewed By: JH/SPS
Recommended:	Plotted By: BITD
Approved:	Checked By: TAF

U.S. ARMY CORPS OF ENGINEERS
 NEW ORLEANS DISTRICT

**CALCASIEU SHIP CHANNEL
 UPPER SHEET 7
 CR_07_UPR_20150113
 13 January 2015**

**Sheet Reference Number
 7 of 53**