

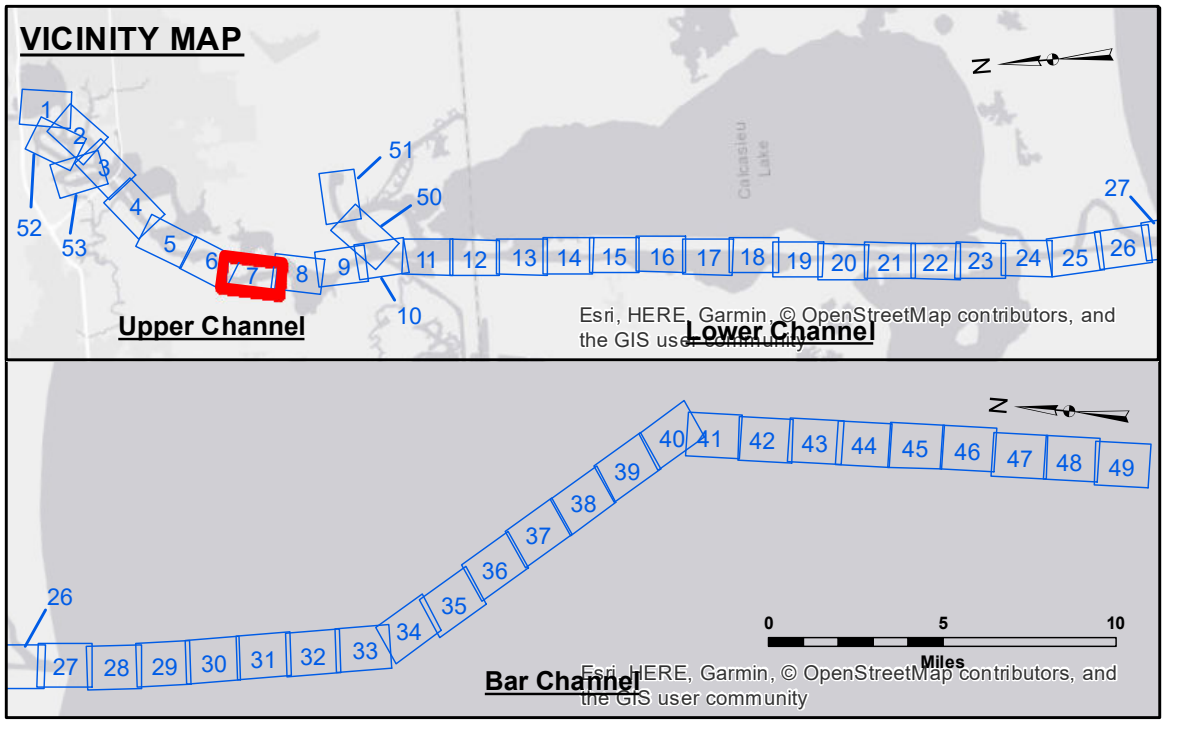
**DISCLAIMER**  
The information depicted on this map represents the results of a survey conducted by the United States Government. The user of this information is advised that the United States Government does not warrant, either expressly or impliedly, the accuracy, completeness, or reliability of the information for any purpose other than that for which it was prepared. The user is responsible for the results of any use of this information. The user is advised that the United States Government does not accept any liability for damages, including consequential damages, arising from the use of this information. The user is advised that the United States Government does not accept any liability for changes in the information depicted on this map due to changes in the physical conditions on the ground. The user is advised that the United States Government does not accept any liability for changes in the information depicted on this map due to changes in the physical conditions on the ground. The user is advised that the United States Government does not accept any liability for changes in the information depicted on this map due to changes in the physical conditions on the ground.

Submitted:	Surveyed By:	Plotted By:	Checked By:
Recommended:	DS, JH	AO	AO
Approved:	Chief, Survey Section		Chief, Waterways Maintenance Section

U.S. ARMY CORPS OF ENGINEERS  
NEW ORLEANS DISTRICT

**CALCASIEU SHIP CHANNEL  
UPPER SHEET 7  
CR\_07\_UPR\_20180919\_CS  
19 September 2018**

**Sheet Reference Number  
7 of 53**



LEGEND	
--- Federal Navigation Channel	● Cable Area
— Federal Navigation Center Line	□ Placement Area
— As-built Pipeline/Cable	⊗ Anchorage Area
..... Unconfirmed Pipeline/Cable	⊗ Obstruction Point
— Project Depth Contour	⊗ Wrecks-Submerged
3 Fluff Thickness (feet)*	★ Beacon, General
● Shoalest Sounding**	◆ Red Navigation Buoy
★ Beacon, General	◆ Green Navigation Buoy
■ -16' and above	
■ -16' to -21'	
■ -21' to -26'	
■ -26' to -33'	
■ -33' to -39'	
■ -39' to -41'	
■ -41' to -43'	
■ -43' and below	

