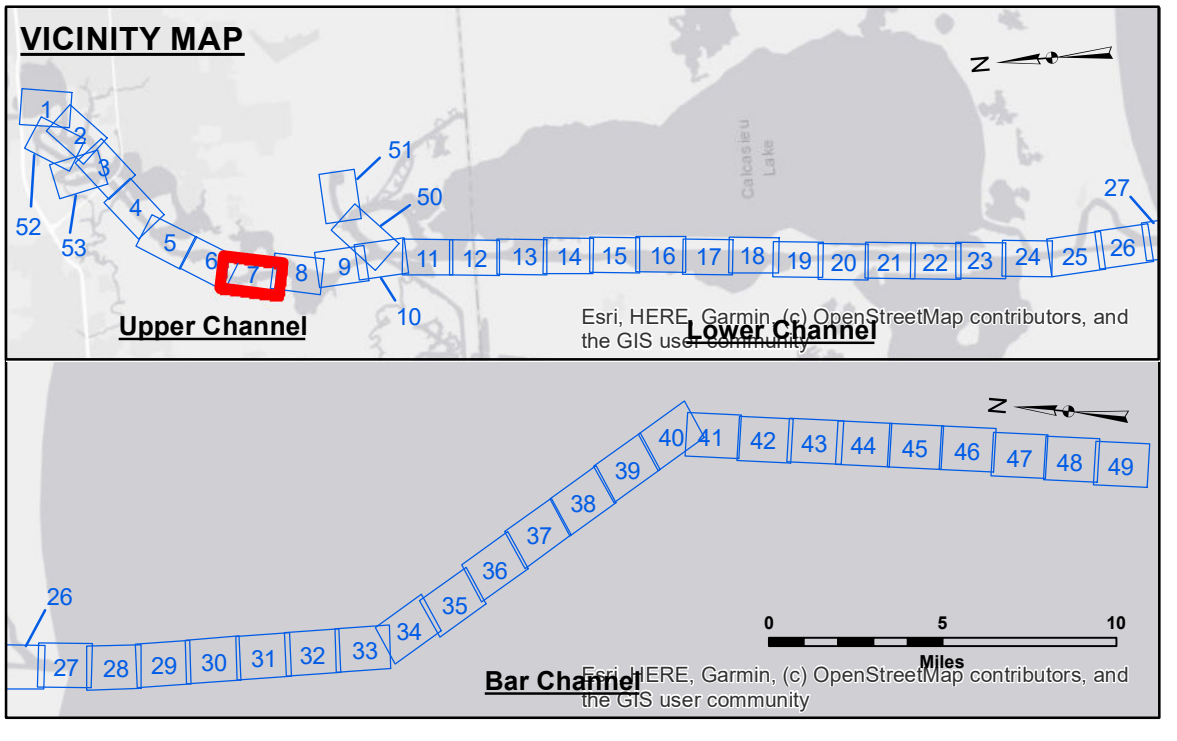


DISCLAIMER
 The United States Government furnishes these data and the recipient accepts and uses them with the express understanding that the data are not warranted for any particular purpose of the recipient, and that the recipient is responsible for the accuracy, completeness, and reliability of the data. The user is responsible for the results of the use of the data for their intended purpose. The information depicted on the map represents the results of a hydrographic survey conducted on or about the date of the survey. The information is not intended to represent the general condition existing at that time. The recipient may not transfer these data to others without transmitting the Disclaimer. The information depicted on the map represents the results of a hydrographic survey conducted on or about the date of the survey. The information is not intended to represent the general condition existing at that time. The recipient may not transfer these data to others without transmitting the Disclaimer.

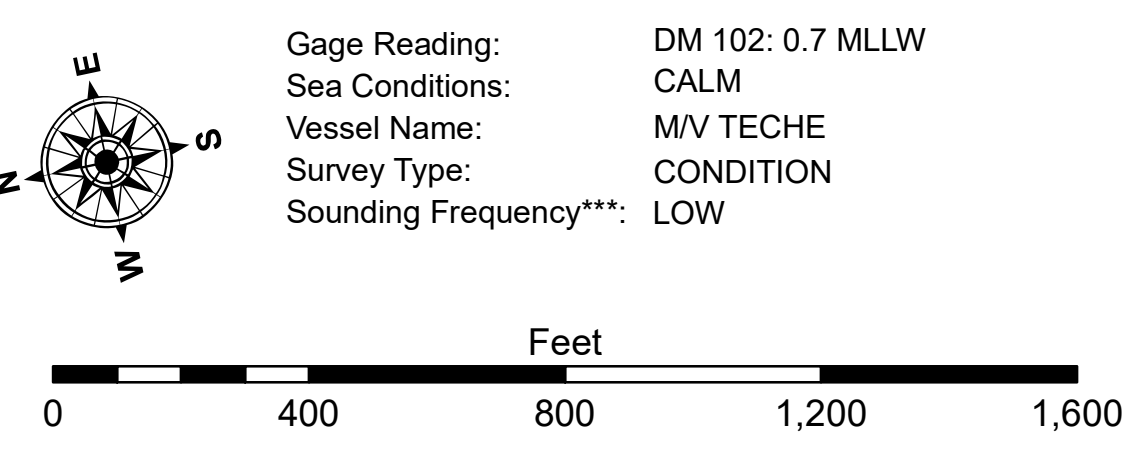
U.S. ARMY CORPS OF ENGINEERS NEW ORLEANS DISTRICT		
Submitted:	Surveyed By: SP/SR	Plotted By: BD
Recommended:	Checked By: ADU/H	Checked By: ADU/H
Approved:	Chart, Waterways Maintenance Section	

**CALCASIEU SHIP CHANNEL
 UPPER SHEET 7
 CR_07_UPR_20221205_CS
 05 December 2022**

**Sheet Reference Number
 7 of 53**



LEGEND		
--- Federal Navigation Channel	○ Cable Area	3 Fluff Thickness (feet)*
— Federal Navigation Center Line	□ Placement Area	● Shoalest Sounding**
— As-built Pipeline/Cable	⊗ Anchorage Area	★ Beacon, General
..... Unconfirmed Pipeline/Cable	⊗ Obstruction Point	♦ Red Navigation Buoy
— Project Depth Contour	⊗ Wrecks-Submerged	◆ Green Navigation Buoy
		■ -16' and above
		■ -16' to -21'
		■ -21' to -26'
		■ -26' to -33'
		■ -33' to -39'
		■ -39' to -41'
		■ -41' to -43'
		■ -43' and below



NOTES:
 Horizontal Coordinate System:
 North American Datum of 1983 (NAD83), projected to the State Plane Coordinate System (SPCS), Louisiana South Zone. Distance units in U.S. Survey Feet.
 Vertical Datum:
 Soundings are shown in feet and indicate depths below Mean Lower Low Water Datum (MLLW). Datum Relationships for gage 73575 as of December 2013:
 0.0 NAVD83 (OPUS 2013) = 0.8' MLLW = 1.8' MLG or 0.0' MLLW = 1.0' MLG
 Distances on the Calcasieu River are shown at 1 mile intervals.
 The location of navigation aids are base on and provided by the U.S. Coast Guard and USACE survey crews.
 2022 Aerial Photography data source: PAR LLC
 Reference is N.O.A. Navigation Chart No. 11339.
 * Difference between high and low frequency elevations where greater than 1.0'.
 ** Shoalest Sounding per Quarter per Reach.
 *** High frequency (200 kHz) survey data represents the first signal return at a sounding location and will include suspended solids, known as "fluff", if present. Low frequency (20 kHz) survey data normally penetrates through this "fluff" layer to depict elevations of consolidated bottom material. Low frequency accuracies may vary depending on channel conditions and fathometer settings.