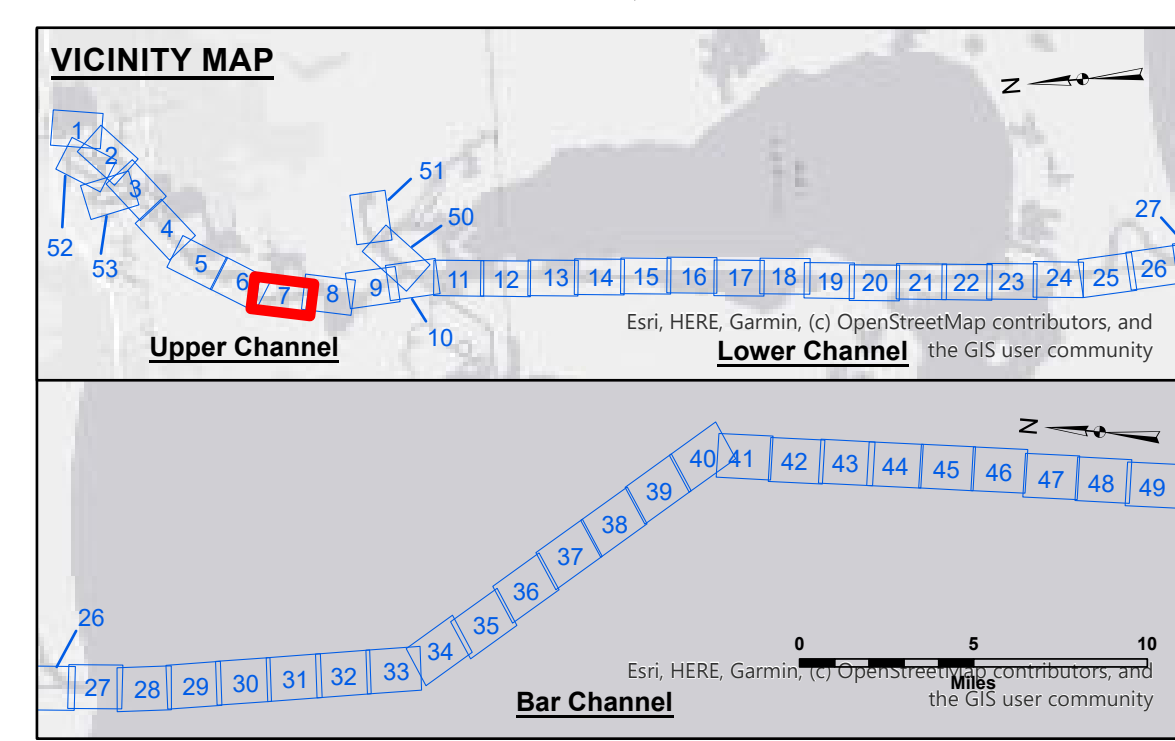
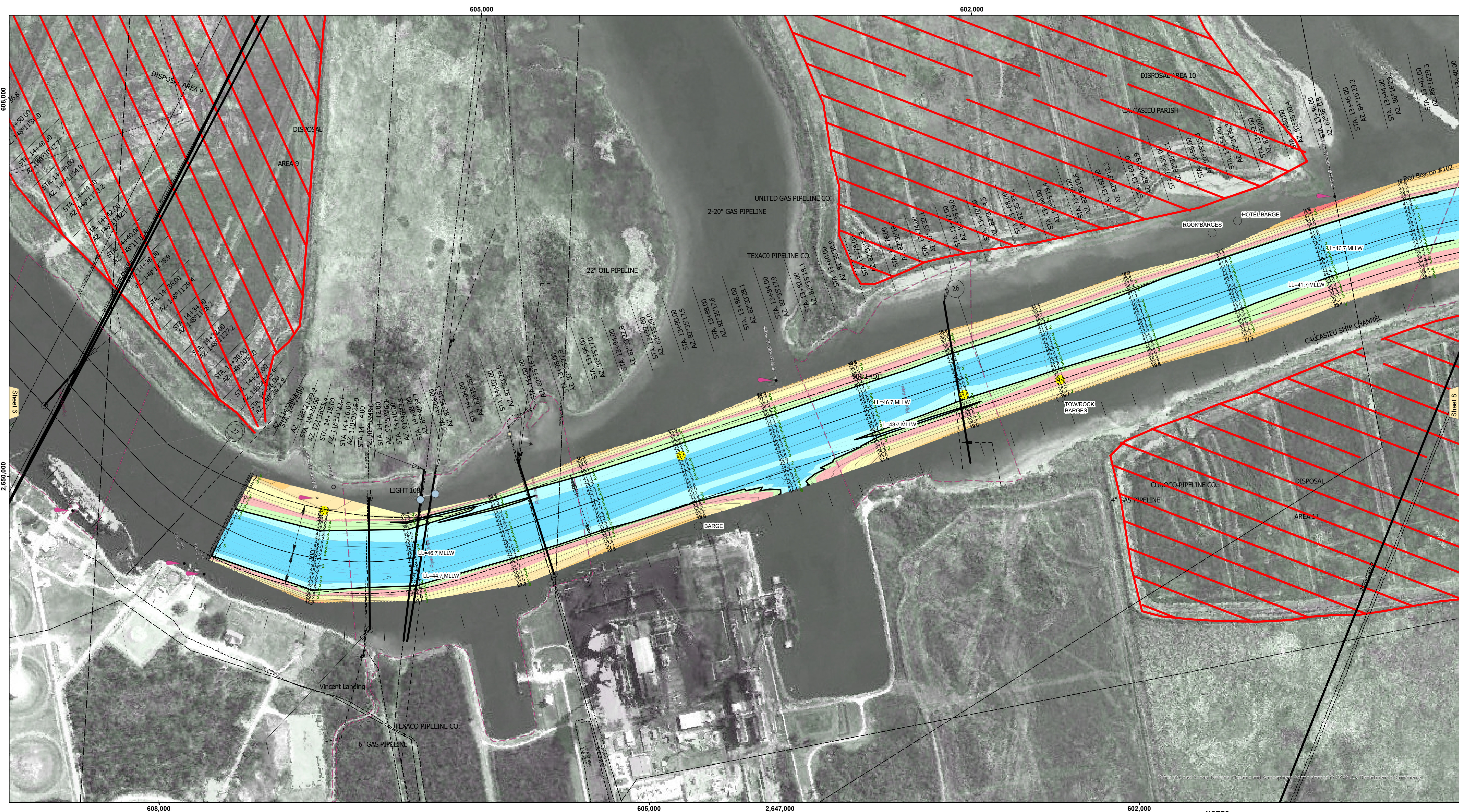


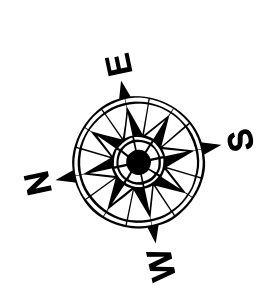


US Army Corps of Engineers District: CEMVN

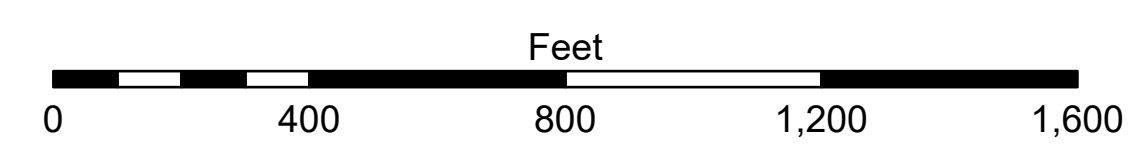
Disclaimer: The data represents the results of data collection/processing for a specific US Army Corps of Engineers activity and indicates the general existing conditions. As such, the user is responsible for the results and accuracy of any of the application of the data for other than its intended purpose. This data is not intended to be used for navigation purposes. The user is responsible for the results and accuracy of any of the application of the data for other than its intended purpose. This data is not intended to be used for navigation purposes. The user is responsible for the results and accuracy of any of the application of the data for other than its intended purpose.



LEGEND	
--- Federal Navigation Channel	○ Cable Area
— Federal Navigation Center Line	□ Placement Area
— As-built Pipeline/Cable	⊗ Anchorage Area
..... Unconfirmed Pipeline/Cable	⊗ Obstruction Point
— Project Depth Contour	⊗ Wrecks-Submerged
3 Fluff Thickness (feet)*	★ Beacon, General
● Shoalest Sounding**	◆ Red Navigation Buoy
★ Beacon, General	◆ Green Navigation Buoy
◆ Red Navigation Buoy	■ -16' and above
◆ Green Navigation Buoy	■ -16' to -21'
	■ -21' to -26'
	■ -26' to -33'
	■ -33' to -39'
	■ -39' to -41'
	■ -41' to -43'
	■ -43' and below



Gage Reading: DM 102 VRN: 1.34 MLLW AVG.
 Sea Conditions: CALM
 Vessel Name: M/V TECHE
 Survey Type: CONDITION
 Sounding Frequency***: LOW



NOTES:
 Horizontal Coordinate System: North American Datum of 1983 (NAD83), projected to the State Plane Coordinate System (SPCS), Louisiana South Zone. Distance units in U.S. Survey Feet.
 Vertical Datum: Soundings are shown in feet and indicate depths below Mean Lower Low Water Datum (MLLW). Datum Relationships for gage 73575 as of December 2013: 0.0' NAVD83 (OPUS 2013) = 0.8' MLLW = 1.8' MLG or 0.0' MLLW = 1.0' MLG
 Distances on the Calcasieu River are shown at 1 mile intervals.
 The location of navigation aids are base on and provided by the U.S. Coast Guard and USACE survey crews.
 2022 Aerial Photography data source: PAR LLC
 Reference is N.O.A. Navigation Chart No. 11339.
 * Difference between high and low frequency elevations where greater than 1.0'.
 ** Shoalest Sounding per Quarter per Reach.
 *** High frequency (200 kHz) survey data represents the first signal return at a sounding location and will include suspended solids, known as "fluff", if present. Low frequency (20 kHz) survey data normally penetrates through this "fluff" layer to depict elevations of consolidated bottom material. Low frequency accuracies may vary depending on channel conditions and fathometer settings.

U.S. ARMY CORPS OF ENGINEERS	
Submitted: _____	Surveyed By: SPJS
Recommended: Chief, Survey Section	Plotted By: BID
Approved: _____	Checked By: AO/JH

CALCASIEU SHIP CHANNEL UPPER SHEET 7
CR_07_UPR_20250528_CS
28 May 2025

Sheet Reference Number 7 of 53