

Distribution Liability: The data represents the results of data collection/processing for a specific US Army Corps of Engineers project. It is only valid for its intended use, content, time and accuracy specifications. The user is responsible for the results. The user's use of the data for other than its intended purpose is at their own risk. The user's use of the data for other than its intended purpose is at their own risk. The user's use of the data for other than its intended purpose is at their own risk.

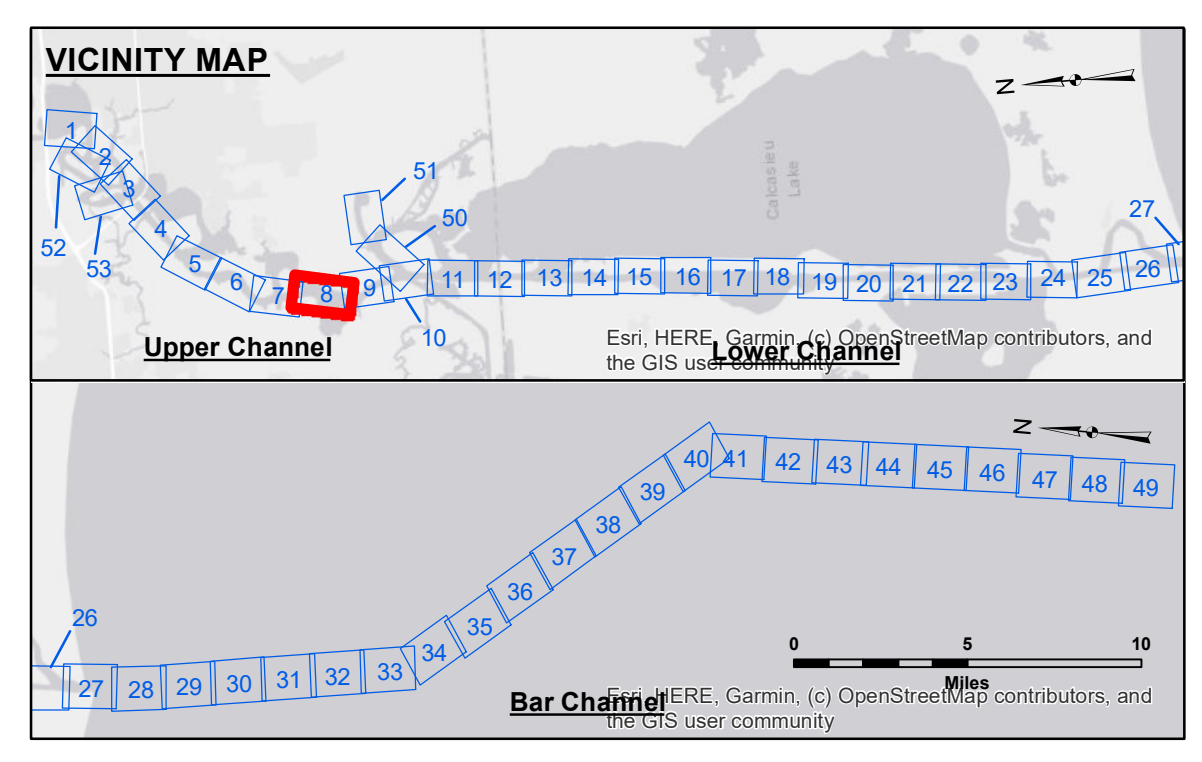
Data Constraints: Hydrographic survey data is subject to change rapidly due to several factors including but not limited to changing bathymetry, sedimentation, and other factors. The user is responsible for the results of the data. The user's use of the data for other than its intended purpose is at their own risk. The user's use of the data for other than its intended purpose is at their own risk.

Disclaimer: The information depicted on this map represents the results of a survey. The user is responsible for the results of the data. The user's use of the data for other than its intended purpose is at their own risk. The user's use of the data for other than its intended purpose is at their own risk.

Submitted:	Surveyed By: SP-JS
Recommended:	Plotted By: JH
Checked:	Checked By: JH
Approved:	Checked: Waterways Maintenance Section

U.S. ARMY CORPS OF ENGINEERS
NEW ORLEANS DISTRICT

**CALCASIEU SHIP CHANNEL
UPPER SHEET 8
CR_08_UPR_20240827_CS
27 August 2024**



LEGEND			
--- Federal Navigation Channel	○ Cable Area	3 Fluff Thickness (feet)*	-16' and above
— Federal Navigation Center Line	□ Placement Area	● Shoalest Sounding**	-16' to -21'
— As-built Pipeline/Cable	□ Anchorage Area	★ Beacon, General	-21' to -26'
..... Unconfirmed Pipeline/Cable	⊗ Obstruction Point	◆ Red Navigation Buoy	-26' to -33'
— Project Depth Contour	✈ Wrecks-Submerged	◆ Green Navigation Buoy	-33' to -39'
			-39' to -41'
			-41' to -43'
			-43' and below

Gage Reading: DM 102 VRN: 1.73 MLLW AVG
 Sea Conditions: CALM
 Vessel Name: M/V TECHE
 Survey Type: CONDITION
 Sounding Frequency***: LOW

Scale: 0 to 1,600 Feet

NOTES:
 Horizontal Coordinate System: North American Datum of 1983 (NAD83), projected to the State Plane Coordinate System (SPCS), Louisiana South Zone. Distance units in U.S. Survey Feet.
 Vertical Datum: Soundings are shown in feet and indicate depths below Mean Lower Low Water Datum (MLLW). Datum Relationships for gage 73575 as of December 2013: 0.0' NAVD83 (OPUS 2013) = 0.8' MLLW = 1.8' MLG or 0.0' MLLW = 1.0' MLG
 Distances on the Calcasieu River are shown at 1 mile intervals.
 The location of navigation aids are based on and provided by the U.S. Coast Guard and USACE survey crews.
 2022 Aerial Photography data source: PAR LLC
 Reference is N.O.A. Navigation Chart No. 11339.
 * Difference between high and low frequency elevations where greater than 1.0'.
 ** Shoalest Sounding per Quarter per Reach.
 *** High frequency (200 kHz) survey data represents the first signal return at a sounding location and will include suspended solids, known as "fluff", if present. Low frequency (20 kHz) survey data normally penetrates through this "fluff" layer to depict elevations of consolidated bottom material. Low frequency accuracies may vary depending on channel conditions and fathometer settings.

**Sheet Reference Number
8 of 53**

Revision Number:
4-2-2024(04/24)