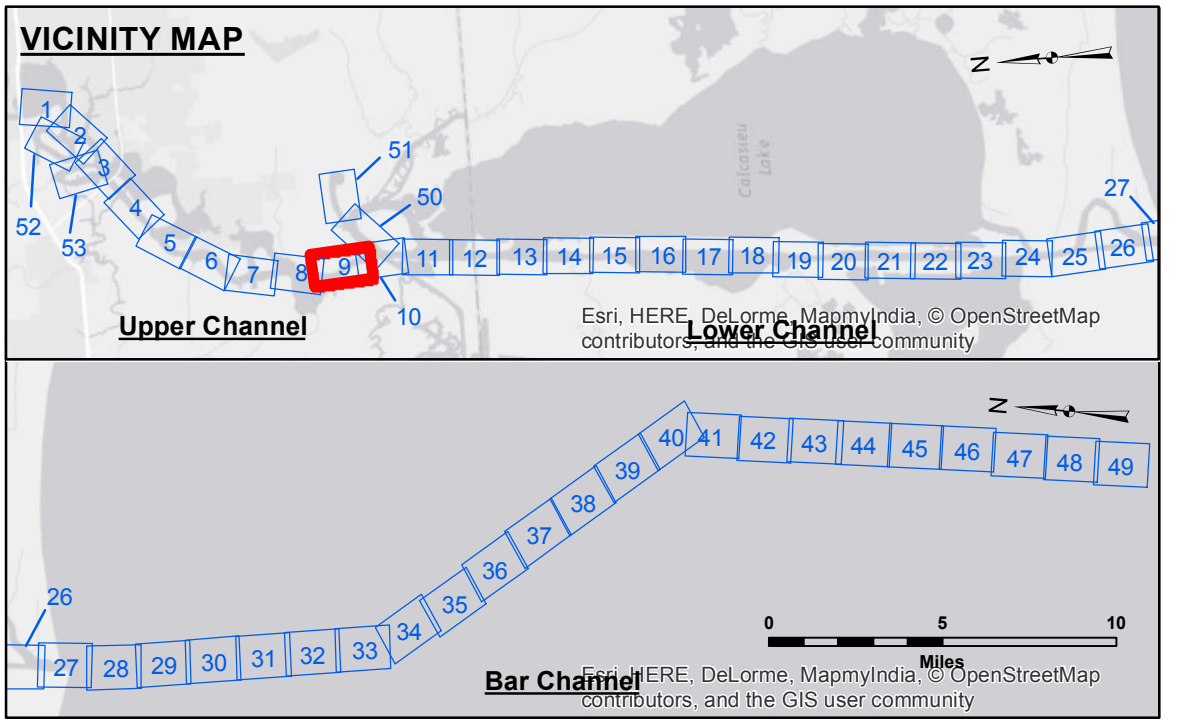


DISCLAIMER
 The information depicted on this map represents the results of a hydrographic survey conducted by the U.S. Army Corps of Engineers. The data represents the results of data collection and processing for a specific US Army Corps of Engineers project. It is not intended for use in any other project, and its use for any other purpose is at the user's risk. The user is responsible for the accuracy, completeness, timeliness, usability, or suitability of the data for any particular purpose of the user. The user is responsible for the accuracy, completeness, timeliness, usability, or suitability of the data for any particular purpose of the user. The user is responsible for the accuracy, completeness, timeliness, usability, or suitability of the data for any particular purpose of the user. The user is responsible for the accuracy, completeness, timeliness, usability, or suitability of the data for any particular purpose of the user.

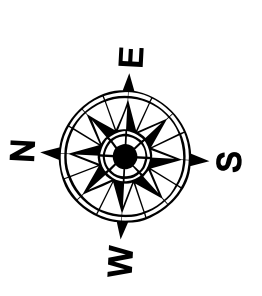
U.S. ARMY CORPS OF ENGINEERS NEW ORLEANS DISTRICT	
Submitted:	Surveyed By: SPS,jdh
Recommended:	Plotted By: BTD
Approved:	Checked By: TAF

CALCASIEU SHIP CHANNEL
UPPER SHEET 9
CR_09_UPR_20150713
13 July 2015



LEGEND

--- Federal Navigation Channel	○ Cable Area	□ Borrow Area	■ -15' and above
— Federal Navigation Center Line	□ Placement Area	● Shoalest Sounding**	■ -15' to -20'
— As-built Pipeline/Cable	□ Anchorage Area	★ Beacon, General	■ -20' to -25'
..... Unconfirmed Pipeline/Cable	⊗ Obstruction Point	◆ Red Navigation Buoy	■ -25' to -32'
— Project Depth Contour	⚓ Wrecks-Submerged	◆ Green Navigation Buoy	■ -32' to -38'
			■ -38' to -40'
			■ -40' to -42'
			■ -42' and below



Gage Reading: RANGE E: 2.3 MLG
 Sea Conditions: CALM
 Vessel Name: MV TECHE
 Survey Type: CONDITION
 Sounding Frequency***: LOW

0 400 800 1,200 1,600
 Feet

NOTES:
 Horizontal Coordinate System: North American Datum of 1983 (NAD83), projected to the State Plane Coordinate System (SPCS), Louisiana South Zone. Distance units in U.S. Survey Feet.
 Vertical Datum: Soundings are shown in feet and indicate depths below Mean Low Gull Datum (MLG). Datum Relationships for gage 73575 as of December 2013: 0.0' NAVD83 (OPUS 2013) = 0.8' MLLW = 1.8' MLG or 0.0' MLLW = 1.0' MLG
 Distances on the Calcasieu River are shown at 1 mile intervals.
 The location of navigation aids are base on and provided by the U.S. Coast Guard and USACE survey crews.
 2010 Aerial Photography data source: NAIP
 Reference is N.O.A.A. Navigation Chart No. 11339.
 ** Shoalest Sounding per Quarter per Reach.
 *** High frequency (200 kHz) survey data represents the first signal return at a sounding location and will include suspended solids, known as "fluff", if present. Low frequency (20 kHz) survey data normally penetrates through this "fluff" layer to depict elevations of consolidated bottom material. Low frequency accuracies may vary depending on channel conditions and fathometer settings.

Sheet Reference Number
9 of 53