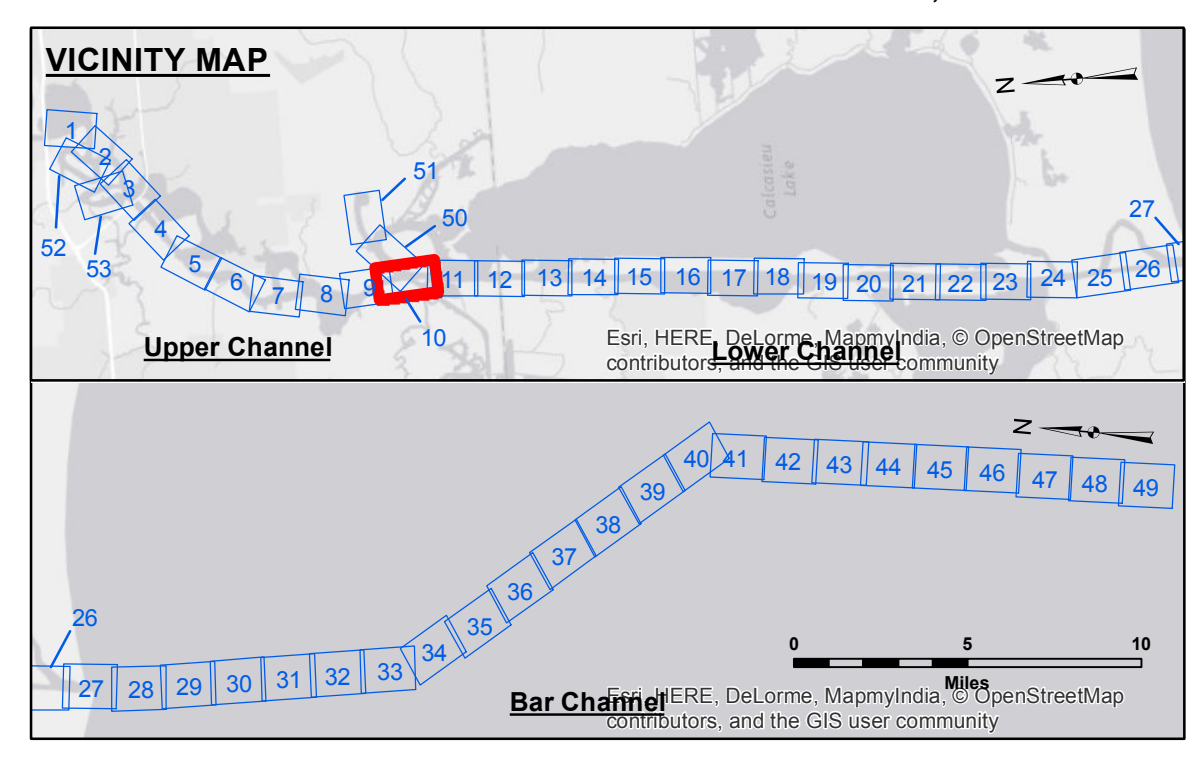


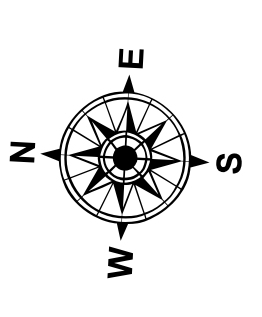
**DISCLAIMER**  
 The information depicted on this map represents the results of a survey conducted by the United States Government and is not to be used for any purpose other than that for which it was prepared. The user is responsible for the results of any use of this information. The user is responsible for the results of any use of this information. The user is responsible for the results of any use of this information. The user is responsible for the results of any use of this information.

**ACCESS LIMITS**  
 The United States Government furnishes these data and the recipient accepts and uses them with the express understanding that they are not to be used for any purpose other than that for which they were prepared. The user is responsible for the results of any use of this information. The user is responsible for the results of any use of this information. The user is responsible for the results of any use of this information.

U.S. ARMY CORPS OF ENGINEERS NEW ORLEANS DISTRICT		
Submitted:	Surveyed By: SPS JH	Plotted By: BTD
Recommended:	Checked By: TAF	Checked By: TAF
Approved:	Chart, Waterways Maintenance Section	



LEGEND		Color Key	
--- Federal Navigation Channel	○ Cable Area	Red	-15' and above
— Federal Navigation Center Line	□ Placement Area	Orange	-15' to -20'
— As-built Pipeline/Cable	○ Shoalest Sounding**	Yellow	-20' to -25'
..... Unconfirmed Pipeline/Cable	□ Anchorage Area	Light Green	-25' to -32'
— Project Depth Contour	⊗ Obstruction Point	Green	-32' to -38'
	★ Beacon, General	Light Blue	-38' to -40'
	◆ Red Navigation Buoy	Blue	-40' to -42'
	◆ Green Navigation Buoy	Dark Blue	-42' and below



Gage Reading: RANGE D: 3.30 MLG  
 Sea Conditions: CALM  
 Vessel Name: MV TECHE  
 Survey Type: CONDITION  
 Sounding Frequency\*\*\*: LOW

Vertical Datum:  
 Soundings are shown in feet and indicate depths below Mean Low Gulf Datum (MLG).  
 Datum Relationships for gage 73985 as of December 2013:  
 0.0' NAVD83 (OPUS 2013) = 0.8' MLLW = 1.8' MLG or 0.0' MLLW = 1.0' MLG

Distances on the Calcasieu River are shown at 1 mile intervals.

The location of navigation aids are based on and provided by the U.S. Coast Guard and USACE survey crews.

2010 Aerial Photography data source: NAIP  
 Reference is N.O.A. Navigation Chart No. 11339.  
 \*\* Shoalest Sounding per Quarter per Reach.  
 \*\*\* High frequency (200 kHz) survey data represents the first signal return at a sounding location and will include suspended solids, known as "fluff", if present. Low frequency (20 kHz) survey data normally penetrates through this "fluff" layer to depict elevations of consolidated bottom material. Low frequency accuracies may vary depending on channel conditions and fathometer settings.

**CALCASIEU SHIP CHANNEL  
 UPPER SHEET 10  
 CR\_10\_UPR\_20160609  
 09 June 2016**

**Sheet Reference Number  
 10 of 53**