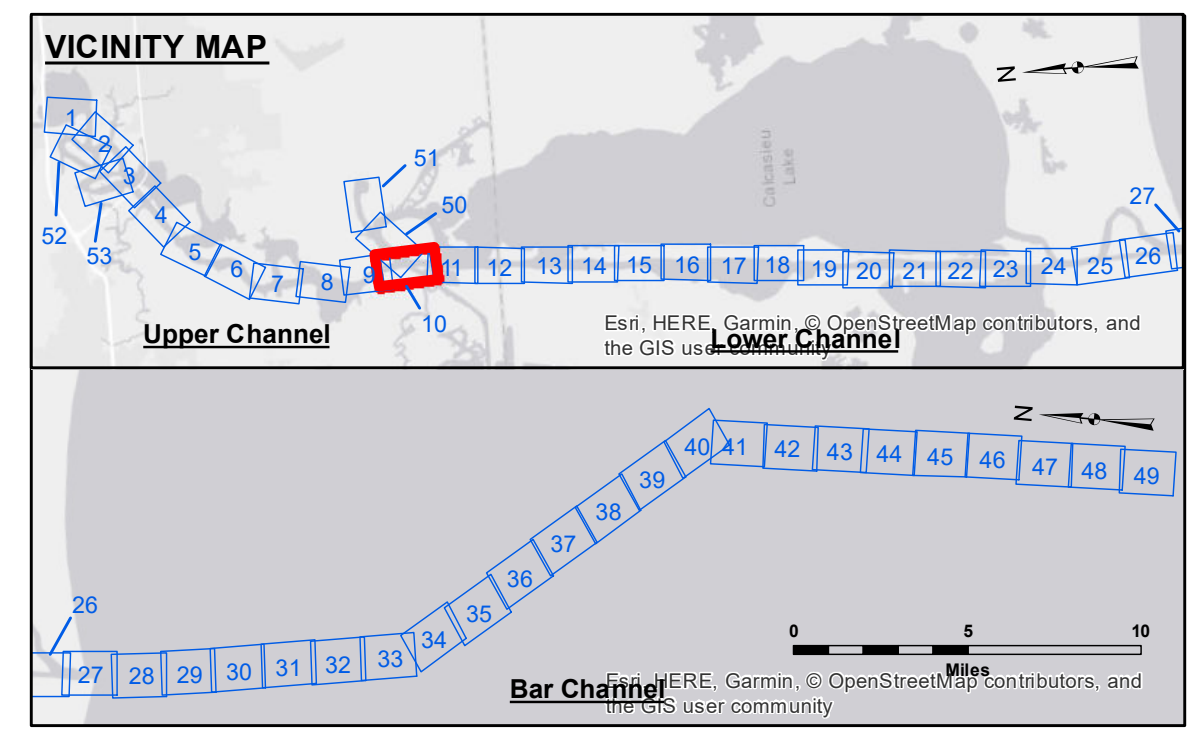


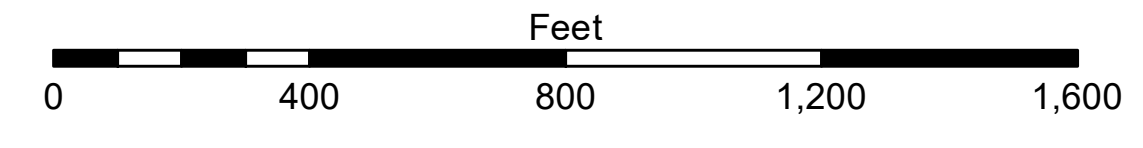
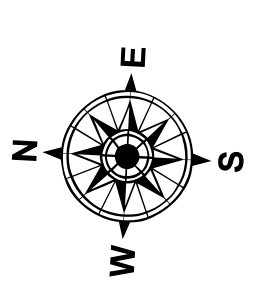
**DISCLAIMER**  
 The information depicted on this map represents the results of a survey conducted by the U.S. Army Corps of Engineers. The user is responsible for the accuracy, completeness, and reliability of the data for its intended use. The user is responsible for the accuracy, completeness, and reliability of the data for its intended use. The user is responsible for the accuracy, completeness, and reliability of the data for its intended use. The user is responsible for the accuracy, completeness, and reliability of the data for its intended use.

Submitted:	Surveyed By:	Plotted By:	Checked By:
	SPS:JH	BD	AC
Recommended:	Chart:	Survey Section:	
Approved:	Chief, Waterways Maintenance Section		

**CALCASIEU SHIP CHANNEL**  
**UPPER SHEET 10**  
**CR\_10\_UPR\_20180430\_CS**  
**30 April 2018**



LEGEND		Color Key	
--- Federal Navigation Channel	○ Cable Area	Red	-16' and above
— Federal Navigation Center Line	□ Placement Area	Orange	-16' to -21'
— As-built Pipeline/Cable	□ Anchorage Area	Yellow	-21' to -26'
..... Unconfirmed Pipeline/Cable	⊗ Obstruction Point	Light Green	-26' to -33'
— Project Depth Contour	⊗ Wrecks-Submerged	Light Blue	-33' to -39'
	★ Beacon, General	Light Green	-39' to -41'
	◆ Red Navigation Buoy	Light Blue	-41' to -43'
	◆ Green Navigation Buoy	Light Blue	-43' and below
	3 Fluff Thickness (feet)*		
	● Shoalest Sounding**		



Gage Reading: RANGE D: 1.02 MLLW  
 Sea Conditions: 1'  
 Vessel Name: M/V LAFOURCHE  
 Survey Type: CONDITION  
 Sounding Frequency\*\*\*: LOW

**NOTES:**  
 Horizontal Coordinate System: North American Datum of 1983 (NAD83), projected to the State Plane Coordinate System (SPCS), Louisiana South Zone. Distance units in U.S. Survey Feet.  
 Vertical Datum: Soundings are shown in feet and indicate depths below Mean Lower Low Water Datum (MLLW). Datum Relationships for gage 73585 as of December 2013: 0.0' NAVD83 (OPUS 2013) = 0.8' MLLW = 1.8' MLG or 0.0' MLLW = 1.0' MLG  
 Distances on the Calcasieu River are shown at 1 mile intervals.  
 The location of navigation aids are base on and provided by the U.S. Coast Guard and USACE survey crews.  
 2015 Aerial Photography data source: NAIP  
 Reference is N.O.A. Navigation Chart No. 11339.  
 \* Difference between high and low frequency elevations where greater than 1.0'.  
 \*\* Shoalest Sounding per Quarter per Reach.  
 \*\*\* High frequency (200 kHz) survey data represents the first signal return at a sounding location and will include suspended solids, known as "fluff", if present. Low frequency (20 kHz) survey data normally penetrates through this "fluff" layer to depict elevations of consolidated bottom material. Low frequency accuracies may vary depending on channel conditions and fathometer settings.

**Sheet Reference Number**  
**10 of 53**