

US Army Corps of Engineers District: CEMVN

NOTES:

The data represents the results of data collection for a specific US Army Corps of Engineers project. It is only valid for the intended use, content, time and accuracy specifications. The user is responsible for the results. The user must verify the data for other than its intended purpose.

Data Constraints: Hydrographic survey data is subject to change due to several factors including but not limited to changing hydrographic conditions which develop after the date of the survey. The user must verify the data for other than its intended purpose.

The information depicted on this map represents the results of a survey conducted on or about the date shown. It is not intended to represent the general condition existing at that time.

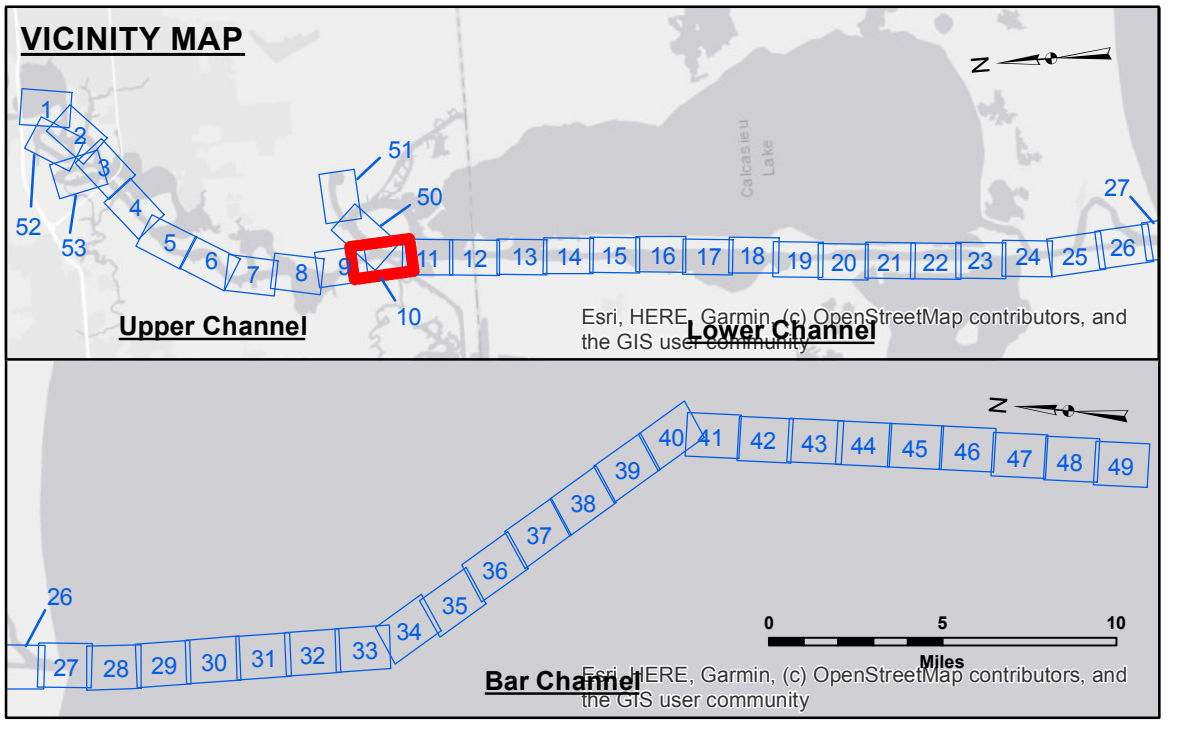
ACCESS: The United States Government furnishes these data and the recipient accepts and uses them with the express understanding that the data are not to be used for any purpose other than that for which they were collected, and that the user assumes all liability for any use of the data, whether or not such use is made in connection with a project of the United States Government. The recipient may not transfer these data to others without obtaining the permission of the United States Government.

U.S. ARMY CORPS OF ENGINEERS NEW ORLEANS DISTRICT		
Submitted:	Surveyed By: RYLAND/MOLLERE	Plotted By: BD
Recommended:	Checked By: AC	Checked By: AC
Approved:	Chief, Waterways Maintenance Section	

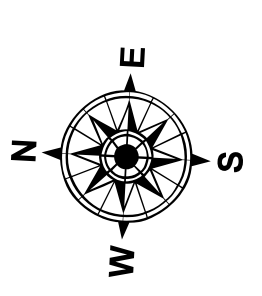
**CALCASIEU SHIP CHANNEL
UPPER SHEET 10
CR_10_UPR_20210616_CS
16 June 2021**

**Sheet Reference Number
10 of 53**

Revision Number:
4.1-2019115



LEGEND		SOUNDING	
--- Federal Navigation Channel	○ Cable Area	3 Fluff Thickness (feet)*	-16' and above
— Federal Navigation Center Line	□ Placement Area	● Shoalest Sounding**	-16' to -21'
— As-built Pipeline/Cable	□ Anchorage Area	★ Beacon, General	-21' to -26'
..... Unconfirmed Pipeline/Cable	⊗ Obstruction Point	◆ Red Navigation Buoy	-26' to -33'
— Project Depth Contour	⚓ Wrecks-Submerged	◆ Green Navigation Buoy	-33' to -39'
			-39' to -41'
			-41' to -43'
			-43' and below



Gage Reading: DM 92: 2.05 MLLW
 Sea Conditions: CALM
 Vessel Name: OB-169
 Survey Type: CONDITION
 Sounding Frequency***: LOW

Vertical Datum:
 Soundings are shown in feet and indicate depths below Mean Lower Low Water Datum (MLLW).
 Datum Relationships for gage 73585 as of December 2013:
 0.0' NAVD83 (OPUS 2013) = 0.8' MLLW = 1.8' MLG or 0.0' MLLW = 1.0' MLG

Distances on the Calcasieu River are shown at 1 mile intervals.

The location of navigation aids are based on and provided by the U.S. Coast Guard and USACE survey crews.

2015 Aerial Photography data source: NAIP
 Reference is N.O.A.A. Navigation Chart No. 11339.

* Difference between high and low frequency elevations where greater than 1.0'.
 ** Shoalest Sounding per Quarter per Reach.
 *** High frequency (200 kHz) survey data represents the first signal return at a sounding location and will include suspended solids, known as "fluff", if present. Low frequency (20 kHz) survey data normally penetrates through this "fluff" layer to depict elevations of consolidated bottom material. Low frequency accuracies may vary depending on channel conditions and fathometer settings.

