

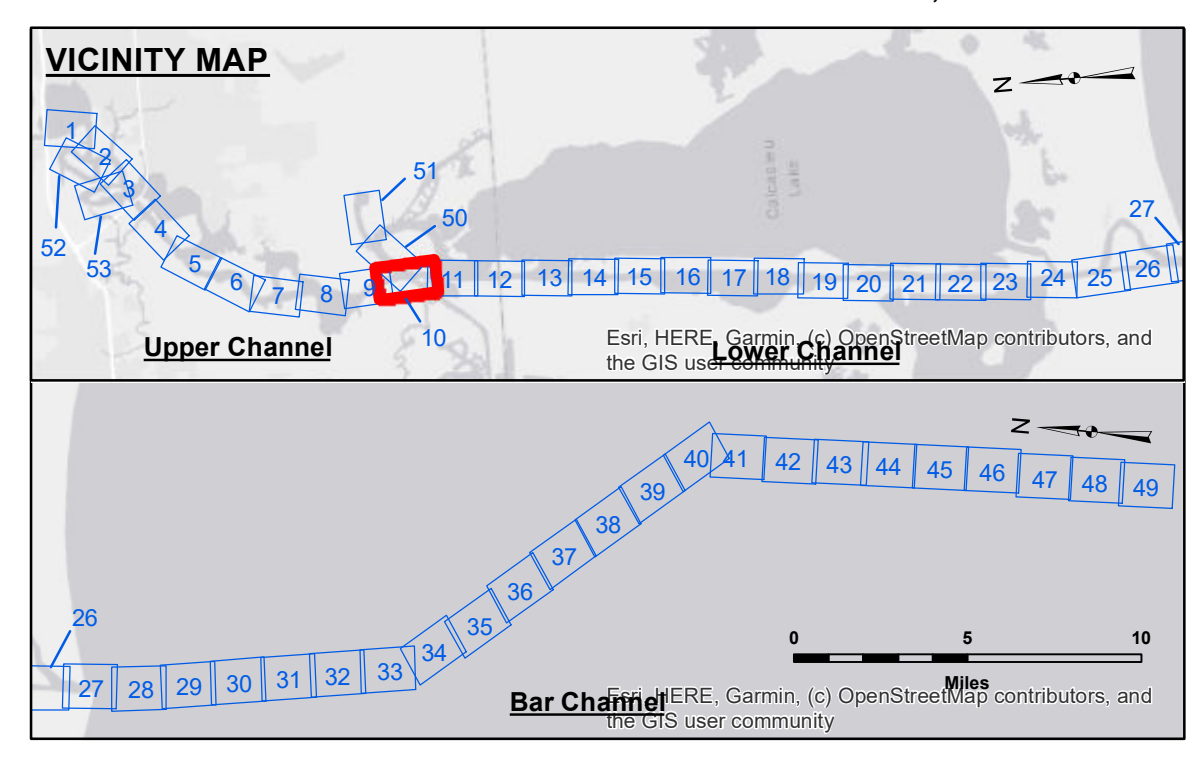
**DISCLAIMER**  
 The United States Government furnishes these data and the recipient accepts and uses them with the express understanding that they are not to be used for any purpose other than that for which they were prepared. The user is responsible for the results of any use of these data. The Corps of Engineers does not accept responsibility for changes in the hydrographic conditions which develop after the date of the survey. The Corps of Engineers does not warrant the accuracy of the data for other than the intended purpose. Data Constants: Hydrographic survey data is subject to change. The Corps of Engineers does not accept responsibility for changes in the hydrographic conditions which develop after the date of the survey. The Corps of Engineers does not warrant the accuracy of the data for other than the intended purpose. The information depicted on this map represents the results of a survey conducted on or about the date of the survey. It is not to be used for any purpose other than that for which it was prepared. The user is responsible for the results of any use of these data. The Corps of Engineers does not accept responsibility for changes in the hydrographic conditions which develop after the date of the survey. The Corps of Engineers does not warrant the accuracy of the data for other than the intended purpose.

U.S. ARMY CORPS OF ENGINEERS NEW ORLEANS DISTRICT	
Submitted:	Surveyed By: SPPS
Recommended:	Plotted By: AO
Approved:	Checked By: AC

**CALCASIEU SHIP CHANNEL  
 UPPER SHEET 10  
 CR\_10\_UPR\_20220110\_CS  
 10 January 2022**

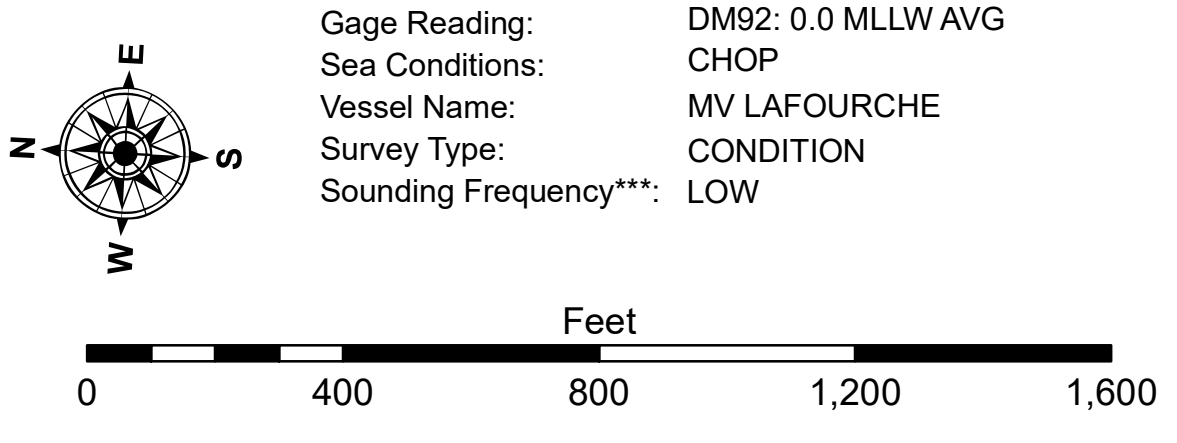
**Sheet Reference Number  
 10 of 53**

Revision Number:  
 4-2-2020/04/20



**LEGEND**

--- Federal Navigation Channel	○ Cable Area	3 Fluff Thickness (feet)*	■ -16' and above
— Federal Navigation Center Line	□ Placement Area	● Shoalest Sounding**	■ -16' to -21'
— As-built Pipeline/Cable	⊗ Anchorage Area	☆ Beacon, General	■ -21' to -26'
..... Unconfirmed Pipeline/Cable	⊗ Obstruction Point	◆ Red Navigation Buoy	■ -26' to -33'
— Project Depth Contour	⊗ Wrecks-Submerged	◆ Green Navigation Buoy	■ -33' to -39'
			■ -39' to -41'
			■ -41' to -43'
			■ -43' and below



**NOTES:**  
 Horizontal Coordinate System:  
 North American Datum of 1983 (NAD83), projected to the State Plane Coordinate System (SPCS), Louisiana South Zone. Distance units in U.S. Survey Feet.  
 Vertical Datum:  
 Soundings are shown in feet and indicate depths below Mean Lower Low Water Datum (MLLW).  
 Datum Relationships for gage 73585 as of December 2013:  
 0.0' NAVD83 (OPUS 2013) = 0.8' MLLW = 1.8' MLG or 0.0' MLLW = 1.0' MLG  
 Distances on the Calcasieu River are shown at 1 mile intervals.  
 The location of navigation aids are base on and provided by the U.S. Coast Guard and USACE survey crews.  
 2015 Aerial Photography data source: NAIP  
 Reference is N.O.A. Navigation Chart No. 11339.  
 \* Difference between high and low frequency elevations where greater than 1.0'.  
 \*\* Shoalest Sounding per Quarter per Reach.  
 \*\*\* High frequency (200 kHz) survey data represents the first signal return at a sounding location and will include suspended solids, known as "fluff", if present. Low frequency (20 kHz) survey data normally penetrates through this "fluff" layer to depict elevations of consolidated bottom material. Low frequency accuracies may vary depending on channel conditions and fathometer settings.