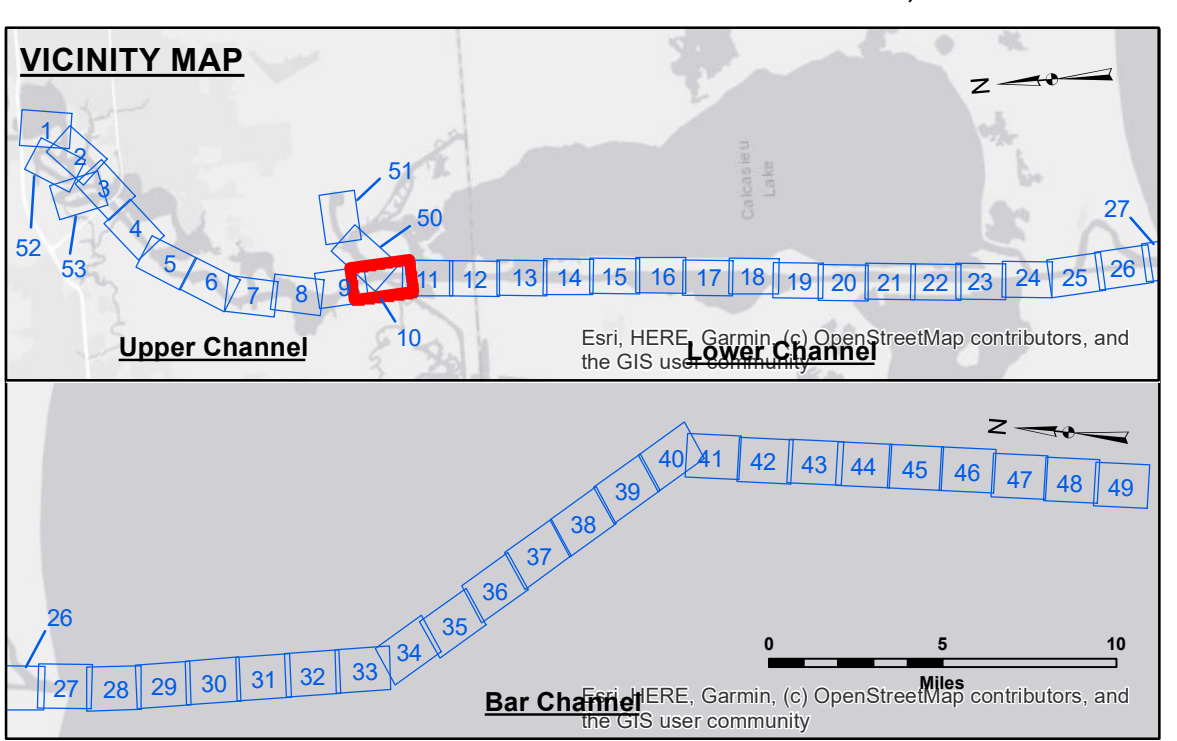


DISCLAIMER: The United States Government furnishes these data and the recipient accepts and uses them with the express understanding that the data are not warranted for accuracy, reliability, usability or suitability, or for any particular purpose and that the data are provided "AS IS" without warranty of any kind, either expressed or implied, including but not limited to the accuracy, reliability, usability or suitability, or for any particular purpose. The recipient shall be responsible for any use of the data, including any reproduction, distribution, or disclosure, in whole or in part, and shall be liable for any damages or losses resulting from such use. The information depicted on this map represents the results of a survey conducted by the Corps of Engineers and is not to be used for any purpose other than that for which it was intended. The information is provided for informational purposes only and is not to be used for any purpose other than that for which it was intended. The information is provided for informational purposes only and is not to be used for any purpose other than that for which it was intended.

U.S. ARMY CORPS OF ENGINEERS NEW ORLEANS DISTRICT			
Submitted:	Surveyed By:	Plotted By:	Checked By:
Recommended:	SP-JS	BD	AD/JH
Chart, Survey Section			
Chart, Waterways Maintenance Section			

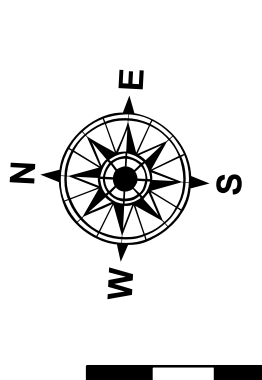
**CALCASIEU SHIP CHANNEL
UPPER SHEET 10
CR_10_UPR_20231101_CS
01 November 2023**

**Sheet Reference Number
10 of 53**



LEGEND

--- Federal Navigation Channel	○ Cable Area	3 Fluff Thickness (feet)*	-16' and above
— Federal Navigation Center Line	□ Placement Area	● Shoalest Sounding**	-16' to -21'
— As-built Pipeline/Cable	□ Anchorage Area	★ Beacon, General	-21' to -26'
..... Unconfirmed Pipeline/Cable	⊗ Obstruction Point	♦ Red Navigation Buoy	-26' to -33'
— Project Depth Contour	⚓ Wrecks-Submerged	◇ Green Navigation Buoy	-33' to -39'
			-39' to -41'
			-41' to -43'
			-43' and below



Gage Reading: DM 92 VRN: 0.86 MLLW AVG.
 Sea Conditions: CALM
 Vessel Name: MV TECHE
 Survey Type: CONDITION
 Sounding Frequency***: LOW

Vertical Datum:
 Soundings are shown in feet and indicate depths below Mean Lower Low Water Datum (MLLW).
 Datum Relationships for gage 73585 as of December 2013:
 0.0 NAVD83 (OPUS 2013) = 0.8' MLLW = 1.8' MLG or 0.0' MLLW = 1.0' MLG

Distances on the Calcasieu River are shown at 1 mile intervals.

The location of navigation aids are base on and provided by the U.S. Coast Guard and USACE survey crews.

2022 Aerial Photography data source: PAR LLC
 Reference is N.O.A.A. Navigation Chart No. 11339.
 * Difference between high and low frequency elevations where greater than 1.0'.
 ** Shoalest Sounding per Quarter per Reach.
 *** High frequency (200 kHz) survey data represents the first signal return at a sounding location and will include suspended solids, known as "fluff", if present. Low frequency (20 kHz) survey data normally penetrates through this "fluff" layer to depict elevations of consolidated bottom material. Low frequency accuracies may vary depending on channel conditions and fathometer settings.

NOTES:

Horizontal Coordinate System:
 North American Datum of 1983 (NAD83), projected to the State Plane Coordinate System (SPCS), Louisiana South Zone. Distance units in U.S. Survey Feet.

Vertical Datum:
 Soundings are shown in feet and indicate depths below Mean Lower Low Water Datum (MLLW).
 Datum Relationships for gage 73585 as of December 2013:
 0.0 NAVD83 (OPUS 2013) = 0.8' MLLW = 1.8' MLG or 0.0' MLLW = 1.0' MLG

Distances on the Calcasieu River are shown at 1 mile intervals.

The location of navigation aids are base on and provided by the U.S. Coast Guard and USACE survey crews.

2022 Aerial Photography data source: PAR LLC
 Reference is N.O.A.A. Navigation Chart No. 11339.
 * Difference between high and low frequency elevations where greater than 1.0'.
 ** Shoalest Sounding per Quarter per Reach.
 *** High frequency (200 kHz) survey data represents the first signal return at a sounding location and will include suspended solids, known as "fluff", if present. Low frequency (20 kHz) survey data normally penetrates through this "fluff" layer to depict elevations of consolidated bottom material. Low frequency accuracies may vary depending on channel conditions and fathometer settings.