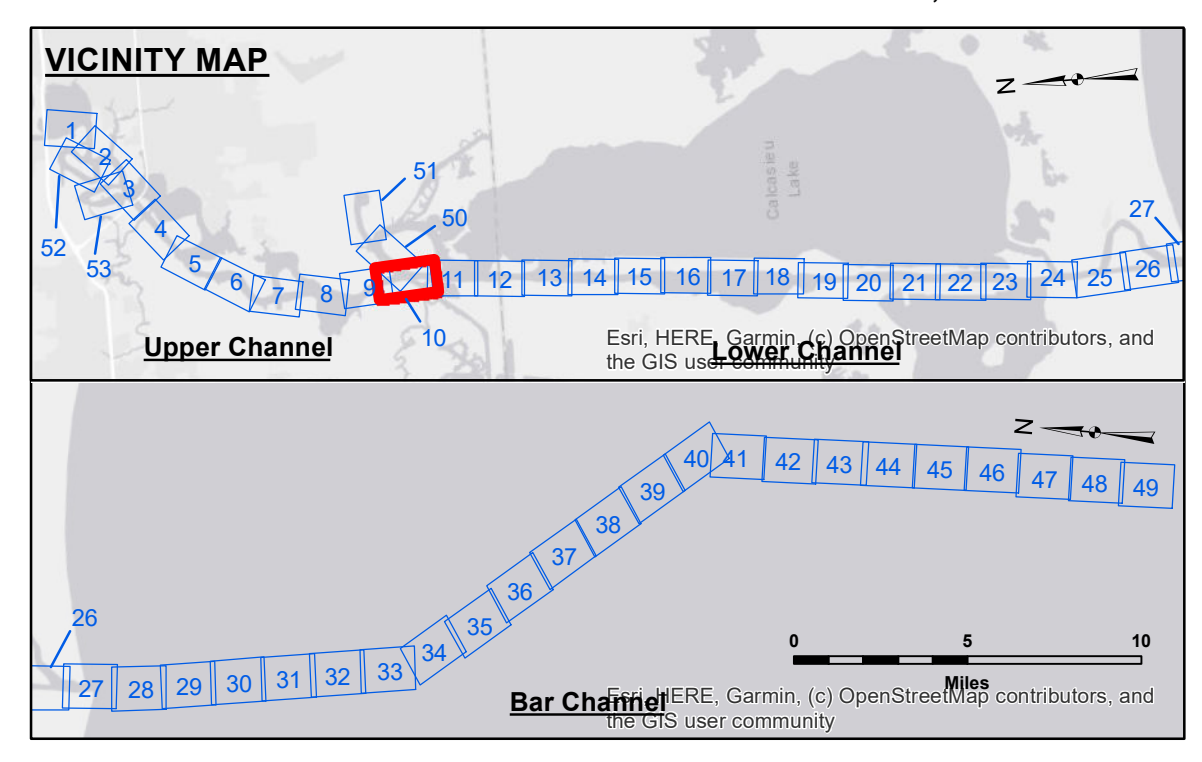


**DISTRIBUTION LIABILITY:** The data represents the results of data collection for a specific US Army Corps of Engineers project. It is only valid for its intended use, content, time and accuracy. The user is responsible for the results. The user is not to be held liable for any use of the data for other than its intended purpose. Data: Hydrographic survey data is subject to change. The user is responsible for the accuracy of the data. The user is not to be held liable for any use of the data for other than its intended purpose. The user is responsible for the accuracy of the data. The user is not to be held liable for any use of the data for other than its intended purpose.

**DISCLAIMER:** The United States Government furnishes these data and the recipient accepts and uses them with the express understanding that they are not to be used for any purpose other than that for which they were prepared. The user is responsible for the results. The user is not to be held liable for any use of the data for other than its intended purpose. The user is responsible for the accuracy of the data. The user is not to be held liable for any use of the data for other than its intended purpose.

U.S. ARMY CORPS OF ENGINEERS NEW ORLEANS DISTRICT			
Submitted:	Surveyed By: SP-JS	Plotted By: BD	Checked By: AD/JH
Recommended:	Chief, Survey Section		
Approved:	Chief, Waterways Maintenance Section		



**LEGEND**

--- Federal Navigation Channel	○ Cable Area	3 Fluff Thickness (feet)*	■ -16' and above
— Federal Navigation Center Line	□ Placement Area	● Shoalest Sounding**	■ -16' to -21'
— As-built Pipeline/Cable	⊗ Anchorage Area	★ Beacon, General	■ -21' to -26'
..... Unconfirmed Pipeline/Cable	⊗ Obstruction Point	◆ Red Navigation Buoy	■ -26' to -33'
— Project Depth Contour	⊗ Wrecks-Submerged	◆ Green Navigation Buoy	■ -33' to -39'
			■ -39' to -41'
			■ -41' to -43'
			■ -43' and below

**Gage Reading:** DM 92 VRN: 1.69 MLLW AVG.  
**Sea Conditions:** CALM  
**Vessel Name:** MV TECHE  
**Survey Type:** CONDITION  
**Sounding Frequency\*\*\*:** LOW

Scale: 0 to 1,600 Feet

**NOTES:**  
 Horizontal Coordinate System: North American Datum of 1983 (NAD83), projected to the State Plane Coordinate System (SPCS), Louisiana South Zone. Distance units in U.S. Survey Feet.  
 Vertical Datum: Soundings are shown in feet and indicate depths below Mean Lower Low Water Datum (MLLW). Datum Relationships for gage 73585 as of December 2013: 0.0' NAVD88 (OPUS 2013) = 0.8' MLLW = 1.8' MLG or 0.0' MLLW = 1.0' MLG  
 Distances on the Calcasieu River are shown at 1 mile intervals.  
 The location of navigation aids are base on and provided by the U.S. Coast Guard and USACE survey crews.  
 2022 Aerial Photography data source: PAR LLC  
 Reference is N.O.A.A. Navigation Chart No. 11339.  
 \* Difference between high and low frequency elevations where greater than 1.0'.  
 \*\* Shoalest Sounding per Quarter per Reach.  
 \*\*\* High frequency (200 kHz) survey data represents the first signal return at a sounding location and will include suspended solids, known as "fluff", if present. Low frequency (20 kHz) survey data normally penetrates through this "fluff" layer to depict elevations of consolidated bottom material. Low frequency accuracies may vary depending on channel conditions and fathometer settings.

**CALCASIEU SHIP CHANNEL  
 UPPER SHEET 10  
 CR\_10\_UPR\_20241008\_CS  
 08 October 2024**

**Sheet Reference Number  
 10 of 53**

Revision Number: 4.2-20240420